



SOLD

PRICED RIGHT > GREAT LOCATION> RURAL VIEWS>

This home is priced to sell.

The location will appeal to many home buyers. Situated on a large corner block 901m2 with rural views across the street at the park land and one can see cattle grazing in the distant paddock. This corner block has a double gated side access providing plenty of space to park a trailer or caravan.

Well fenced for the dog. Lovely large private covered in Patio facing the southern side of the back yard .

Features of the Home.

- Inviting front entrance that flows in to a large tiled open plan kitchen, dining and living area.
- Plus a separate spacious Media room.
- Functional kitchen with a pantry, wide bench tops, electric oven and gas cook top with a range hood. Breakfast bare and plenty of cupboard space.
- Master bedroom, walk in robe and generous size ensuite with shower, toilet and vanity.
- 3 additional bedrooms, carpeted with built in robes.
- Large tiled family bathroom: bath vanity and shower.
- Second separate toilet. Tiled Laundry, plenty of cupboard space.
- Very private well presented large paved entertainment area.
- Double lock up garage with shelving, work bench and internal access.
- 3 rain water tanks.
- Easy care shady garden.
- Two garden sheds side by side providing extra space for storage and another workshop.
- Split system heating and cooling in the living area.
- Solar system.
- Security screens with large windows that generate natural light throughout this home.

4 BED | 2 BATH | 2 CAR

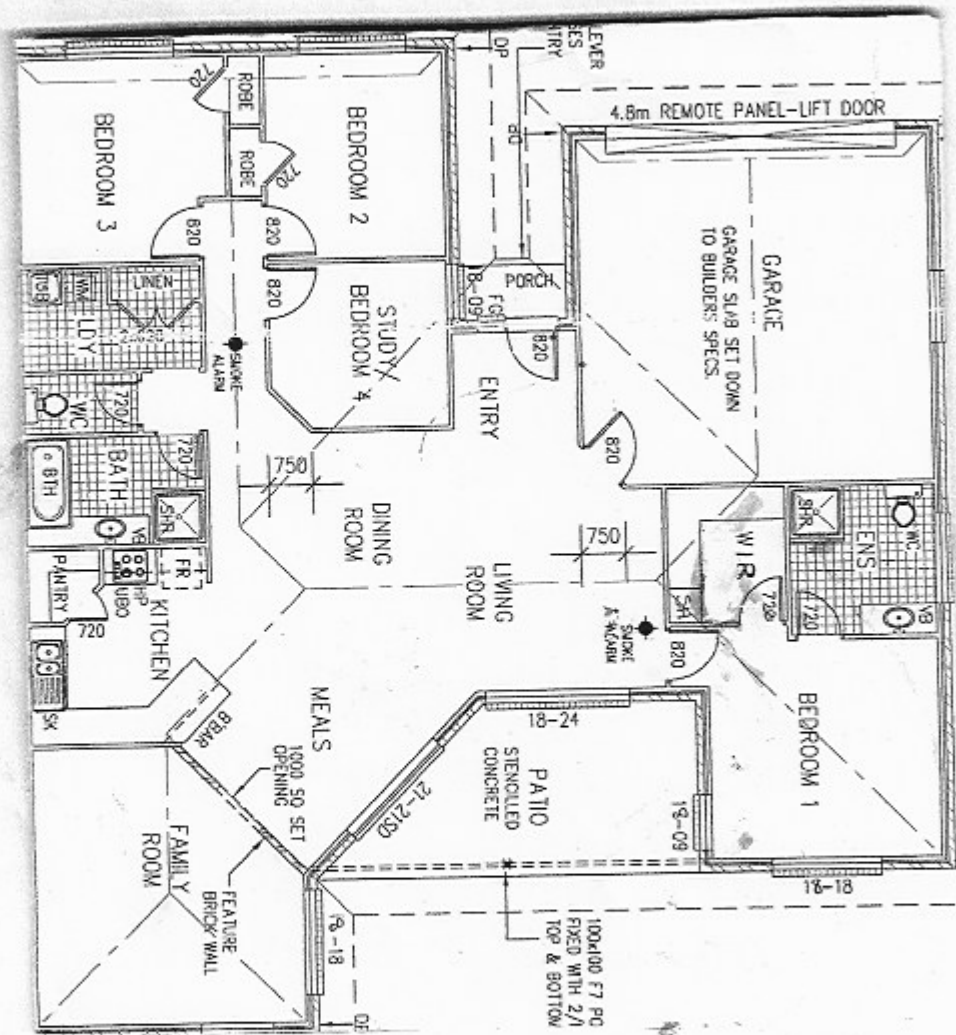
PRICE:
\$344,000

OPEN FOR INSPECTION:
N/A



Yvonne Bradley
0408181146

yvonne@atrealty.com.au
www.atrealty.com.au



Disclaimer: Please note this floor plan is for marketing purposes and is to be used as a guide only. All dimensions are estimates only and may not be exact measurements.