



SOLD

**VIEWS TO THE BROADWATER AND POOL.
PERFECT EASTERN ASPECT!!!**

FANTASTIC BALCONY – SENSATIONAL VIEWS TO THE BROADWATER - SO BIG YOU'LL LIVE OUT THERE!

- 28sqm balcony – Fully enclosed with lockable plantation shutters
- Large lockable storage cupboard
- Direct, private access onto Marine Parade and into the pool
- Fully equipped kitchen - European stainless steel appliances
- Master bedroom - walk-in robe and en-suite
- Ducted personal control air-conditioning
- 25m resort pool
- Onsite manager + 24 hour security access to building
- Rental appraisal \$500+pw
- B/C approx \$150pw (6 months - should revert to approx. \$130pw)
- Pet friendly

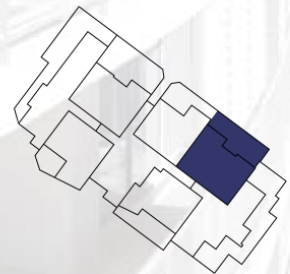
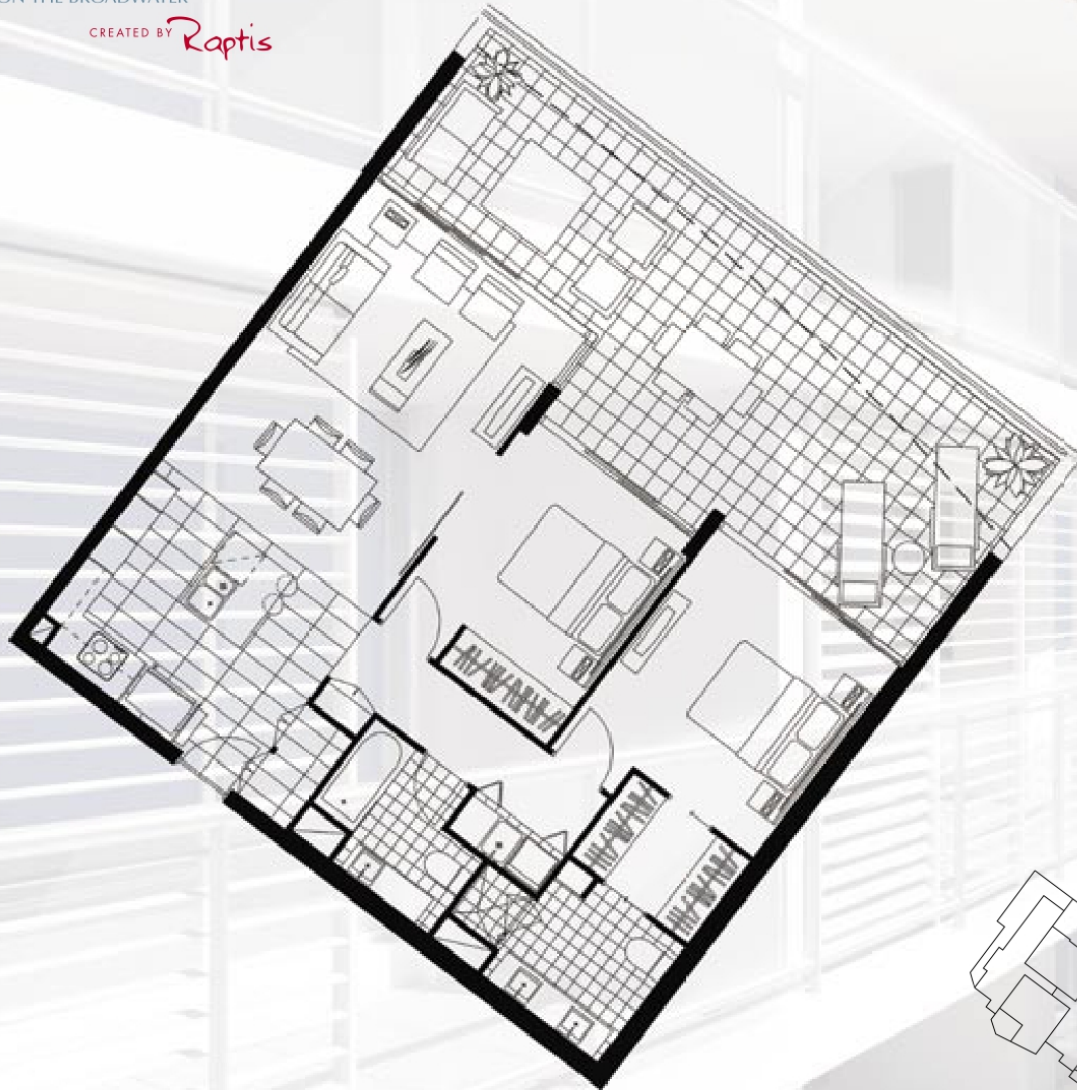
2 BED | 2 BATH | 1 CAR

PRICE:
\$530,000

OPEN FOR INSPECTION:
N/A



Francine Setchell
0408143464
francine@atrealty.com.au
www.atrealty.com.au



WATERSIDE LIVING PERFECTED

Not to scale

GROUND LEVEL APARTMENT TYPE E1

2 Bedroom 2 Bathroom | Unit 81m² Courtyard 38m² Total 119m²



Whilst every effort has been made to accurately describe the details as outlined herein, the availability of certain products and materials may result in some deviation to the above and neither the developer, the agent nor the vendor accepts responsibility for the accuracy of any information contained herein or for any action taken in reliance thereon by the purchasers. Purchasers should make their own enquiries to satisfy themselves as to all aspects of the development. The Raptis Group ABN 43 010 472 858.

dlb/FRAC/13341

Disclaimer: Please note this floor plan is for marketing purposes and is to be used as a guide only. All dimensions are estimates only and may not be exact measurements.