



SOLD

3135M2 BLOCK WITH FANTASTIC HOME & THE SHED!

Positioned on a 3135m2 Corner block in the Burpengary Meadows Estate is this Gorgeous home with plenty of living space!

The features include;

- 4 Good Size Builtin Bedrooms & Master with Walk In Robe and Ensuite
- Spacious Open Plan living and dining
- Formal Lounge
- Huge Rumpus Room with connections for a wet bar
- Well appointed Kitchen with plenty of bench and cupboard space
- Ducted Air Conditioning
- Great size outdoor entertainment area
- Ample storage
- Double Lock up Garage
- Shed with mezzanine floor, Workshop & 15amp plugs
- Water tank and Tank
- Veggie Gardens & Fruit Trees
- Fully fenced with separate access for shed
- Plenty of room for a pool

Located in one Burpengary's most sought after acreage estates and within minutes to Train, Bus, Schools and Shopping.

For further information, please do not hesitate to contact GAIL BERNARDIN on 0418 645 506

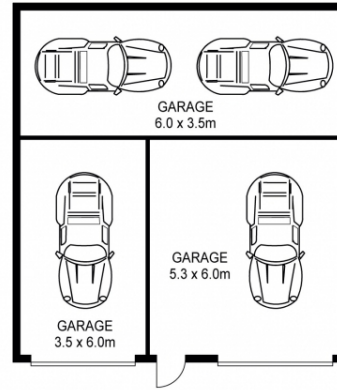
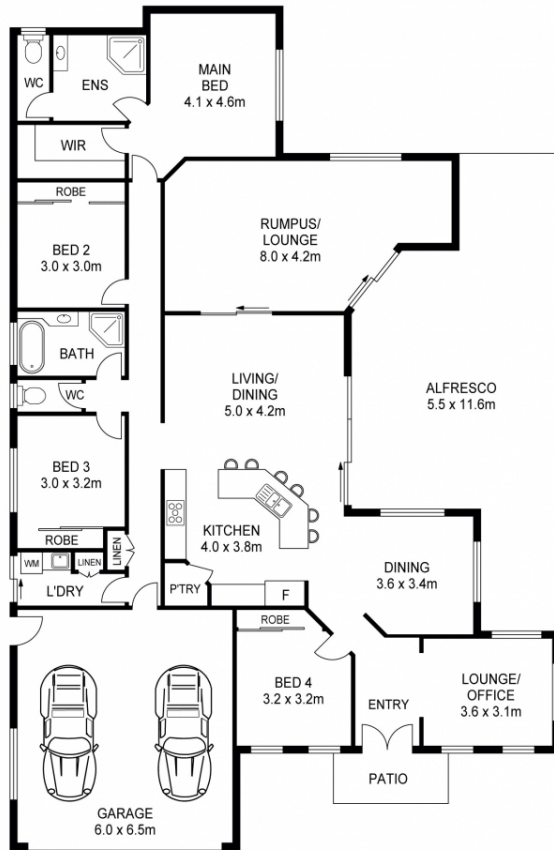
4 BED | 2 BATH | 6 CAR

PRICE:
\$705,000

OPEN FOR INSPECTION:
N/A



Gail Bernardin
0418645506
gail@creedonpropertygroup.com
www.gailbernardin.com.au



SCALE (METRES)

PLANS SHOWN ONLY INDICATIVE OF LAYOUT. DIMENSIONS ARE APPROXIMATE.

Disclaimer: Please note this floor plan is for marketing purposes and is to be used as a guide only. All dimensions are estimates only and may not be exact measurements.