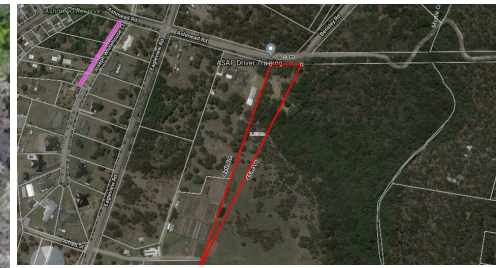


16 ASHMEAD ROAD, MINTO, NSW, 2566



SOLD

THREE ACRES OF VACANT LAND

The ultimate opportunity to own yourself three acres of vacant land has risen and it couldn't be in a more ideal location than the growing suburb of Minto. Live amongst the lush greenery, peace & quiet serenity while being only a short distance away from all of your modern comforts. The options are only limited by your imagination, this blank canvas is awaiting it's new and creative owners.

Features Include:

- Vacant land just shy of 3 acres
- Private with gorgeous rural views
- Surrounded by approx 33ha of bushland
- Water and electricity services available
- Loads of street appeal
- Ready to build the home of your dreams
- Close to all of Minto's amenities
- Call now to request more information

This amazing block of land is located in the growing suburb of Minto, surrounded by lush greenery, situated in a calming relaxing and quiet location, you have the sense of semi rural living in suburbia. You are within close proximity to Minto Marketplace, local schools, Minto train station and a family favourite, the bushwalking tracks of Kentlyn. This home is one to put at the top of your inspection list.

Agency Central believes that all the information contained herein is true & correct to the best of our ability however we encourage all interested parties to carry out their own enquiries.

0 BED | 0 BATH | 0 CAR

PRICE:
\$650,000

OPEN FOR INSPECTION:
N/A



Huss Al Salemi
0411699419
huss@atrealty.com.au
www.agencycentral.com.au