

# 260 WATTLE PONDS ROAD WATTLE PONDS



## FOR SALE

### COUNTRY DREAM HOME

This lovely country homestead set back from the road showcases the very best in privacy and sophistication and is a hidden gem that's just waiting for a new family to move straight in.

The picturesque views overlook the stunning country side with nothing but mountain ranges in every direction.

You'll love to relax and chill out while you enjoy the quiet outdoor area, see the hot air balloons take flight in the distance, or lounge by the pool in complete privacy after a long week.

This high quality family home boasts all the features a discerning family is looking for including:

- Modern country style kitchen with oodles of storage including a walk-in pantry
- Huge master bedroom with walk-in robe and ensuite set away from the other rooms allowing for plenty of privacy
- Three further large bedrooms with built-in robes
- Choice of three living areas to accommodate everyone
- Ducted three phase air conditioning and in-built vacuum system
- LED downlights throughout
- Internal laundry with extra WC
- Covered alfresco area with 11m x 6m pergola
- Superb outlook with views right through to Broken Back Range and mountains
- Sparkling 11m x 4m in-ground pool with roll up pool cover
- Established fruit trees including peaches, oranges, mandarins, limes, lemons, guava, figs, macadamias, almonds, apples, pear, nashi, apricots, grapes and bananas
- Established veggie gardens
- In-ground sprinkler system
- Garden / pool shed
- Two car lock up garage, one with electric roller door, plus a triple carport
- Fully fenced boundary
- External termite treatment barrier and stations
- Water tank
- Set back from the road for further privacy

Call now to organise an inspection!

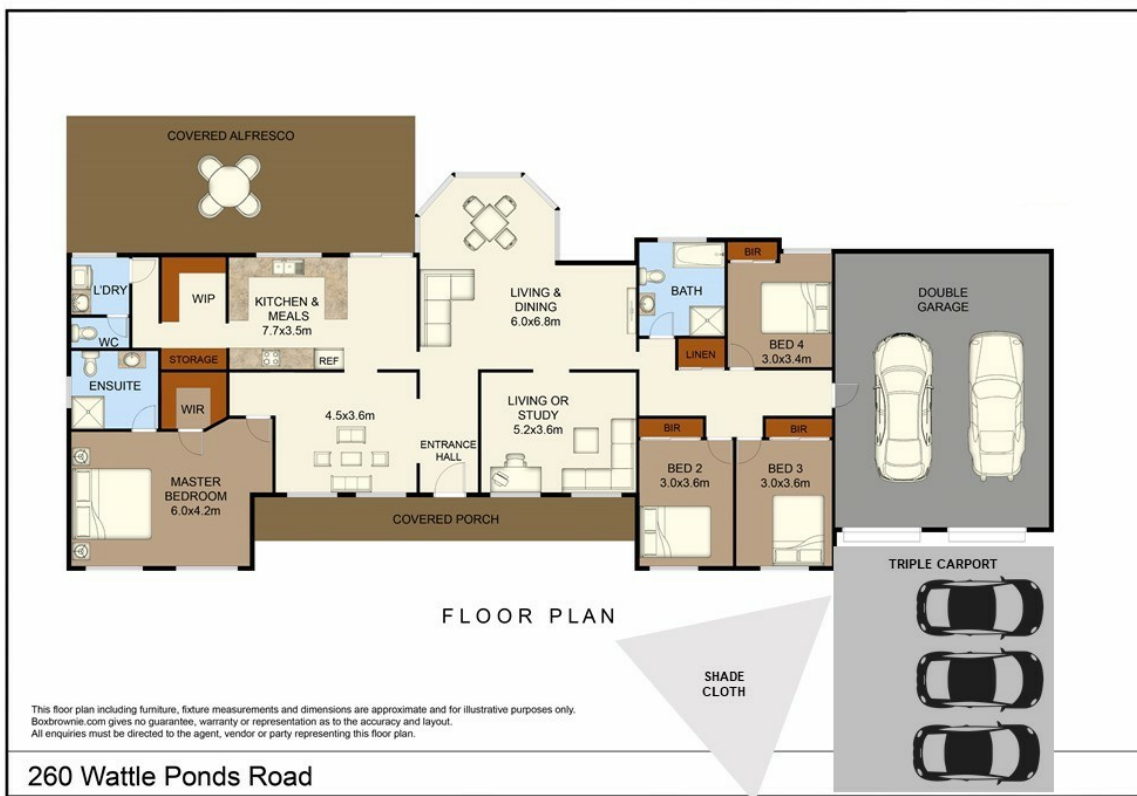
4 BED | 3 BATH | 5 CAR

PRICE:  
\$735,000

OPEN FOR INSPECTION:  
N/A



**Alicia Vaughan**  
**0406814596**  
alicia@atrealty.com.au  
[www.atrealty.com.au](http://www.atrealty.com.au)



Disclaimer: Please note this floor plan is for marketing purposes and is to be used as a guide only. All dimensions are estimates only and may not be exact measurements.