



**SOLD**

## LUXURY BEACHFRONT LIVING!

Spanning two levels on the third and fourth floors and overlooking the pristine coastline from the Sunshine Coast to the Gold Coast hinterland is where you will find unit 13 Deep Blue 1. This fully furnished and self contained apartment is being sold for the first time since it was built on a WIWO basis.

On the lower level you will find a spacious living area which leads out to the balcony with a built in BBQ, sink and fridge. The well appointed kitchen offers stone bench tops with plenty of cupboards and work space. There is also a separate laundry with a toilet adjacent.

Upstairs is the master bedroom with the most amazing water views and a large ensuite with a spa bath. At the rear is a large bedroom with two long single beds that become a king. There is a second living space at the top of the stairs which currently has a set of bunks in place. You will also find a full size bathroom on the upper level.

The Deep Blue apartments have a private pool for owners and guests only, but you also have the full use of the resorts facilities.

There is a single lock up garage so you can store your car or toys when you are back on the mainland.

Live in or holiday let, the choices are yours, this is an opportunity not to be missed! This apartment comes fully furnished and self contained on a WIWO basis!

**2 BED | 2 BATH | 1 CAR**

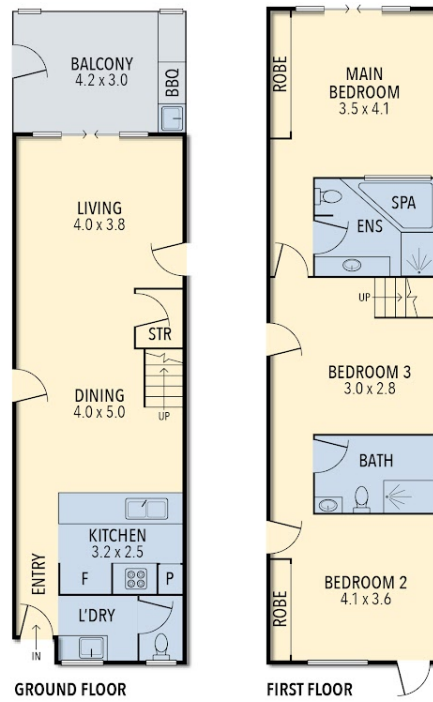
**PRICE:**  
**\$410,000**

**OPEN FOR INSPECTION:**  
**N/A**



**Juliet Ireland**  
**0421606878**  
julietireland@atrealty.com.au  
Selling By The Bay

## UNIT 13 - TANGALOOMA RESORT, MORETON ISLAND



TOTAL APPROX. FLOOR AREA 135 SQ.M.

Whilst every attempt has been made to ensure accuracy of the floor plan contained here, measurements of doors, windows, rooms, and any other items are approximate and no responsibility is taken for any error, omission, or mis-statement.  
This plan is for illustrative purposes only and should be used as such by any prospective purchaser. The services, systems and appliances shown have not been tested and no guarantee as to this operability or efficiency can be given.

Disclaimer: Please note this floor plan is for marketing purposes and is to be used as a guide only. All dimensions are estimates only and may not be exact measurements.