

SOLD

EXPANSIVE HOME ON 1400M2 – POTENTIAL SUBDIVISION

Meticulously cared for and beautifully presented, this home has been designed with family in mind and incorporates multiple living areas, a media room, well-appointed bathrooms and laundry, as well as an outdoor entertainment area that will cater to the needs of all families.

Upon entry, you are greeted by a spacious light filled foyer leading to the main hub of the home. The well-appointed kitchen complete with induction cooktop, oven and an abundance of storage is centrally located and flows seamlessly to the alfresco entertaining area adjoining the crystal blue swimming pool.

Four bedrooms including a spacious master bedroom are on offer in this beautiful family home, complete with ceiling fans, air conditioning, built-in wardrobes and a master bedroom boasting a private ensuite, WIR and complimented by views of the pool.

The undercover alfresco, resort style pool, and landscaped gardens are perfect for the entertainer and flow seamlessly from the dining room and kitchen. With established gardens and a peaceful 1400m2 yard, this home separates itself from the rest on the market.

A separate 9x6 garage with direct street access provides the perfect place for the home handyman or those wanting to store the family boat or caravan.

With an impressive 47m frontage, large home and a 6x9 shed, this is the perfect property for an investor looking to maximise returns. This expansive home has been cleverly positioned to one side making the possibility of future subdivision easier to achieve (subject to council approval).

It's rare to find a home of this quality, take advantage of the opportunity to secure this delightful home in one of Forest Lakes popular locations. This is just what you are looking for, come and see for yourself!

Features Include:

- Large undercover patio
- Solar 1.5kW
- Reverse cycle air conditioning

4 BED | 2 BATH | 4 CAR

PRICE:
\$765,000

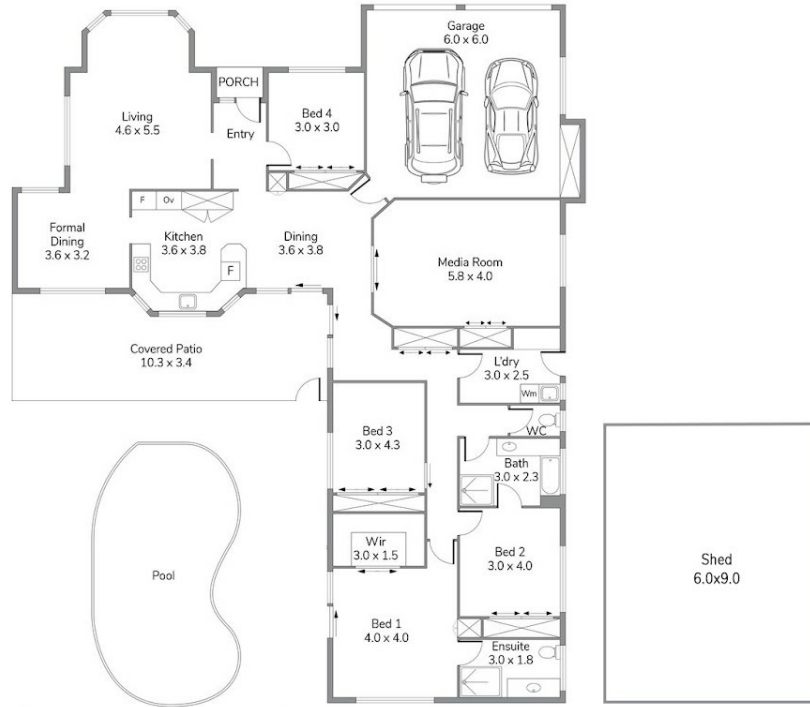
OPEN FOR INSPECTION:
N/A



Helana Kuhl
0447522643
helana@atrealty.com.au
www.atrealty.com.au

7 Manet Cres, Forest Lake

4 Bed | 2 Bath | 2 Car



MOUNTFORT

Internal 228.0m² | External 134.8m² | Total 362.8m²

Note - All sizes are approximates

Please note this floor plan is for marketing purposes only. Dimensions and layout are approximate. Mountfort Media gives no guarantee or warranty over the accuracy of this plan, interested parties should make their own enquiries

Disclaimer: Please note this floor plan is for marketing purposes and is to be used as a guide only. All dimensions are estimates only and may not be exact measurements.