

3 KEEPIT COURT, WARNER, QLD, 4500



SOLD

CALL PATRICK D'ARRIGO ON 0447 381 869 FOR FURTHER DETAILS!!

CUTE AS A BUTTON 3 YEAR'S YOUNG WARNER LAKES LIFESTYLE GEM! STYLISH KITCHEN + GREAT YARD SPACE!

Only 20m from the sparkling lakes of Warner, I proudly present to you this stylish 3 year's young family gem! Offering much more than first meets the eye this is a home that represents an amazing new lifestyle opportunity for any family looking to secure their next nugget of gold!

The stylish kitchen is surely the focal point of the home with an endless flow of stone benches, a large workbench, plenty of cupboard space & perfectly finished with quality stainless steel appliances including a 5 burner gas cooktop & dishwasher finishing this space off perfectly.

The home comes complete with generous living & dining areas on either side of the kitchen plus it offers an additional generous kids rumpus / 2ND family living space upstairs, all making this a home offering enviable size and separation ready to accommodate even the largest of growing families!

All 4 bedrooms have been designed with family comfort as a premium offering built-ins & ceiling fans in all. The spacious master bedroom will most definitely impress & comes complete with a stylish ensuite with stone bench vanity.

The outside entertaining area would be my favourite part of this delectable gem, with a seamless flow from indoor living to outdoor entertaining, out to the large tiled alfresco dining area all entrenched in absolute privacy and offering an expansive stretch of yard space, all making this the perfect spot for the Sunday BBQ and watch the kids & pets run amok for many a year to come!

Situated in an ultra convenient location close to schools, shops & only 20m to the picturesque Warner Lakes & surrounding kids playgrounds & parklands this is certainly an opportunity not to be missed!

Features include;

4 BED | 2 BATH | 2 CAR

PRICE:
\$534,999

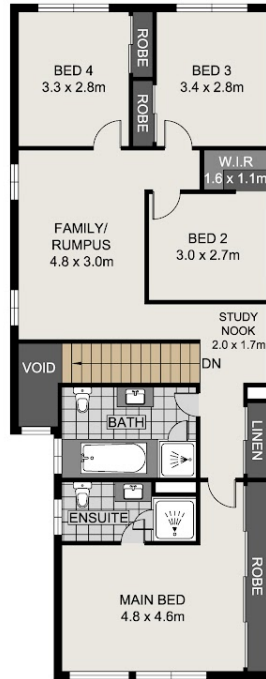
OPEN FOR INSPECTION:
N/A



Patrick D'Arrigo
0447381869
pdarrigo@atrealty.com.au
www.atrealty.com.au



LOWER LEVEL



UPPER LEVEL



Scale in metres, indicative only. Dimensions are approximate. All information contained herein is gathered from sources we believe to be reliable. However, we cannot guarantee its accuracy and interested persons should rely on their own enquiries.

INT : 152.71m²
 EXT : 12.89m²
 GARAGE : 39.60m²
 TOTAL : 205.20m²

3 Keepit Court, Warner

Disclaimer: Please note this floor plan is for marketing purposes and is to be used as a guide only. All dimensions are estimates only and may not be exact measurements.