

# SOLD

## HIDDEN TREASURE IN THE HEART OF RED HILL

Welcome to the Terrace Mews, a boutique complex consisting of three architecturally designed townhouses tucked away but conveniently close to everything. Number three is positioned furthest from the road and offers shelter from the hustle and bustle of city life. Spread across two levels this beautiful 90's townhouse complete with an atrium, high ceilings, and timber is the perfect place to call home.

Recently renovated this very spacious townhouse has everything you could possibly want. You will be taken aback by how light and bright the home is, especially on the first level. This is where the double garage and huge master complete with walk-in, ensuite, and views out to Mt Cootha give it a lofty feeling.

Head down the stairs to the lower level which is all open plan living and by pulling back the massive floor to ceiling doors you connect indoors with outdoor living. The perfect home to embrace the Queensland climate, offering a number of options to sit and relax at the end of a busy day, or spend time with family and friends at the weekend. The kitchen, main bathroom, and laundry are also on this level, with 2 bedrooms separated from the living areas.

On your doorstep:

- Botanica Real Food | 25m
- Le Coin Bistro | 25m
- Red Hill Cinemas | 48m
- Red Hill Seafood | 60m
- Clovelly Estate Cellar Door | 104m
- Craft Wine Store | 208m
- Bus Stop | 142m
- CBD | 2.8km
- Suncorp Stadium | 1.3km

Ground Level | Entrance

- Remote Double Garage
- Huge master bedroom
- Air conditioner
- Walk-in robe
- Ensuite
- Atrium

3 BED | 2 BATH | 2 CAR

PRICE:  
\$760,000

OPEN FOR INSPECTION:  
N/A



**Andrew Botwright**  
0402784250

andrewbotwright@atrealty.com.au

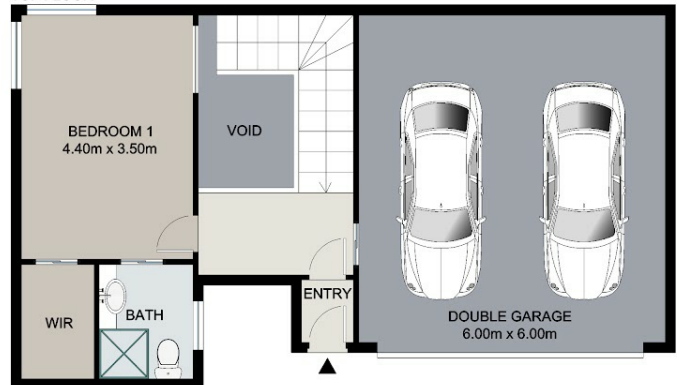
[www.atrealty.com.au](http://www.atrealty.com.au)

GROUND FLOOR



APPROXIMATE INTERNAL SURFACE AREA = 149.9 SQ M  
APPROXIMATE EXTERNAL SURFACE AREA = 33.1 SQ M  
APPROXIMATE TOTAL SURFACE AREA = 183.0 SQ M

TOP FLOOR



Disclaimer: Please note this floor plan is for marketing purposes and is to be used as a guide only. All dimensions are estimates only and may not be exact measurements.