



SOLD

SETTLE IN YOUR OWN SANCTUARY

From the moment you enter the travertine entrance porch of 2015 Gracemere Gardens Circuit you know this home offers a certain quality that exudes luxury, comfort and secure living. The bright, open plan living areas offer entertaining and unconfined living for the astute buyer. Entertain and prepare dinner parties at the same time in the bespoke gourmet open plan kitchen with Smeg appliances, ample storage and stone bench tops.

Three comfortable bedrooms (master with en-suite), all with fitted wardrobes/ storage allow for flexible accommodation arrangements whether it's a child's room, the occasional guest room or a study office... you have that choice.

A generous master bedroom with en-suite has a fantastic view through sliding glass doors. The view extends into the lanai and beyond to the alfresco area. Sandstone tiles surround the magnesium pool. Here you can entertain in all weathers as the roof has been extended to provide a seamless roofline; the ultimate all weather entertaining area.

The enclosed and private entertaining area encompasses a magnesium enriched pool; its water offers added health benefits. Unlike a standard salt water pool, your eyes will experience little to no irritation...great for young children!

The double garage has epoxy sealed flooring surface that is resistant to tire scuffs, most oils and marks. This will ensure the area is always immaculate. Additional hard standing parking on the driveway for two or more cars is available.

Feel safe and secure in this private gated estate, which has regular patrols. The home is equipped with a security system which alerts the resort security base if ever the need arises.

This upgraded home is situated in the prestigious Gracemere Estate in the blue chip suburb of Hope Island. It is a five minute buggy drive to Coles Hope Island or ten minutes to Sanctuary Cove Village where you can enjoy all the coffee shops, restaurants and retail venues the centres have to offer.

The property has been modelled to be a low maintenance home, so you can spend the day on the golf course, tennis court, out shopping or doing whatever you like, as long as it's not jobs around the house!

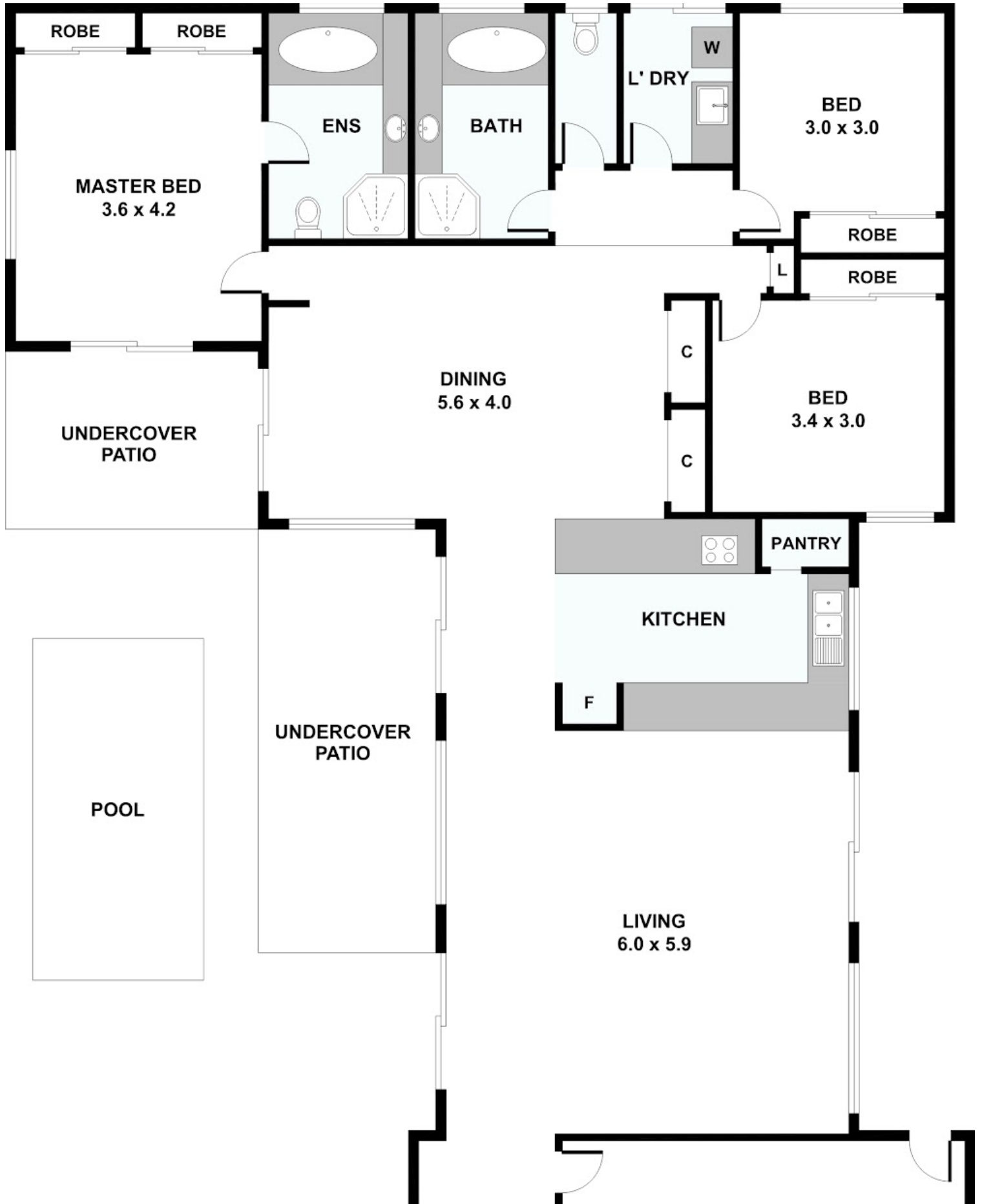
3 BED | 2 BATH | 3 CAR

PRICE:
\$750,000

OPEN FOR INSPECTION:
N/A



Chris Nicholson
0406292249
chrisn@atrealty.com.au
www.atrealty.com.au



Disclaimer: Please note this floor plan is for marketing purposes and is to be used as a guide only. All dimensions are estimates only and may not be exact measurements.

Chris Nicholson
 0406292249
 chrisn@atrealty.com.au
 www.atrealty.com.au



GARAGE 5.9 x 5.7 @realty

