



SOLD

A TOUCH OF CLASS

This period style home has been cleverly designed by the owners encompassing modern living with old school charm. Spread over a two story spacious floor plan that has been maximised to ensure comfort & practicality is achieved on all levels. Vibrant interiors carry you effortlessly from room to room & quality features can be adorned at every turn. Each room is unique, from cathedral ceilings to private balconies accompanied with the home's overall sense of grandeur is nothing short of impressive.

Features Include:

- Front porch overlooking the manicured gardens
- Boasting six bedrooms with built in robes to three & split system air conditioning to each
- The master suite includes an ensuite, walk in robe, ceiling fan & double doors opening up to a private balcony
- The sixth bedroom is catered to guests & includes an ensuite & walk in robe
- Formal open plan living & dining room
- Family room with built in bar & double doors opening up to the back porch
- Well appointed timber kitchen with ample cupboard & bench space
- Built in Miele Coffee Machine
- Built in plate warmer
- Gas cooking
- Stainless steel appliances including a dishwasher & rangehood
- Built in pantry
- Breakfast bar
- Sitting room upstairs
- Unique bright airy bathroom located upstairs
- Powder room located downstairs
- Spacious laundry with built in cupboards & backyard access
- Linen cupboard
- Split system air conditioning in living room
- Ample timber framed windows allowing the home to fill with natural light
- Security cameras
- 2x 4500 Recycled water tanks
- 1.5kw Solar panels
- Gas points inside & outside
- Back veranda overlooking the established greenery

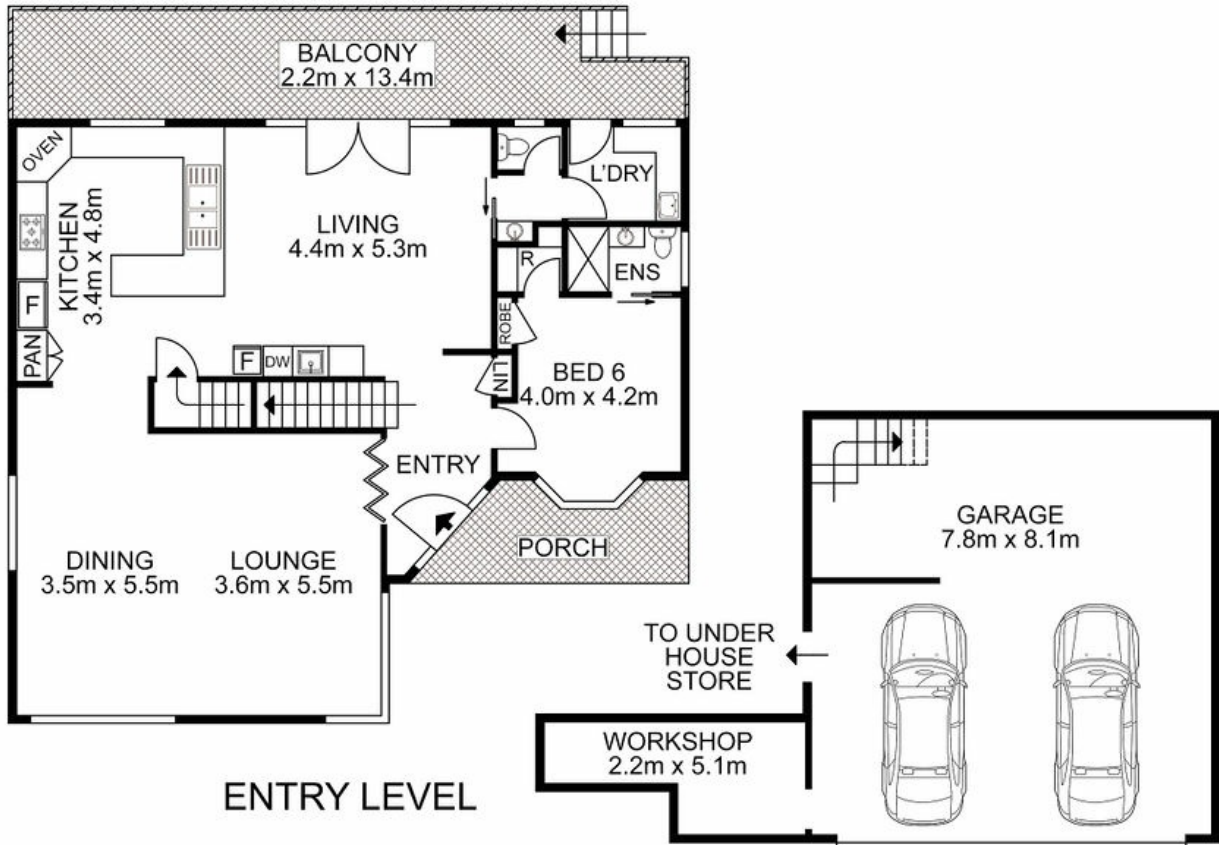
6 BED | 2 BATH | 2 CAR

PRICE:
\$950,000

OPEN FOR INSPECTION:
N/A

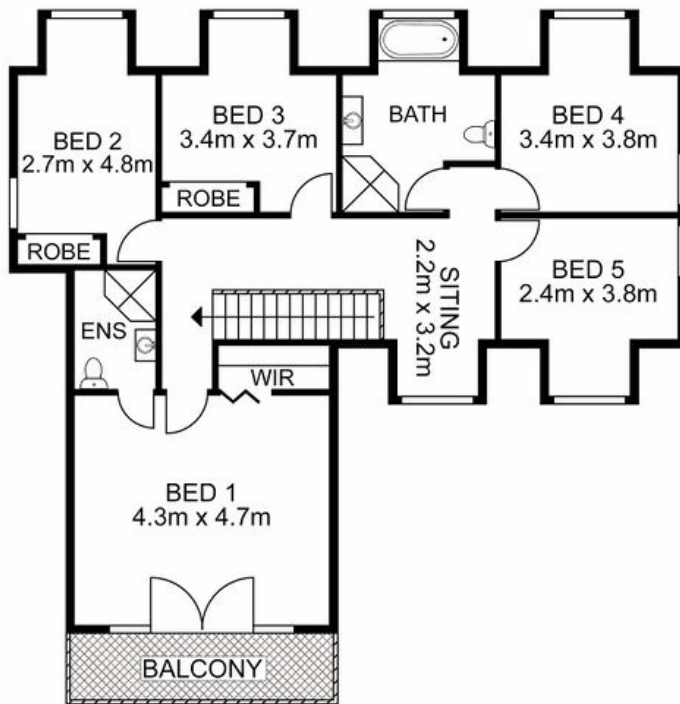


Bobby Reynolds
0432173566
 bobby.reynolds@atrealty.com.au
agencycentralwilton.com.au



ENTRY LEVEL

LOWER LEVEL



UPPER LEVEL



Disclaimer: Please note this floor plan is for marketing purposes and is to be used as a guide only. All dimensions are estimates only and may not be exact measurements.

8 Ronald Street, Campbelltown

Bobby Reynolds All measurements are approximate • Drawn for marketing purposes only
 0432173566
 bobby.reynolds@atrealty.com.au
 agencycentralwilton.com.au

