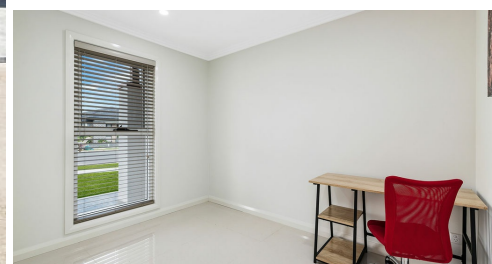


18 DOWIE DRIVE CLAYMORE



FOR SALE

SPACIOUS FAMILY HOME WITH A GRANNY FLAT

This fantastic opportunity to secure yourself a modern family home with the bonus of having the potential to earn an extra income with the two bedroom Granny Flat will not last long. The use of space has been maximised to ensure a high standard of living accompanied with practicality is achieved, spread over an impressive floorplan with quality features adorned at every turn.

Features Include:

MAIN HOUSE

- Four generously proportioned bedrooms with built in robes & ceiling fans to two
- The master suite includes a walk in robe & an ensuite
- The bedroom to the front of the home can be used as a study or home office
- Open plan family & dining room
- Well appointed kitchen with ample cupboard & bench space
- Gas cooking
- Stainless steel appliances including a dishwasher
- Walk in pantry
- Breakfast bar overlooking the open plan living
- Theatre room
- Vibrant airy bathrooms with floor to ceiling tiling, the main includes a bathtub
- Ducted air conditioning
- LED Downlights
- Undercover tiled alfresco
- Low maintenance yard with timber decking
- Garden shed
- Water tank
- Double garage with remote & internal access

GRANNY FLAT

- Separate access
- Front porch with enclosed courtyard
- Open plan living & dining
- Well appointed kitchen with ample cupboard & bench space
- Gas cooking
- Two generously proportioned bedrooms with built in robes
- Bright & airy bathroom
- Split system air conditioning

6 BED | 3 BATH | 2 CAR

PRICE:

\$839,000 - \$859,000

OPEN FOR INSPECTION:

N/A



Huss Al Salemi

0411699419

huss@atrealty.com.au

www.agencycentral.com.au