

# SOLD

## UNDER OFFER - WHITSUNDAY BARGAIN \$135,000 NEGOTIABLE.

Set in a beautiful tropical resort location, high on a gently sloping hill to catch the cool Whitsunday sea breezes. The high ceilings, open plan living and large windows provide a beautiful light filled space. The modern well-appointed kitchen has updated electric appliances and plenty of cupboard space. This unit is in excellent condition and has been tastefully decorated. Perfectly situated - upstairs on the end of the first building in complex of four buildings. This unit is currently rented at \$280 per week until end of January 2021. Three large bedrooms all with generous built in robes. Internal laundry for your convenience. Furnishings and appliances have been replaced and updated. The unit has ducted air conditioning and ceiling fans. The bedrooms are carpeted and the living area features parquet floors, both in good condition.

The gated entrance provides extra security and the unit has its own private entrance, owner's carport and visitor's car park. The unit is serviced by underground power, town water is cable TV ready and NBN is available in the area.

Laguna Quays is located just 5 mins from the Township and Beach of Midge Point where you can visit the Midge Point Tavern, the local takeaway and grocery store and collect mail at the post office. Its 30 mins drive to Proserpine with all conveniences and amenities, 45 mins from Cannonvale and Airlie Beach. The Domestic airport is 25 mins drive. There is a primary state school at Bloomsbury just 15 mins away as well as Fuel, post office, bottle shop, takeaway, produce store and groceries. School Bus services the area for schools in Bloomsbury and Proserpine. For more information about the local area or Body corporate information please contact Roz Tedge

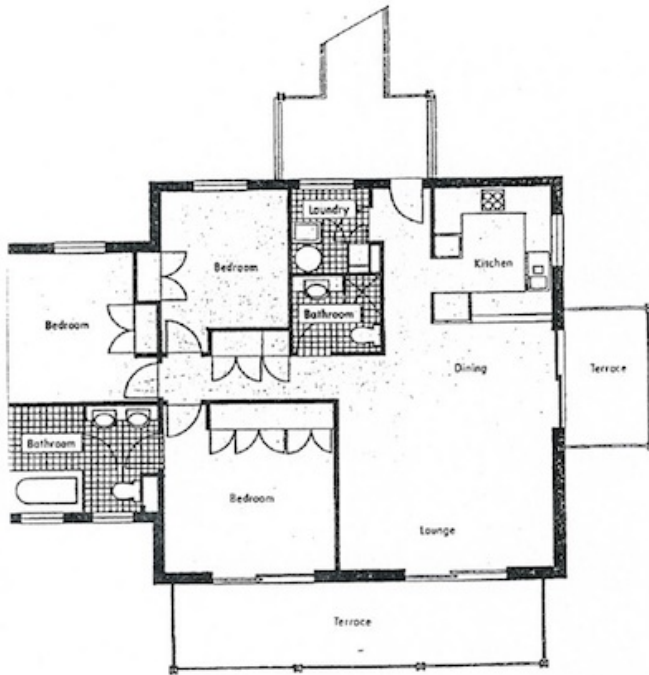
3 BED | 2 BATH | 1 CAR

PRICE:  
\$120,000

OPEN FOR INSPECTION:  
N/A



**Roz Tedge**  
**0424653717**  
roztedge@atrealty.com.au  
[www.atrealty.com.au](http://www.atrealty.com.au)



TYPE A  
THREE BEDROOMS

Disclaimer: Please note this floor plan is for marketing purposes and is to be used as a guide only. All dimensions are estimates only and may not be exact measurements.