

116 SMYTHE STREET, CORINELLA, VIC, 3984



SOLD

LIGHT, BRIGHT AND PRIVATE

This magnificent home not only presents immaculate quality with water views, it also provides lifestyle options and opportunity.

Perfect for investors, first home buyers or downsizers looking for a well proportioned parcel of land (approx.) 910m2, with the possibility to subdivide STCA, the property also provides rear access via a back lane.

The home itself is tasteful in its colour choices from the tiles to the carpets right down to the paint. It is cleverly planned out to offer holiday rental opportunities whilst living there, or simply enjoying the entirety of a huge home. The master suite offers a huge bedroom, ensuite and parents retreat with wet bar opening onto a large north facing balcony that captures the northern and eastern views of the bay. The home offers 3 other bedrooms with built in robes a main bathroom, powder room, the open plan kitchen offers quality new appliances and flows into the dining and lounge area. The high pitched ceilings give an added air of space and light. There is a wood fire for on those winter days and nights, and a reverse cycle split system providing comfort on the warmer days and nights.

There is no shortage of storage spaces with this home.

This striking home will surprise and delight in its blissful seaside setting in the heart of Corinella.

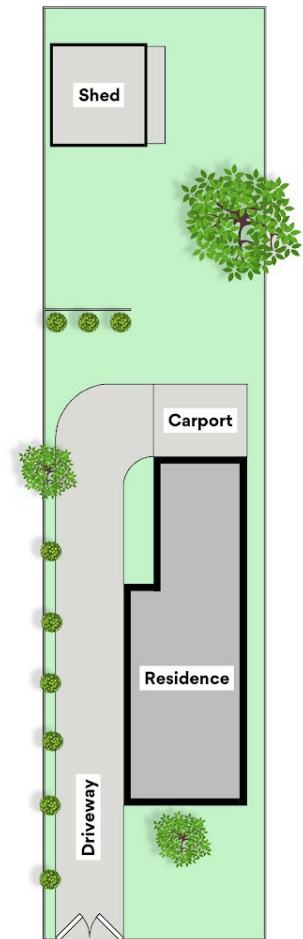
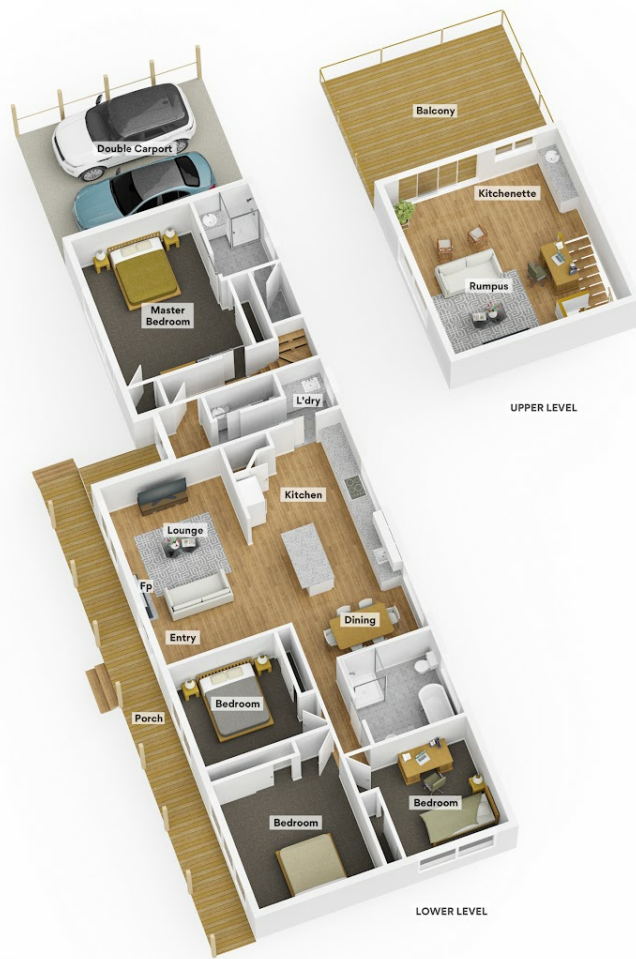
4 BED | 2 BATH | 0 CAR

PRICE:
\$710,000

OPEN FOR INSPECTION:
N/A



Tamara Leskie
0448809458
tamara.leskie@atrealty.com.au
www.atrealtypropertyexperts.com.au



116 Smythe Street, Corinella

Whilst every attempt has been made to ensure the accuracy of the floorplans contained here, measurements of doors, windows and rooms are approximate and no responsibility is taken for any error, omission or misstatement. These plans are for representation purposes only.

Disclaimer: Please note this floor plan is for marketing purposes and is to be used as a guide only. All dimensions are estimates only and may not be exact measurements.