



SOLD

THE BEST IN FAMILY LIVING

BE IMPRESSED WITH THIS ONE-OF-A-KIND DESIGNED LUXURY HOME OVERLOOKING PARKS AND GARDENS. DESIGNED FOR FAMILY AND ENTERTAINING IN MIND. IMPRESSIVE ON THE OUTSIDE AND PERFECT ON THE INSIDE.

LUXURY IS THE WORD AS WALK INTO THIS HOME AS FEATURES SUCH AS HIGH CEILINGS, DUCTED REVERSE CYCLE AIRCONDITIONING, AND QUALITY FIXTURE FITTINGS THROUGHOUT.

A STUNNING KITCHEN WITH HEAPS OF BENCH SPACE AND STONE BENCHTOPS, LOOKS OVER A LARGE OPEN MEALS FAMILY AREA WITH HIGH COMMERCIAL WINDOWS WITH GREAT VIEWS OVER PARKLANDS.

MASTER BEDROOM IS OF 5 STAR RESORT STYLE WITH STONE FEATURES, DEEP SPA BATH, BUILT IN ROBE PLUS DRESSING ROOM OR OFFICE WHICH EVER SUITS THE FAMILIES NEEDS.

THREE OTHER BEDROOMS ARE ALL LARGE WITH BUILT IN ROBES, AND COMPLEMENTED BY CLASSY 2ND BATHROOM

THERE ARE FOUR LIVING AREAS INCLUDING THEATRE ROOM TO WATCH YOUR FAVOURITE MOVIES OR TV SHOWS. THE PERFECT GAMES ROOM IDEAL FOR EIGHT BALL TABLE WITH BUILT IN BAR TO ENTERTAIN THE LADS, WHICH LEADS TO AN ENCLOSED ALFRESCO AREA WITH SLOW COMBUSTION HEATING, GREAT FOR ENTERTAINING ALL YEAR ROUND WITH FAMILY AND FRIENDS.

DOUBLE GARAGE UMR WITH REAR ACCESS TO 6 X 7.5 GARAGE.

A GREAT PLACE AS A WORKSHOP AND STORAGE AS THERE IS SIDE ACCESS FOR BOATS AND CARAVANS.

BEAUTIFUL ESTABLISHED GARDENS AND LAWNS GO WITH THE TERRITORY.

INSPECTION WILL REVEAL ALL OF THIS PROPERTIES HIDDEN TREASURE

RLA 269823

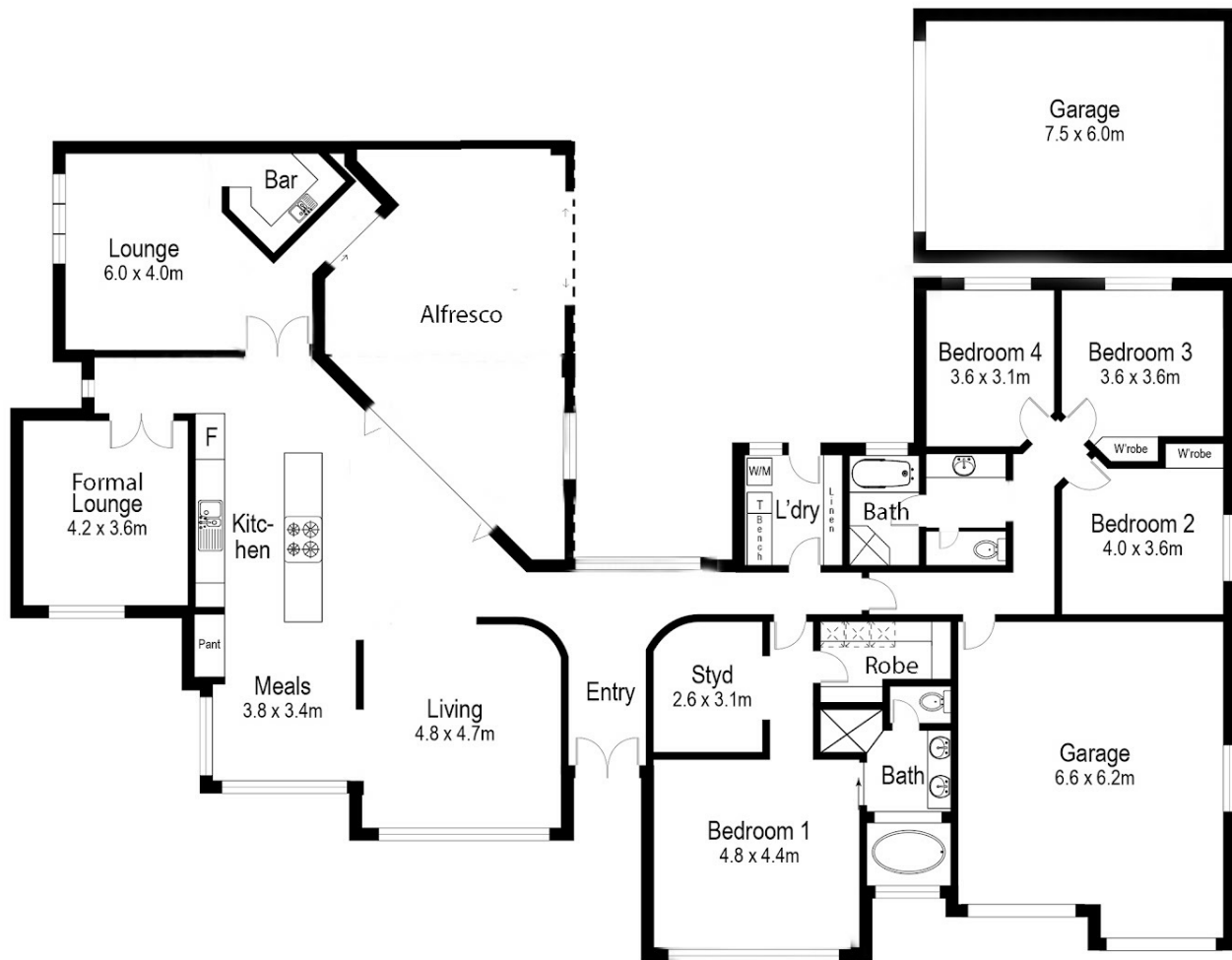
4 BED | 2 BATH | 4 CAR

PRICE:
\$505,000

OPEN FOR INSPECTION:
N/A



Peter Dempsey
0418854393
peterdempsey@atrealty.com.au
peterdempseyatrealty.com
RLA: 269823



Floor Plan measurements are approximate and are for illustrative purposes only. While we do not doubt the floor plans accuracy, we make no guarantee, warranty or representation as to the accuracy and completeness of the floor plan

Disclaimer: Please note this floor plan is for marketing purposes and is to be used as a guide only. All dimensions are estimates only and may not be exact measurements.