

FOR SALE

4 WEEMALA DRIVE, WATERVIEW HEIGHTS, NSW, 2460

4  | 3  | 3 



3 TO 5 BEDROOMS, 3 BATHROOMS, MASSIVE POTENTIAL – MUST SELL!

PRICE: Just Listed

OPEN FOR INSPECTION:
N/A

Weemala Drive is high and dry with views over the Clarence Valley. It is a quiet, no-through street, perfect for those that are looking for their own little retreat.

With its own special attributes, 4 Weemala Drive offers a little over 2 acres of lightly timbered land. To me, it provides a natural bush-like settling that perhaps gets lost in a fully cleared small acreage (think less mowing). Birds, kangaroo's, views, and filtered light are offered here. Also, a little extra privacy as the home is tucked further back from the street than any of the neighbours.

The substantial brick and tile home offers a unique, yet very versatile floor plan. Both levels of the home can be independently accessed, yet they are joined by the internal timber staircase.

Here are some of the key attributes to the upper level:

- Large, open, living room with plantation shutters and direct access to a wraparound veranda offering treetop views to Grafton.
- Timber kitchen easily accessed by the large living room or dining nook, depending on where you would like to dine.
- Master bedroom at one end of the home with plantation shutters, built-in wardrobes and an ensuite bathroom on tessellated tiles.
- The second bedroom is central to the home with plantation shutters and built-in wardrobes.
- The light and airy third bedroom with built-in robes is to the opposite end of the home.
- The large, 3-wav. fully equipped bathroom is central to bedrooms 2 and 3 with a separate toilet



Kylie Swift // 0488 161 621

kylie@virtueproperty.com.au // www.virtueproperty.com.au



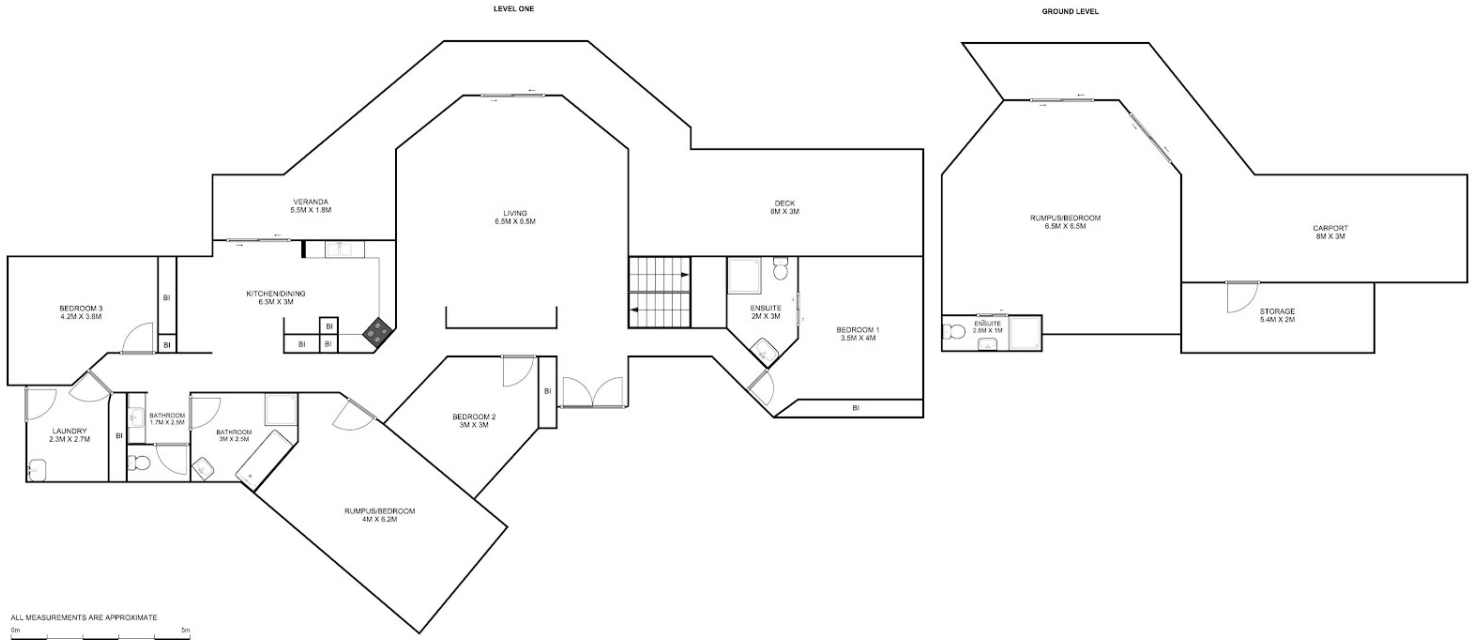
FOR SALE

4 WEEMALA DRIVE, WATERVIEW HEIGHTS, NSW, 2460

4  | 3  | 3 



4 Weemala Drive



Kylie Swift // 0488 161 621

kylie@virtueproperty.com.au // www.virtueproperty.com.au

