



FOR LEASE

MODERN & CONVENIENT AVAILABLE FROM 6TH OF SEPTEMBER 2021

The Cleverley designed Townhouse offer a generosity of space with stylish finishes and quality materials throughout. Spread over a two-story floor plan, the level of sophistication and comfort has been maximised to ensure you get the most enjoyment. All amazing features complete the profile of perfect home for those looking for a relaxed lifestyle coupled with spacious and low maintenance living.

Conveniently located in family friendly suburb and within close proximity to all Local amenities and M1 Freeway.

PROPERTY FEATURES

- Three spacious bedrooms with built-in wardrobes
- Kitchen with stone bench tops and tiled splash back
- Kitchen appliances including gas cooktop, electric oven and dishwasher
- Single secure remote-controlled garage, with rear access
- Designer bathrooms with stone bench tops
- Air-conditioned living areas and all bedrooms
- High ceilings and down-lights throughout
- Full landscaping, including private rear courtyard
- Block out blinds plus Shade blinds throughout

Call Marko Rankovic on 0427 771 810

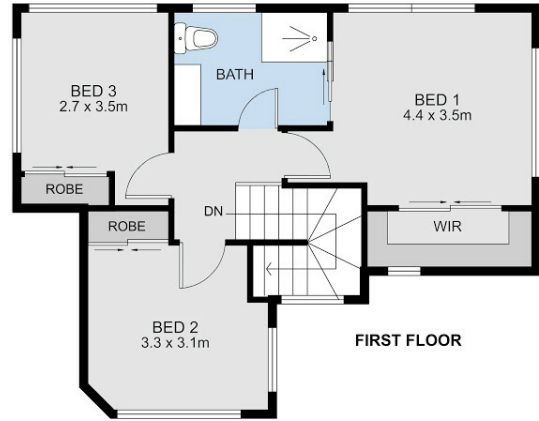
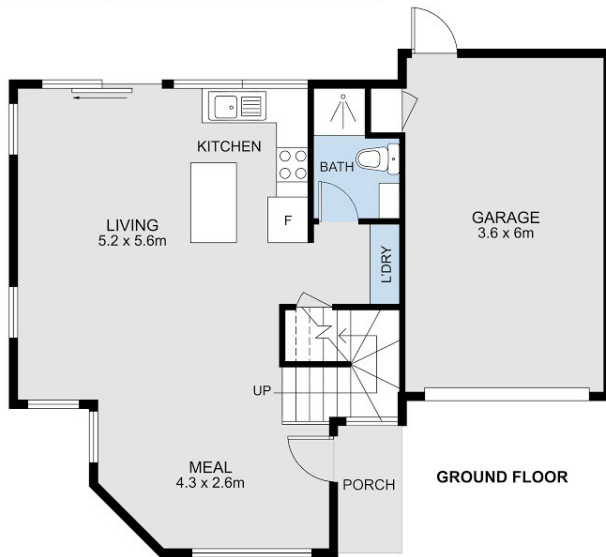
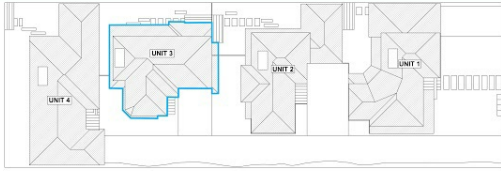
3 BED | 2 BATH | 1 CAR

PRICE:
\$410 per week

OPEN FOR INSPECTION:
N/A



Marko Rankovic
0427771810
markorankovic@atrealty.com.au
www.atrealty.com.au



FLOOR PLAN



Property Address : 3/19 Bride Avenue, Hampton Park

Disclaimer: Please note this floor plan is for marketing purposes and is to be used as a guide only. All dimensions are estimates only and may not be exact measurements.