




Sold

3  | 2  | 2 

15 HARPER COURT, LIGHTSVIEW, SA, 5085

ANSELL
Real Estate



LIGHT, BRIGHT & GENEROUSLY PROPORTIONED

Well located within easy walking distance to a cafe, pubs and the new Lightsview sports center this stylish townhome features high end finishes and generous proportions.

Light filled interiors, luxury finishes and a sought after double garage make this home perfect for the discerning home owner or the investor looking to add a hassle free investment to their portfolio.

Enjoy cooking in your new kitchen complete with 900mm gas cooktop, large stone island bench and an abundance of cupboard space. The kitchen and dining are overlook the central courtyard that floods natural light through the bottom floor.

Upstairs is a huge master bedroom suite complete with its own balcony, a large study space and bedrooms two and three.

What we love about this property:

- Location, location, location
- Generously proportioned room sizes
- Plenty of natural light
- Huge master bedroom with own balcony
- Ducted heating and cooling
- Double garage with rear lane access'
- Luxurv fixtures and fittings throughout

PRICE:
\$495,000

OPEN FOR INSPECTION:
N/A

Callum Ansell // 0468671665

callum@ansellrealestate.com.au // www.ansellrealestate.com.au // RLA 305012



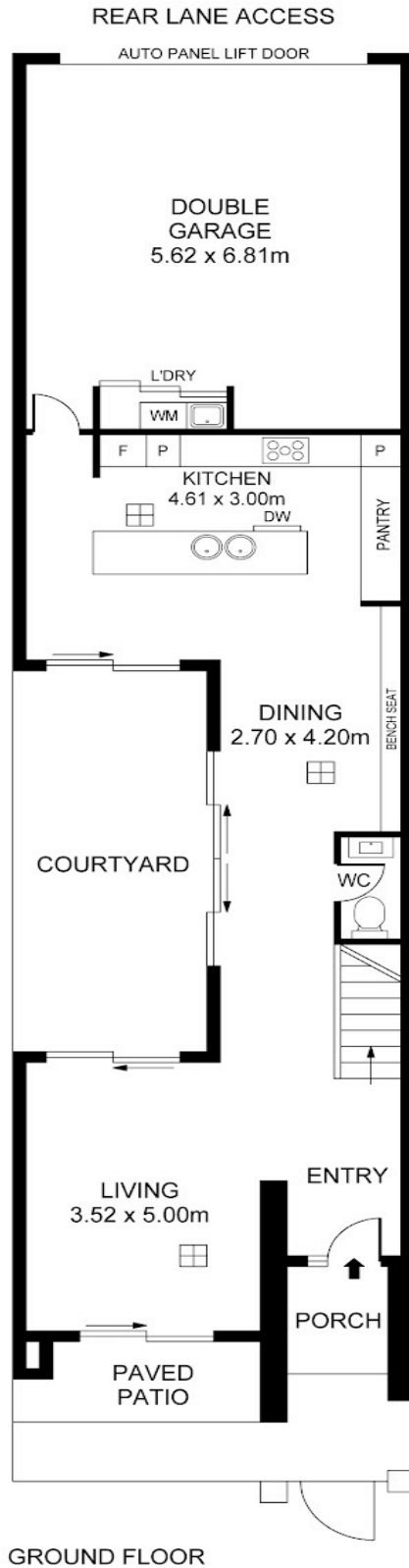
Sold

3 | 2 | 2

15 HARPER COURT, LIGHTSVIEW, SA, 5085

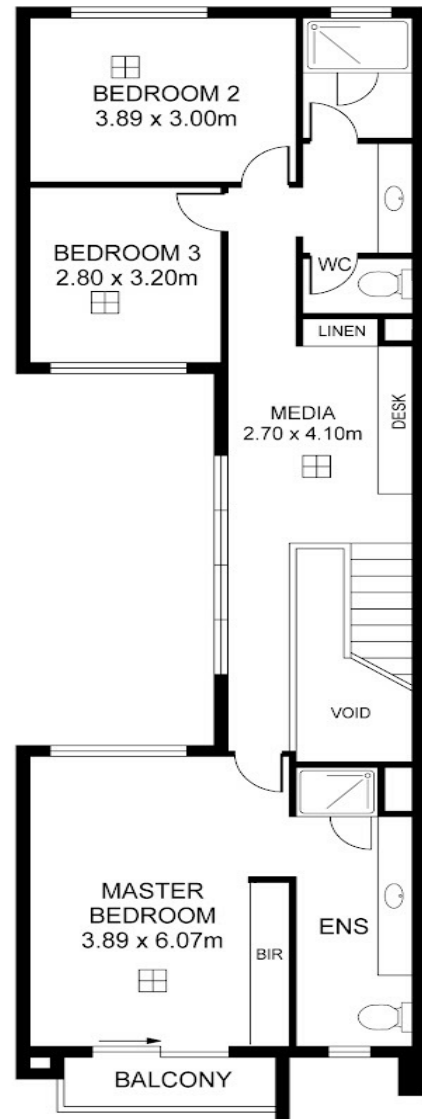
ANSELL

Real Estate



APPROXIMATE AREAS

LIVING	153 Sq M
GARAGE	38 Sq M
PORCH	11 Sq M
BALCONY	3 Sq M
TOTAL	205 Sq M



15 HARPER CIRCUIT, LIGHTSVIEW



Callum Ansell // 0468671665

callum@ansellrealestate.com.au // www.ansellrealestate.com.au // RLA 305012