

SOLD

OPPORTUNITY ABOUNDS IN CENTRAL YANDINA

Set on a flat and leafy street in central Yandina within 5 minutes walk of the village shops, cafes, farmers market and primary school this home was built to last with block construction ensuring it has stood the test of time.

The sunny and inviting front porch leads into a cool interior with timber floors and some original exposed-brick feature walls providing character.

The large living room is set down a step and offers high ceilings and a great space to come together as a family with close proximity to the kitchen and dining areas.

The kitchen is MASSIVE, is still in good working order and offers plenty of storage, a Miele Dishwasher and Westinghouse Oven.

All 3 bedrooms are very generous in size and offer incredibly large built-in robes especially the master which also features an ensuite.

An Additional 2 living or recreation rooms are on offer along with a 3rd shower/toilet room behind the garage. These rooms are fully lined, air conditioned and have high ceilings lending them to an array of uses whether it be a rumpus room, study or home business.

Outside you can enjoy the very large under cover back deck, perfect for entertaining friends or watching the kids/dog enjoy playing in the safe and securely fenced yard.

There is plenty of potential to garden whilst not having to mow much grass and some great citrus trees and a garden shed are already in place.

The wide street frontage allows for a double width driveway and side access onto a hard stand ideal for parking your boat, caravan or perhaps to create a carport.

This property offers so many opportunities, perfectly liveable as it makes for a great family home, renovate it and capitalise on the increasing demand and prices in a new and trendy Yandina or perhaps hold it as a very solid investment property offering great returns.

FEATURES:

- New Fans and Air Conditioning through out
- New Security Screens throughout
- Solar Power and Gas Hot Water
- Securely fenced block with access on both sides
- Garden Shed

LOCATION: Yandina Village is centrally located on the Sunshine Coast a few minutes off of the Bruce Highway and has become increasingly popular in the last few years with a wonderful lifestyle on offer. Famous for the Saturday Farmers market it's country feel, excellent cafe culture, boutique shops and close proximity to the beaches, Noosa and Maroochy Town Centres.

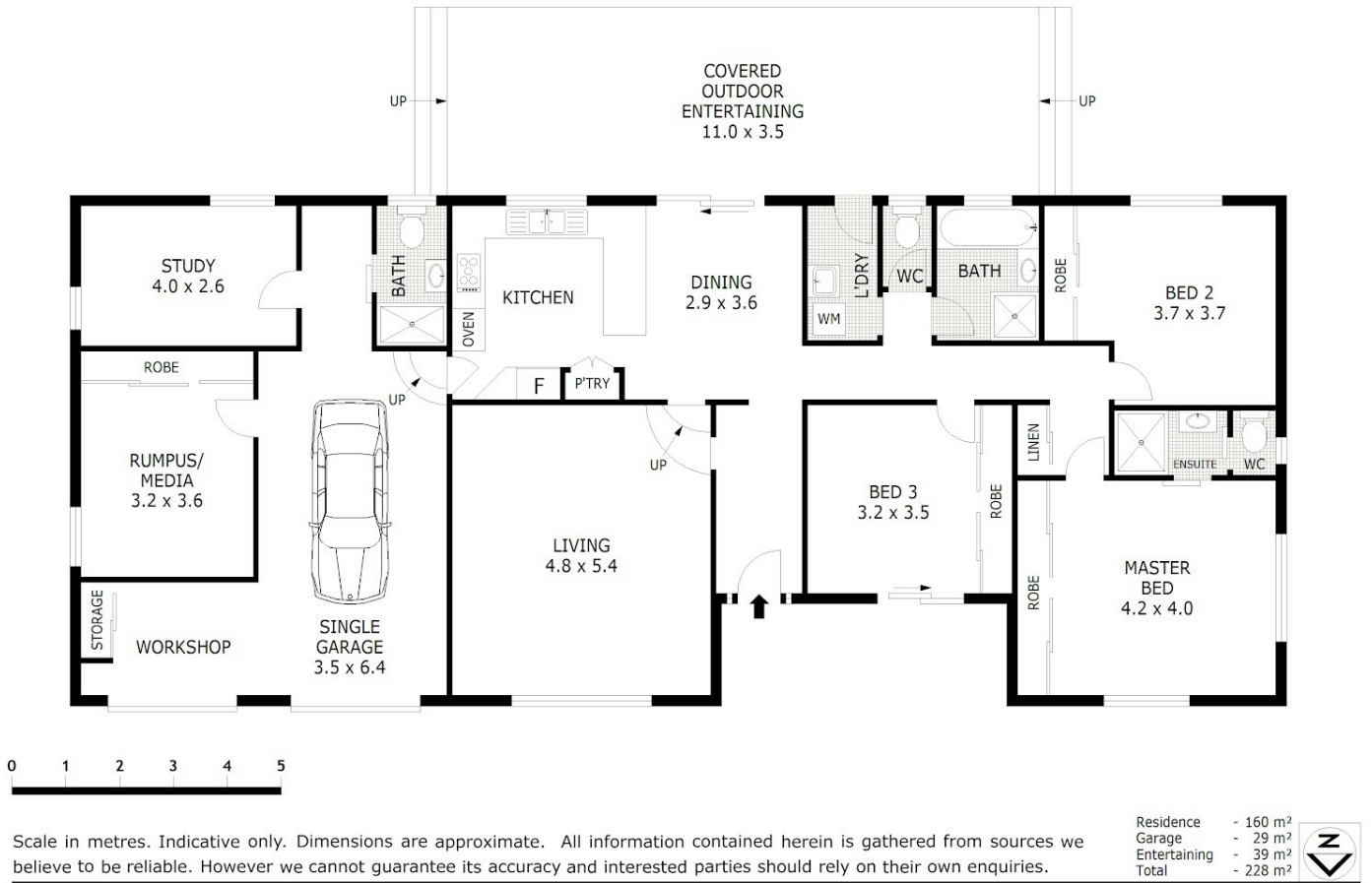
3 BED | 3 BATH | 2 CAR

PRICE:
\$515,000

OPEN FOR INSPECTION:
N/A



Tracy Fishburn
0449141349
tracy@atrealty.com.au
www.atrealty.com.au



45 Stevens Street, Yandina

Disclaimer: Please note this floor plan is for marketing purposes and is to be used as a guide only. All dimensions are estimates only and may not be exact measurements.