



# SOLD

## TROPICAL BILINGA BEACH UNIT – FANTASTIC INVESTMENT

The Gold Coast has maintained strong buyer activity throughout the pandemic and this looks to dramatically increase when borders to southern states open in the near future.

NOW is the time to secure a fabulous investment property – by far the best value currently for sale in the area.

Situated in Bila Vista resort, only 150m to the beautiful north Kirra beachfront, this elevated ground floor apartment has so much to offer - immersed in landscaped gardens, featuring a magnificent pool, spa & BBQ area with the peace of mind of secure access and onsite management.

This spacious, fully furnished one bedroom unit boasts a large, sunny private balcony accessed by both the living room and bedroom with floral treed outlook. With a tiled two-way bathroom with large double shower, well equipped kitchen and laundry, air-conditioned and the most wonderful house proud tenant this property presents in excellent condition. Secure underground car parking, intercom access and holding a private position within the building all adds to the appeal.

The current superb tenant is looking to stay long-term and has a current lease at \$350 a week through to September 2021 making this a great opportunity to boost your portfolio without the hassles that come with changing tenants.

Call us now for more information, inspection times and the opportunity to get ahead of the pack!

1 BED | 1 BATH | 1 CAR

PRICE:  
\$382,000

OPEN FOR INSPECTION:  
N/A



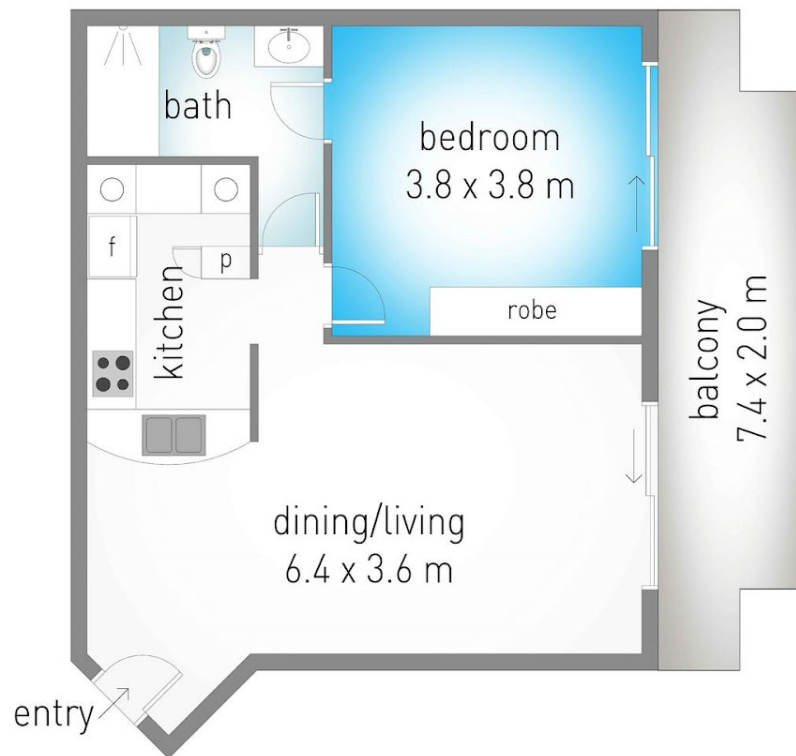
**Michelle Topper**  
0400362639  
michelle.topper@atrealty.com.au  
[www.atrealty.com.au](http://www.atrealty.com.au)

# 12/37-43 Golden Four Drive, Kirra

MICHELLE TOPPER  
REAL ESTATE  
0400 362 639



internal: 60 m<sup>2</sup> | external: 13 m<sup>2</sup> | total: 73 m<sup>2</sup>



Dimensions are approximate. All information contained herein is gathered from sources we believe to be reliable. However we cannot guarantee its accuracy and interested persons should rely on their own enquiries.

Disclaimer: Please note this floor plan is for marketing purposes and is to be used as a guide only. All dimensions are estimates only and may not be exact measurements.

Michelle Topper  
0400362639  
michelle.topper@atrealty.com.au  
[www.atrealty.com.au](http://www.atrealty.com.au)

