



SOLD

SOLD FOR \$975,000 BY BRENDAN JAMES 0422 851 384

Exuding elegance, harmonized with modern sophistication, this expertly crafted residence offers quintessential family living across two stylishly flexible levels. Located in a peaceful enclave, it combines an in-law/guest suite which can be fully closed off for separation.

- * Master built to meticulously high standards
- * Open planned galley style kitchen, living and dining area flowing to the outdoors
- * Four living areas spanning over two levels, one living area could be utilised as a media room
- * Induction cook top, dishwasher and Caesar stone bench tops
- * In-ground pool surround by travertine tiles and gardens adjoining the alfresco entertaining area
- * Enormous master suite with parents' retreat, two walk-in-robos and en-suite with bath
- * Triple car garage with single car garage having drive thru access
- * Substantial off-street parking for an additional 7 vehicles and parking for caravan/boat/trailer
- * In-law suite combines living/dining/kitchenette, bedroom with built-in & en-suite
- * Ducted air-conditioning throughout, solar boosted hot water, landscaped gardens, two garden sheds and water tank
- * Lighting that connects to Wi-Fi throughout which can be controlled through Alexa
- * Ring door bell & security camera that can be operated anywhere in the world
- * Close proximity to Wyong hospital, Warnervale Public School, Mackillop Catholic College, Lakes Grammar School, train station and the M1 motorway. To secure your inspection please contact Brendan James on 0422 851 384.

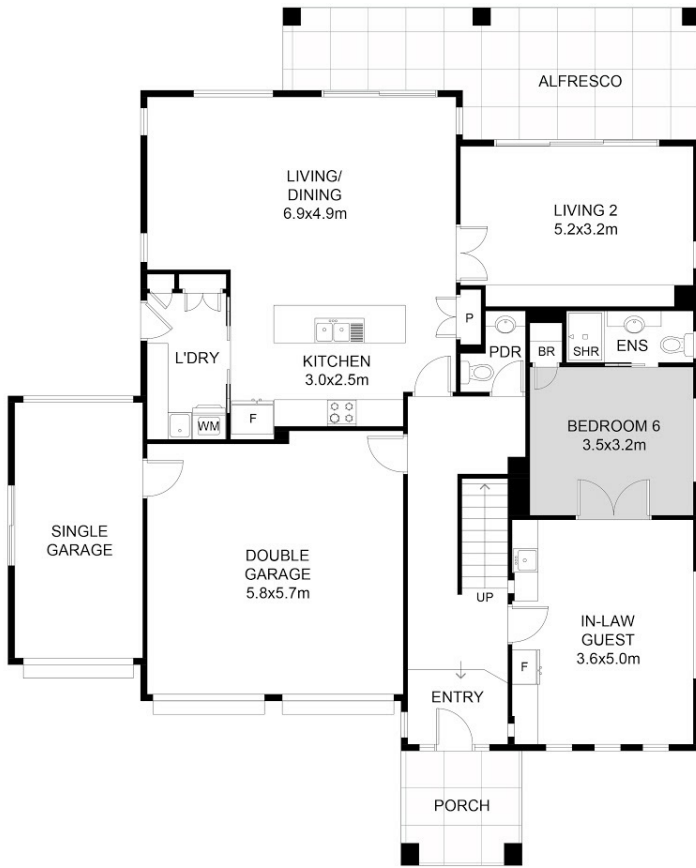
6 BED | 3 BATH | 3 CAR

PRICE:
\$975,000

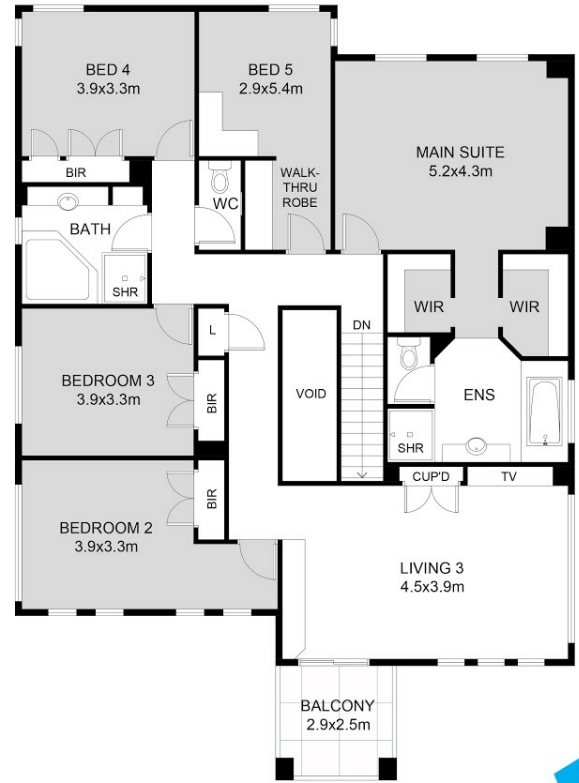
OPEN FOR INSPECTION:
N/A



Brendan James
0422851384
brendanjames@atrealty.com.au
www.atrealty.com.au



GROUND FLOOR PLAN



FIRST FLOOR PLAN



54 Dehavilland Circuit Hamlyn Terrace 2259

Disclaimer: Please note this floor plan is for marketing purposes and is to be used as a guide only. All dimensions are estimates only and may not be exact measurements.