



# SOLD

## ELEVATED WITH DISTANT VIEWS OF LIGHTHOUSE BEACH AND BEYOND!

Positioned on an elevated block, right next door to the newly developed Ocean Estate where architecturally designed homes will soon be built, elevated and with stunning coastal views. This one is definitely worth inspecting with an opportunity to secure a home with so much potential. This property needs an uplift but it is solid with double brick construction and a blank canvas ready for you to dive in and start renovating with creativity!

A charming four bedroom home set in sought after Lighthouse beach location that offers an attractive lifestyle. Light and airy interiors, with two levels, perfect for separate accommodation downstairs with its own separate entry. Upstairs consists of kitchen, dining and two bedrooms with distant ocean views from the family room and downstairs includes two bedrooms, bathroom, garage, laundry and additional storage room which could be used for multiple purposes.

- Renovators delight with open plan living, spacious rooms and raked ceilings
- Timber kitchen with wall oven, lots of bench space and cupboards
- Meals area with timber floors that lead to the family room with huge windows to take in the amazing views.
- Four generously sized bedrooms with built in robes to two, versatility to use the other two bedrooms as another living space
- Two bathrooms (one on each level) with a large shower, vanity and separate toilet.
- Reverse cycle air-conditioning upstairs
- Two good sized decks that have been renewed with composite decking, potential to extend one of the decks further to create a large entertaining area with elevated views and sea breezes.
- Single garage and double carport plus with off-street parking with two extra parking bays off the driveway.
- Storage room at the rear of the garage which is tiled and perfect for hobbyist, wet bar, games room or storage.
- Mature tropical shrubs and trees in the front yard with plenty of scope to create your own theme.

4 BED | 2 BATH | 1 CAR

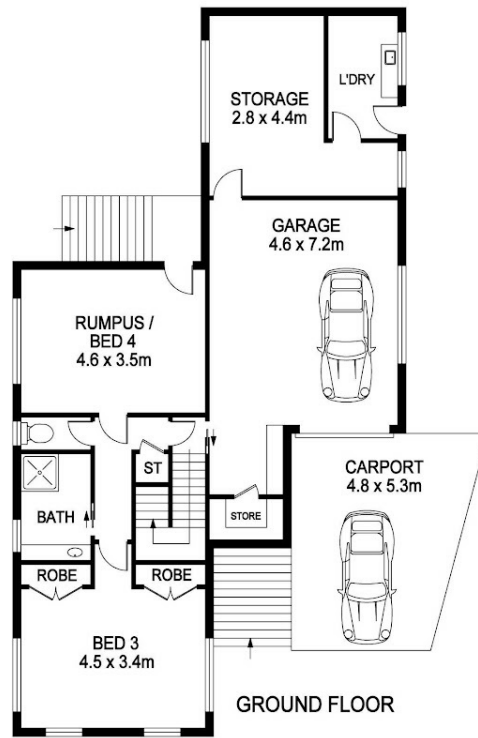
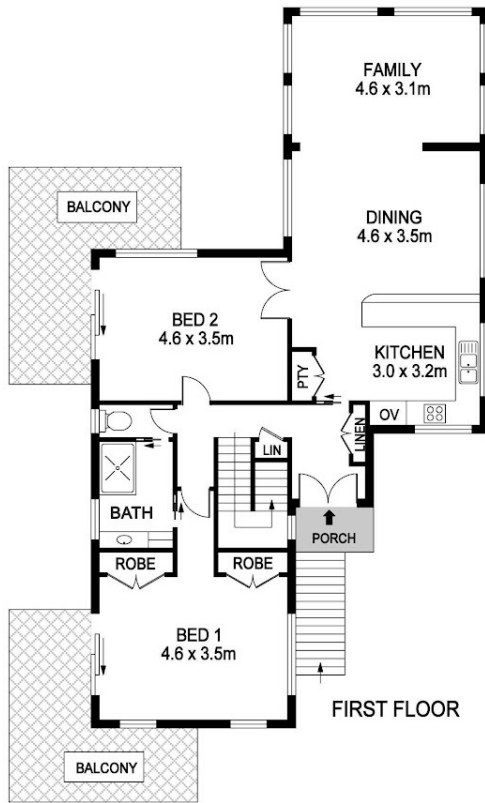
PRICE:  
\$565,000

OPEN FOR INSPECTION:  
N/A



**Jenny - OLD Magill**  
**0490403052**

[jennymagill@atrealty.com.au](mailto:jennymagill@atrealty.com.au)  
[jennymagill.com.au](http://jennymagill.com.au)



203 Pacific Dr, Port Macquarie

GROUND FL : 102.1m<sup>2</sup>  
 FIRST FL : 101.8m<sup>2</sup>  
 CARPORT : 21.7m<sup>2</sup>  
 BALCONY : 29.1m<sup>2</sup>

**DISCLAIMER**

PLANS SHOWN ARE FOR MARKETING PURPOSES ONLY, ALL DIMENSIONS ARE APPROXIMATE AND NOT TO SCALE. THEY ARE SUBJECT TO ERRORS AND INACCURACIES AND NO LIABILITY WILL BE ACCEPTED. INTERESTED PARTIES SHOULD MAKE THEIR OWN INQUIRES.



Disclaimer: Please note this floor plan is for marketing purposes and is to be used as a guide only. All dimensions are estimates only and may not be exact measurements.

Jenny - OLD Magill  
 0490403052  
 jennymagill@atrealty.com.au  
 jennymagill.com.au

