

# FOR SALE

## DREAM HOME IN A DREAM LOCATION

This exquisitely designed home has been meticulously pieced together with comfort and practicality in mind while encompassing style and sophistication. Spread over a spacious and impressive floor plan, the vibrant interiors carry you effortlessly from room to room. With quality features throughout, this home is sure to cater to your family's needs.

### Features Include:

- Three generously proportioned bedrooms all with built in robes
- Solid timber feature wall to front bedroom
- The master suite is enormous & includes an ensuite with a separate toilet, walk in robe & a walk through robe behind the bed-
- Open plan family & dining room
- Theatre room
- Well appointed kitchen with ample cupboard & bench space
- Walk in pantry
- 1200mm Gas cooktop
- Pendant lighting
- Breakfast bar overlooking the alfresco
- Modern bathroom includes bathtub
- Separate toilet
- Internal storage throughout
- Laundry has been fitted out to include extra storage
- Attic storage with 12m attic ladder
- High ceilings
- Ducted air conditioning
- Downlights
- Security surveillance cameras
- Upgraded alarm system on doors & windows
- Timber flooring to common areas
- Back doors open up to combine indoor / outdoor living
- Alfresco with timber decking
- Fantastic sized backyard
- Manicured gardens to both front & back
- Paved driveway
- Side access

3 BED | 2 BATH | 2 CAR

### PRICE:

\$730,000 - \$760,000

### OPEN FOR INSPECTION:

N/A

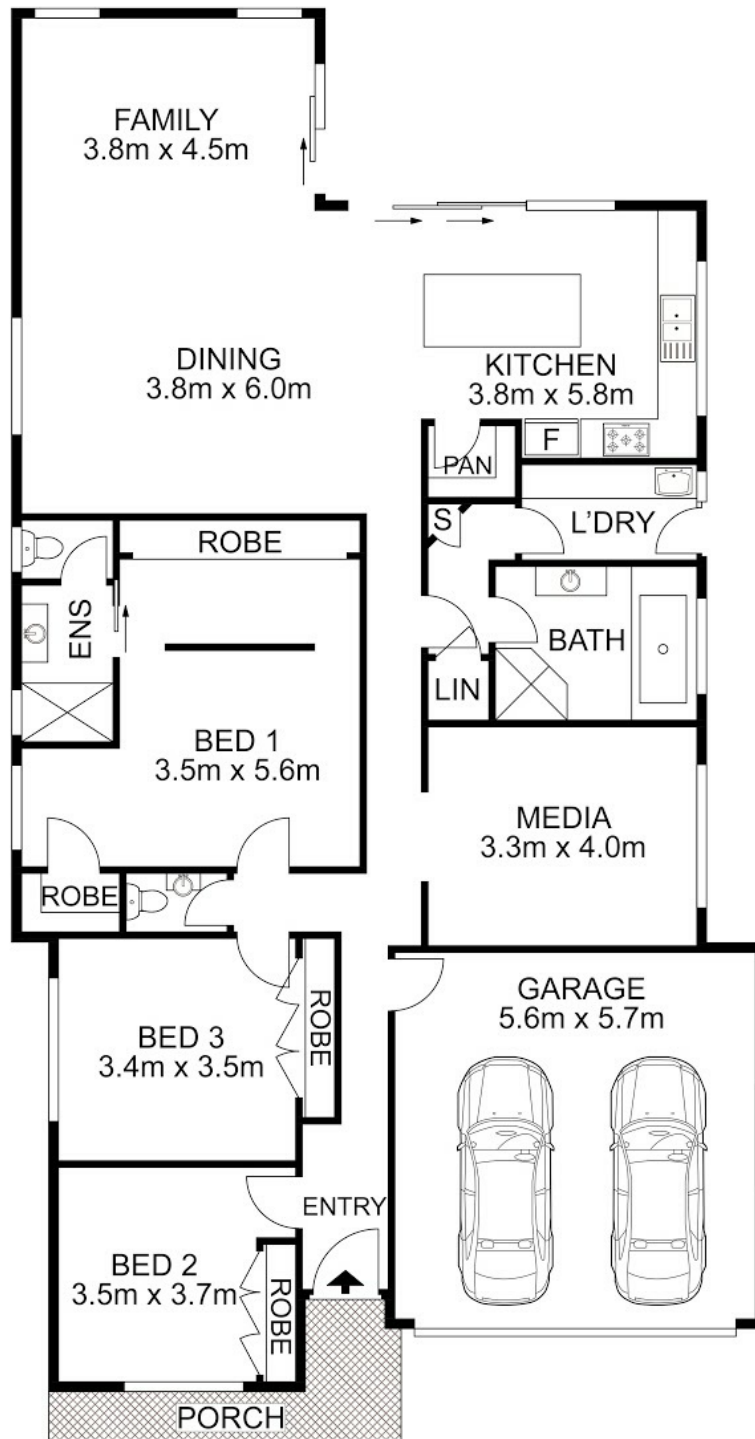


**Bobby Reynolds**

**0432173566**

bobby.reynolds@atrealty.com.au

[agencycentralwilton.com.au](http://agencycentralwilton.com.au)



Disclaimer: Please note this floor plan is for marketing purposes and is to be used as a guide only. All dimensions are estimates only and may not be exact measurements.

15 Myers Way, Wilton

**Bobby Reynolds** All measurements are approximate • Drawn for marketing purposes only  
 0432173566  
 bobby.reynolds@atrealty.com.au  
[agencycentralwilton.com.au](http://agencycentralwilton.com.au)

