



SOLD

SOLID HOME WITH SEPARATE ACCOMMODATION PLUS WORKSHOP AND FIVE MINUTES TO THE BEACH!

What an amazing lifestyle! Perfectly placed for coastal living, a six minute drive from the beach, Lighthouse Beach Shopping Center, public and private schools.

Set within a quiet, Lighthouse Beach location, this home is ready for a large family with lots of potential for all types of living arrangements. Perhaps you have older children wanting separation from the rest of the family, grandparents, guest accommodation or home office/studio or to run your home based business from the separate quarters. This property is situated in one of Port Macquarie's most highly sought after precincts.

Encompassing a double brick construction, with oversized bedrooms, elevation and sea breezes that flow effortlessly throughout the living spaces.

- Light-filled living/dining perfect for catching the sea breeze
- Stunning Black butt flooring
- Spacious Tasmanian oak kitchen with plenty of cupboard and bench space
- Generous master bedroom with walk in robe, ensuite and extra space to use as a study nook, reading area or nursery
- Three additional double bedrooms in the main part of the house, two with built-in robes and one currently used as an office
- Fifth bedroom is situated at the rear of the home and has separate access which is perfect for guest quarters, teenager retreat, parents retreat, home office/ studio or to run a business (STCA) ie: hairdressers, massage, consultant rooms etc. Includes ensuite bathroom, built in robe, wet bar, rumpus room, ceiling fans and beautiful Tasmanian oak flooring
- Huge Family bathroom with separate bath and shower
- Remote double garage with internal access plus driveway parking
- 24 Panel 6.6kw solar system (owners haven't had a bill in the last 2 years)
- 3 Panel 400 litre solar hot water system
- Brand new carpet & sheer curtains
- High ceilings
- Four toilets and three bathrooms

5 BED | 3 BATH | 2 CAR

PRICE:
\$880,000

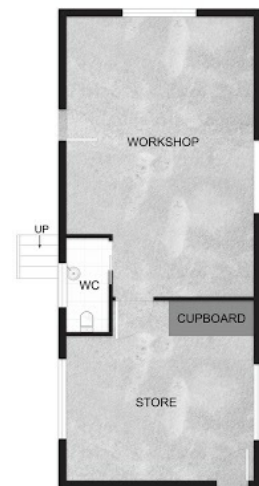
OPEN FOR INSPECTION:
N/A



Jenny - OLD Magill
0490403052
jennymagill@atrealty.com.au
jennymagill.com.au



SITE PLAN



Disclaimer: Please note this floor plan is for marketing purposes and is to be used as a guide only. All dimensions are estimates only and may not be exact measurements.