



**SOLD**

## NEAR NEW HOME - UNDER OFFER - MORE SIMILAR WARRANE HOMES COMING SOON!

We have now sold 19 house and land packages in the last few months with eight house and land packages remaining as at 28th December, only 3 days remaining to access full \$45,000 Homebuilder grant! Further savings can be made, ask Ben for full details.

Perfect Home or Investment opportunity - privacy and close to everything - perfect for Investors, first home buyers or downsizers.

This near new home is located in popular Warrane, 3 minutes to Eastlands, 8 minutes to Hobart and 10 minutes to the airport!

The home features a very private fully fenced backyard, 3 bedrooms with built-ins (Master with walk in robe), near new appliances including reverse cycle Daikin heat pump, oven, hotplates, dishwasher and rangehood with modern flooring and window furnishings throughout. Contemporary in design, the home has been well positioned to make the most of the morning, midday and afternoon sun ensuring a light and bright feeling within the home throughout the day. The land component of the property is approximately 445m<sup>2</sup>, which is larger than a typical Strata property in the area, with no active strata or annual fees.

Privately positioned off street down a private driveway, your privacy is assured with a garage offering internal access and an additional off street park.

Home efficiency is well taken care of with Insulated walls and ceilings, reverse cycle heat pump and heat pump hot water system.

Please contact Ben Palmer from @realty for a private inspection.

**3 BED | 1 BATH | 1 CAR**

**PRICE:**  
\$433,500

**OPEN FOR INSPECTION:**  
N/A

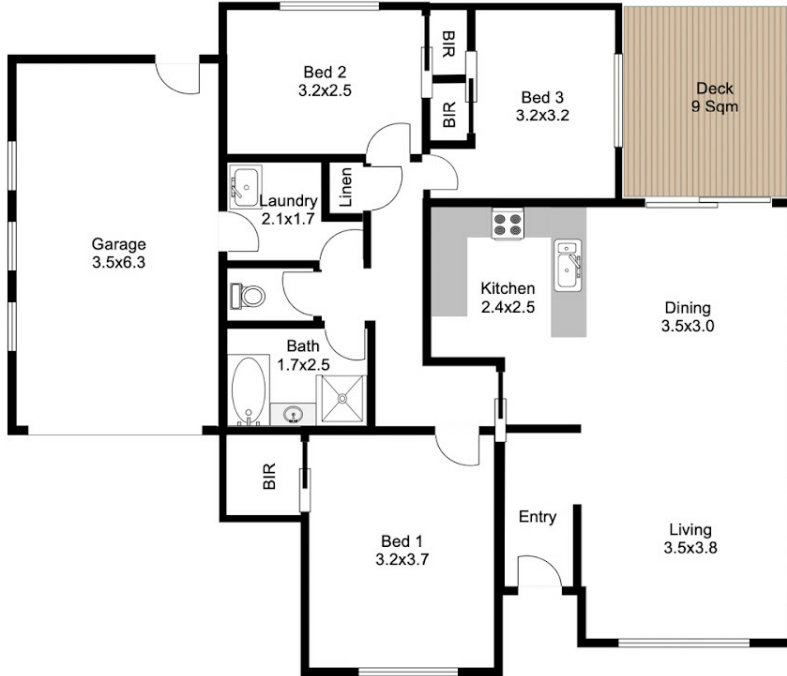


**Ben Palmer**  
**0417556731**  
benpalmer@atrealty.com.au  
[hobarthomes.com.au](http://hobarthomes.com.au)



**2/32 Erebus St, Warrane**

Floor Space: 95 Sqm  
Garage: 22 Sqm  
Deck: 9 Sqm  
**Total Useable Area: 126 Sqm**



Please note: measurements are approximate and are for reference only.

Disclaimer: Please note this floor plan is for marketing purposes and is to be used as a guide only. All dimensions are estimates only and may not be exact measurements.

