



**SOLD**

## PACIFIC PINES ENTERTAINER WITH FANTASTIC VIEWS

Perched on the road to view 360, is this one of a kind home which has been cleverly designed with both upper and lower verandas to take in the surrounding outlooks of both the treed reserve behind and spectacular views looking out to the hinterland in the west. The recent internal renovations make this home a joy to live in, with a new galley kitchen looking out to the serenity of the trees behind and within easy access of the lower veranda where you can entertain looking out to sunsets over the mountains. The main bedroom with walk in robe and ensuite allows for morning escapes for coffee with a view. Upstairs has been designed for the family with three good size bedrooms, kids retreat and bathroom as well as access to the upper deck for bedrooms 2 and 3. The pool area is surrounded by leafy gardens and the reserve behind providing privacy and a serenity. This home offers all the benefits of living near all amenities and only minutes to the M1, while being surrounded by nature offering full privacy, the best of both worlds.

### Features include

- 4 bedrooms.
- 2 bathrooms.
- 1 separate guest powder room.
- Separate lounge and kids retreat.
- Modern renovated galley kitchen next to dining and decks for easy entertaining.
- Family room beside kitchen.
- New carpets throughout.
- Proper double garage.
- 762m2 block.
- Shade sails over the drive to provide 2 extra covered car spaces.
- 6.6kw German Solarwatt glass panels connected to a 5kw Fronius Inverter.
- Private pool with timber decking, overlooking gardens and reserve.
- Under house storage.
- Walk to Jubilee Primary with many other school choices close at hand.
- Spoilt for shopping choices all within minutes.
- A true family home.

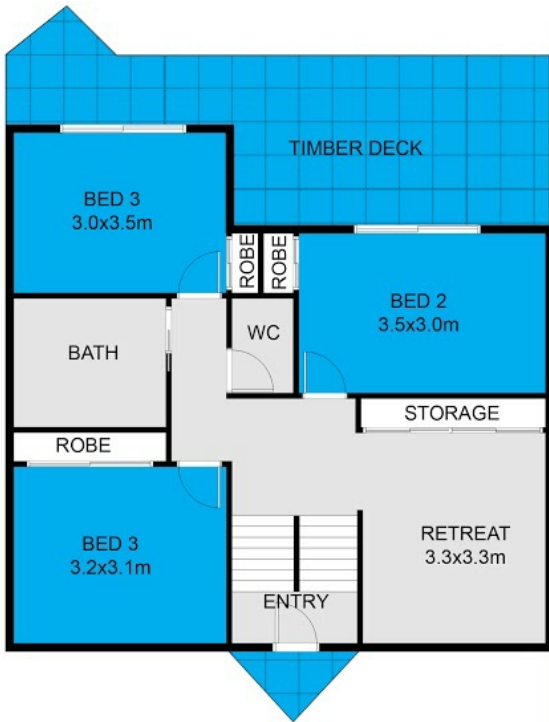
4 BED | 2 BATH | 4 CAR

PRICE:  
\$660,000

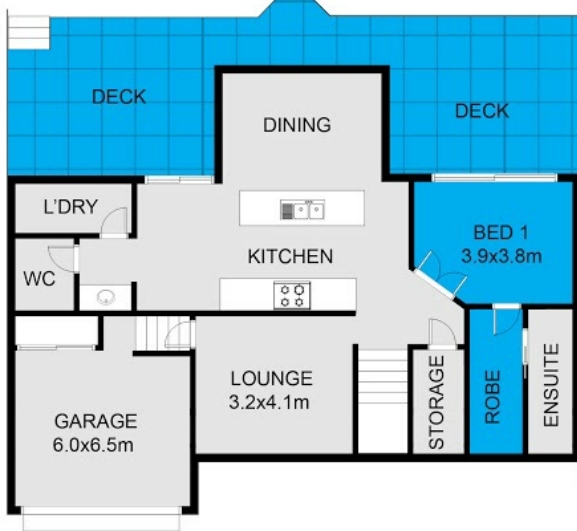
OPEN FOR INSPECTION:  
N/A



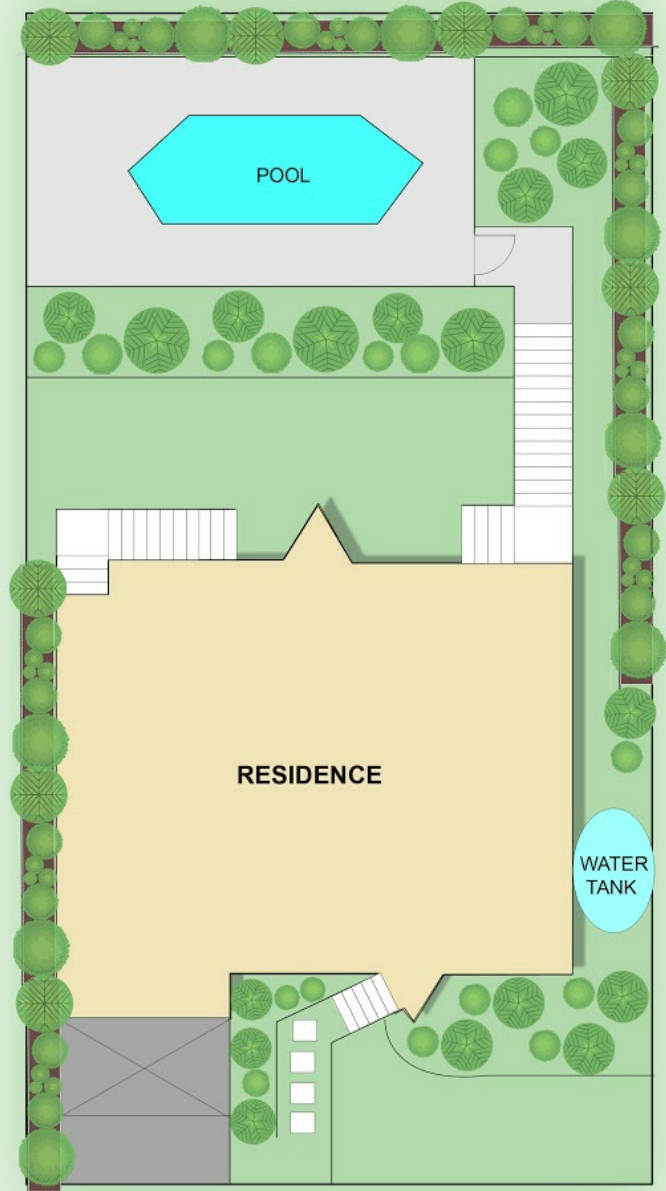
**Tony Brown**  
**0418961500**  
tonybrown@atrealty.com.au  
[www.atrealty.com.au](http://www.atrealty.com.au)



UPPER FLOOR PLAN



LOWER FLOOR PLAN



SITE PLAN

Disclaimer: Please note this floor plan is for marketing purposes and is to be used as a guide only. All dimensions are estimates only and may not be exact measurements.

This floor plan including furniture, fixture measurements and dimensions are approximate and for illustrative purposes only. Boxbrownie.com gives no guarantee, warranty or representation as to the accuracy and layout. All enquiries must be directed to the agent, vendor or party representing this floor plan.