



SOLD

CHARMING RESIDENCE IN CAMBRIDGE SCHOOL ZONE

Family friendly locale and convenient lifestyle are irresistibly combined with this three bedroom proposition alluring both families and experienced investors alike.

Accommodating floor plan provides three spacious bedrooms with built-in-robos, master with ensuite plus generous laundry and ample storage through-out. Large separate living room ideal for families, open plan kitchen and meals area flows to outdoor haven perfect for relaxing or entertaining guests.

An appealing brick facade highlights landscaped yards, double garage and a well-nurtured home for comfort and easy-living in the midst of family-focused surrounds.

An address to appreciate, a property that provides space and scope in an enviable position with Cambridge Primary School zone and close proximity to Pacific Werribee, shops, schools, bus stops and an array of parklands.

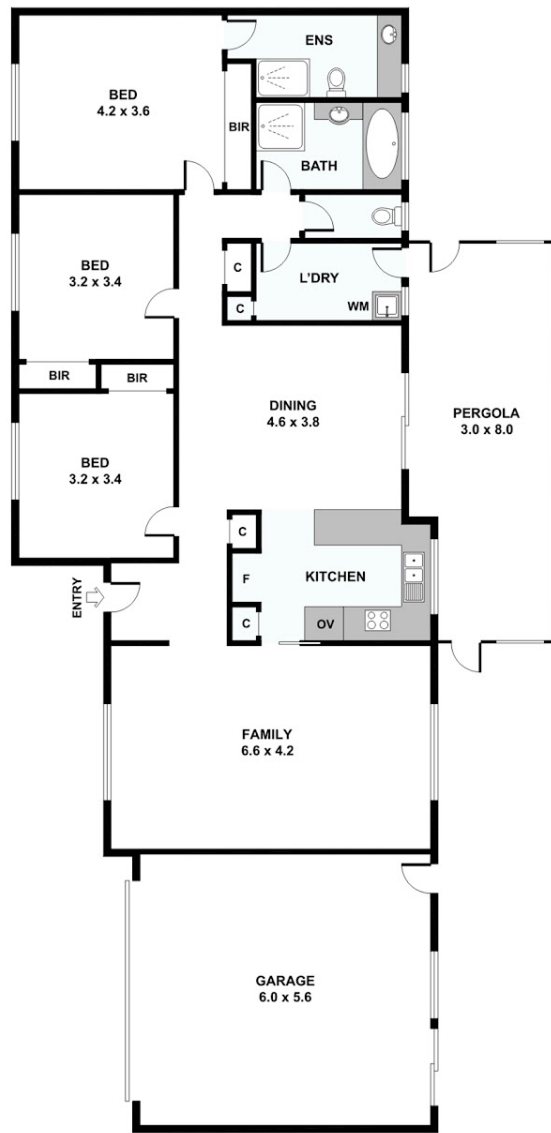
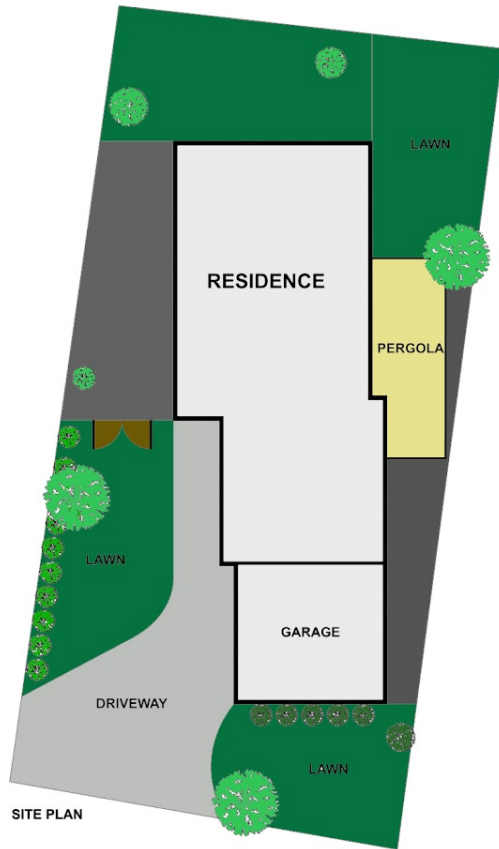
3 BED | 2 BATH | 2 CAR

PRICE:
\$545,000

OPEN FOR INSPECTION:
N/A



Samuel Hogan
0401315234
samuel@atrealty.com.au
www.atrealty.com.au



Disclaimer: Please note this floor plan is for marketing purposes and is to be used as a guide only. All dimensions are estimates only and may not be exact measurements.