


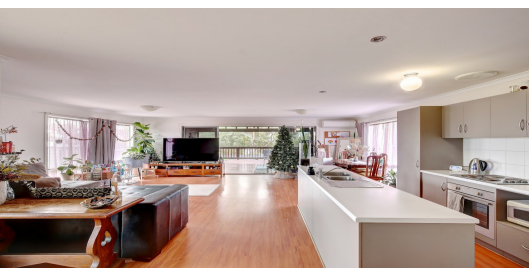


Sold

3  | 1  | 4 

18 WATTLE STREET, MURRAY BRIDGE, SA, 5253

ANSELL
Real Estate



A PERFECT INVESTMENT OR LOW MAINTENANCE HOME

Set on an easily maintained allotment of 626m² approx this low maintenance, tenanted home is the perfect investment property or home.

A large deck to the back of the home overlooking the backyard is great for entertaining and relaxing whilst inside provides a modern, open plan environment.

What we love about this property:

- Large deck for entertaining
- Low maintenance home and gardens
- Modern interior
- Already leased at \$250 per week to a long term tenant

For more information on this property please contact Callum Ansell on 0468 671 665 or callum@ansellrealestate.com.au

RLA 269823

PRICE:
\$237,500


OPEN FOR INSPECTION:
N/A



Callum Ansell // 0468671665

callum@ansellrealestate.com.au // www.ansellrealestate.com.au // RLA 305012

Sold

3  | 1  | 4 

ANSELL

Real Estate



18 WATTLE STREET, MURRAY BRIDGE, SA, 5253

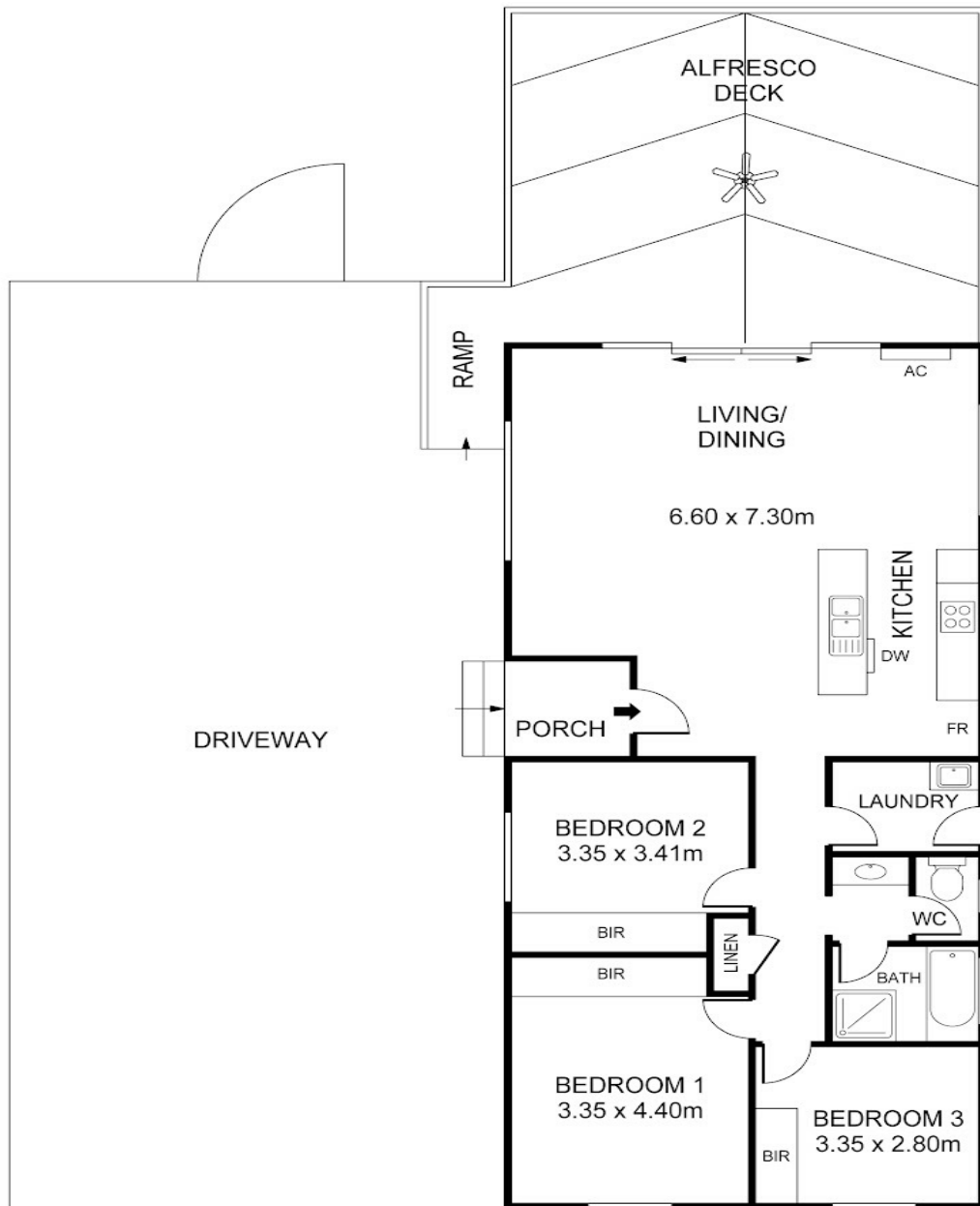


SHED

APPROXIMATE AREAS

LIVING	99 Sq M
ALFRESCO DECK	39 Sq M
PORCH	3 Sq M
TOTAL	141 Sq M

LAWN



18 WATTLE STREET, MURRAY BRIDGE



Callum Ansell // 0468671665

callum@ansellrealestate.com.au // www.ansellrealestate.com.au // RLA 305012