



**SOLD**

## FAMILY HOME WITH LEAFY ASPECTS

THE IMMACULATELY PRESENTED LOWSET FAMILY HOME SIDED BY SINGLE STORY HOMES WILL GIVE YOU A SENSE OF SPACIOUSNESS AND PRIVACY. OFFERING 4 BEDROOMS, ALL WITH DUCTED AIR, TWO LIVING SPACES AND AN ENORMOUS ALFRESCO AREA. DEFINITELY DESIGNED WITH THE FAMILY IN MIND. POSITIONED IN WALKING DISTANCE FROM SEVERAL PARKS AND WALKING TRACKS AND MINUTES TO THE WYNNUM ESPLANDE WHERE YOU CAN WALK FOR KILOMETERS ALONG THE FORESHORE, LINED WITH CAFES, RESTUARANTS. WHAT AN OPPORTUNITY!! THIS ONE WON'T LAST LONG FOR SURE !!

### NOW HERE'S THE DEAL

- Master with walk-in robe and ensuite
  - Built-in robes to remaining bedrooms
  - Generous sized kitchen featuring a spacious bench top
  - Ducted Air Conditioning for climate controlled living
  - Well appointed bathrooms
  - Solar Power for energy efficiency
  - Spacious media room and a naturally lit open plan living areas
  - Sliding door open out to combine large undercover entertainment area overlooking a good size backyard and leafy aspect - perfect for entertaining friends and family.
  - Double remote lock-up garage with internal access
  - Express train to the CBD
  - Minutes to Gateway Motorway
- MAKE SURE THIS IS ON YOUR LIST TO INSPECT SATURDAY

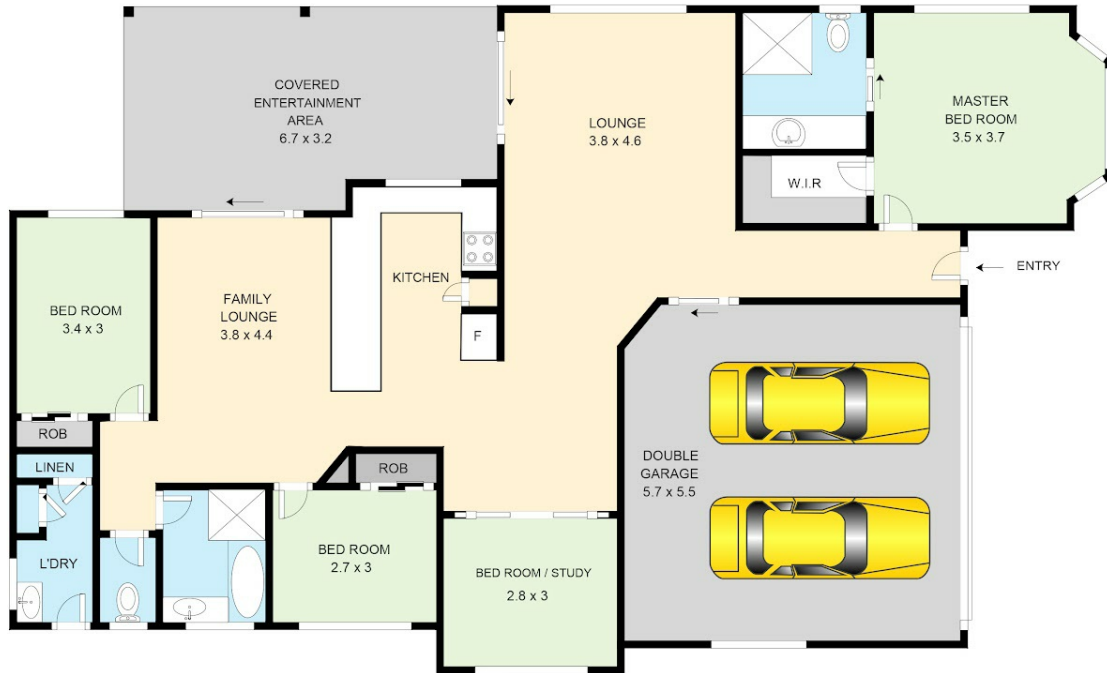
**4 BED | 2 BATH | 2 CAR**

**PRICE:**  
**\$635,000**

**OPEN FOR INSPECTION:**  
**N/A**



**Cherelle Taylor**  
**0408792236**  
cherelle@atrealty.com.au  
[www.atrealty.com.au](http://www.atrealty.com.au)



Scale in metres. Indicative only. Dimensions are approximate. All information contained herein is gathered from sources we believe to be reliable. However, we cannot guarantee its accuracy and interested persons should rely on their own enquiries.

61 Amanda Street, Wynnum West

Disclaimer: Please note this floor plan is for marketing purposes and is to be used as a guide only. All dimensions are estimates only and may not be exact measurements.