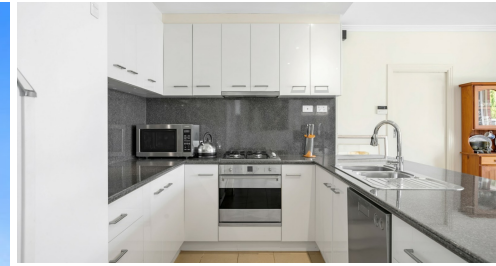


1/34 THE PARKWAY, KLEMZIG, SA, 5087



SOLD

PRICE REDUCED! MODERN FREE STANDING COURTYARD HOME, STREET FRONTAGE, HUGE LIVING AREA

With an imposing street appeal this free-standing, street frontage courtyard home is ideally located, just 8 kms from the city, yet so close to leafy open spaces and all of the conveniences that one would want.

The excellent accommodation consists of 2 bedrooms, main bedroom with bay window, built-in robes and direct bathroom access, large 2-way bathroom with roomy corner bath, stunning open plan kitchen with stainless steel appliances, huge living/dining/family room (10.4m x 5.4m), 2nd toilet, and garage under the main roof with direct entry and remote control door. Other features include 2.7m ceilings and ducted reverse cycle air-conditioning.

The block is an easily maintained 300 m2 (approx) with a valuable wide frontage and a lovely private rear yard that flows directly from the living areas.

The Parkway is a great location just 8km or so from the city, with T K Shutter Reserve just behind and just moments from the Linear Reserve, the bus, schools local shopping and more.

A new exciting lifestyle awaits!

RLA 269823

2 BED | 2 BATH | 2 CAR

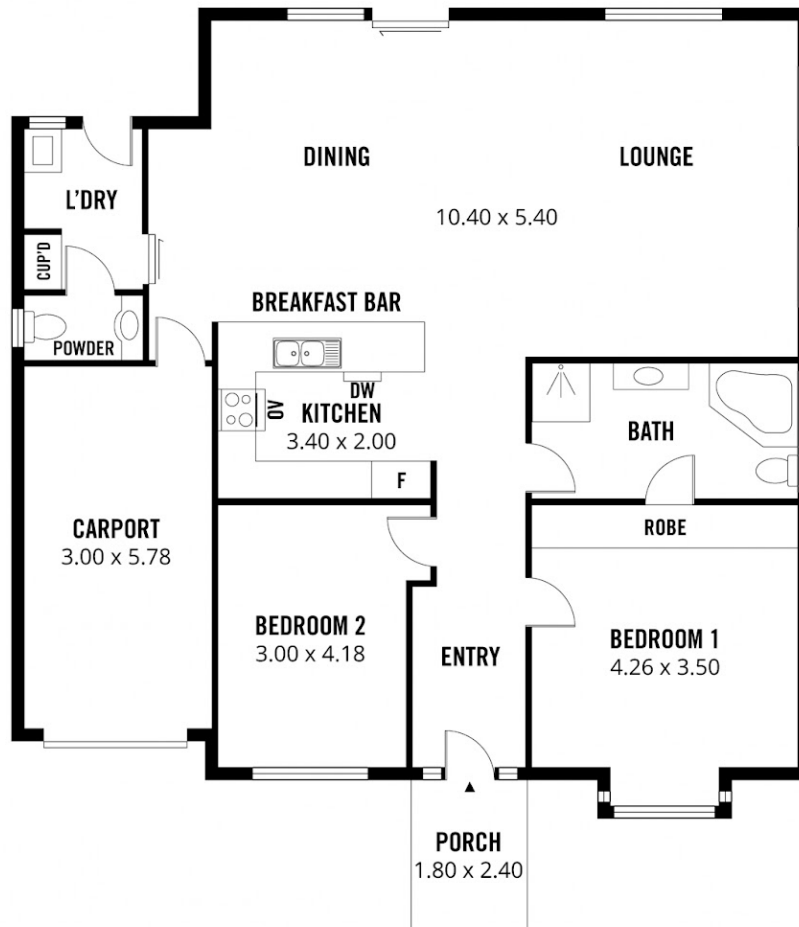
PRICE:
\$447,000

OPEN FOR INSPECTION:
N/A



Simon Tait
0419853945
simon@taitre.com.au
taitre.com.au
RLA: 269823

SHED
1.50 x 1.40



146m²

TOTAL

123m²

Lounge

17m²

Carport

4m²

Porch

2m²

Shed

Scale in metres. This drawing is for illustration purposes only. All measurements are approximate and details intended to be relied upon should be independently verified.

Produced by **The Fotobase Group**

Disclaimer: Please note this floor plan is for marketing purposes and is to be used as a guide only. All dimensions are estimates only and may not be exact measurements.