



SOLD

LIFESTYLE ACREAGE LIVING WITH WATER & CITY VIEWS!

Presenting to the market an opportunity to purchase three hectares (7.5 acres) of lifestyle so close to all of the creature comforts of city life!

This immaculate family home is set over two generous levels offering several living areas, a separate home office, multiple outdoor entertaining areas, sparkling inground swimming pool, 2 large sheds, mountain and water views primly located in the highly sought after Lake View Ridge Estate.

From the moment you arrive at this address you are drawn in by the double door entry and impressive foyer. To the right you will find the home office conveniently located by the front door for easy access featuring floor to ceiling windows, further inside you will discover the multitude of living areas on offer with the open plan entertainer's kitchen with stone bench tops, 5 burner gas stove and large pantry, beautiful bi-fold doors lead seamlessly to the oversized alfresco entertaining area that overlook the rolling green grassy hills and take in the city and water views. Whether it's first thing in the morning with a cuppa or the wind down at the end of the day with a glass of bubbly this is an area that will get a lot of use!

Back inside and upstairs you will discover the air-conditioned oversized master suite with balcony, once again enjoying those stunning views, walk in robe, ensuite complete with spa bath, double shower heads and double vanity and complete with your very own bidet. The other three bedrooms all with built in robes, ceiling fans and air-conditioning share the family bathroom on this level, separated by the kids retreat!

This home has too many fabulous features to write about... you will need to inspect to appreciate the quality and the extras on offer here... moving outside...

Down from the home with driveway access is two large sheds ideal for the car enthusiast or hobbyist. The property is also home to a substantial size dam, a plethora of fruit trees – Lemon, Limes, Mango, Pomegranate, Grumichama, Passionfruit, Mulberries and Fig Trees, Fire Pit and chicken coop, several tanks totaling 60,000L of water.

Location is key, positioned in a quiet cul-de-sac at the top of a hill with views and decent usable land this opportunity doesn't present itself often, don't delay call Natalie today on 0419689309 to

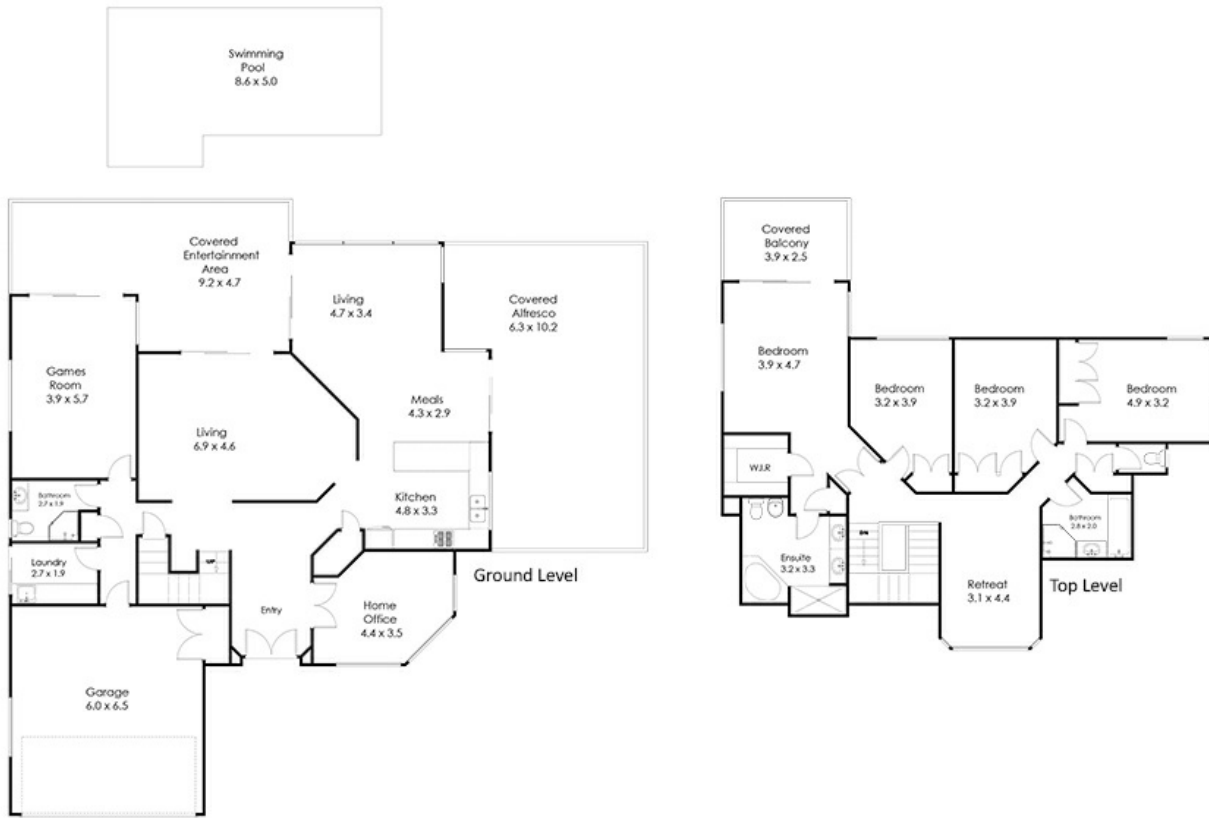
4 BED | 3 BATH | 4 CAR

PRICE:
\$1,200,000

OPEN FOR INSPECTION:
N/A

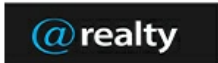


Natalie Johnston
0419689309
natalie@atrealty.com.au
[Natalieatrealty](#)



10 Andrew Clarke Road Whiteside 4503

Whilst every attempt has been made to ensure the accuracy of the floor plan contained here, measurements of doors, windows rooms and any other items and structures are approximate and no responsibility is taken for any error, omission or mis-statement. Bathroom and kitchen fittings, cupboards and door types and laundry appliances and windows are tokens and approximate the actual fitting installed.
 This plan is for illustrative purposes and should be used as such by any prospective buyer.
 Plan drawn by Eagle Eye Photography Service, www.eagleeyehq.com.au Copyright 2020.
 All rights reserved.
 No reproduction without license, contact photographer for more information.



Disclaimer: Please note this floor plan is for marketing purposes and is to be used as a guide only. All dimensions are estimates only and may not be exact measurements.

