



SOLD

QUALITY FAMILY HOME WITH DUAL LIVING

Undoubtedly one of Bayswater's finest properties, this quality family residence sets itself apart with its uncompromised quality, floorplan flexibility and intelligent design utilizing a clever dual living layout with 2 kitchens for extraordinary family comfort.

A luxurious family sanctuary of grand proportions that is as functional as it is beautiful, the home's meticulously-detailed interior boasts 5 generous sized bedrooms all featuring double built in robes, with the master bedroom featuring access to a picturesque balcony with breath-taking views, generous size walk in robe and a recently renovated ensuite featuring a shower, bath, toilet & double hand basin, plus a spacious light filled open plan kitchen, lounge & dining area as you enter this amazing property complete the property inside.

- Double car garage
- Gas ducted heating
- Outdoor undercover entertainers area
- Generous sized block of 844sqm (approx)
- Walking distance to schools, shops, parks & kindergarten

If you are looking for a truly unique home with plenty of space & unparalleled quality in an excellent location, you cannot go past this one!

- Private Inspections only, please contact us to arrange a time.

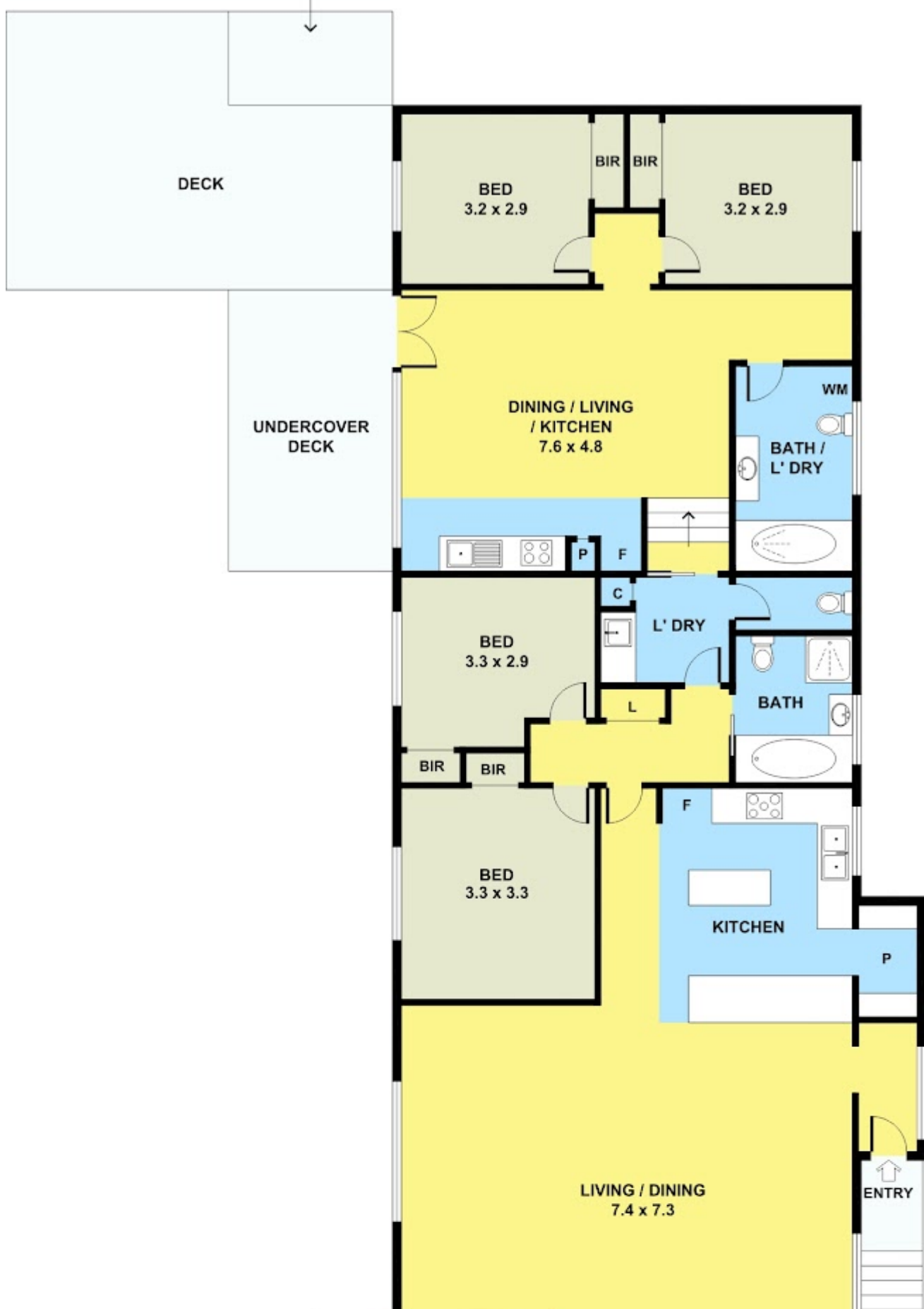
5 BED | 3 BATH | 2 CAR

PRICE:
\$957,500

OPEN FOR INSPECTION:
N/A

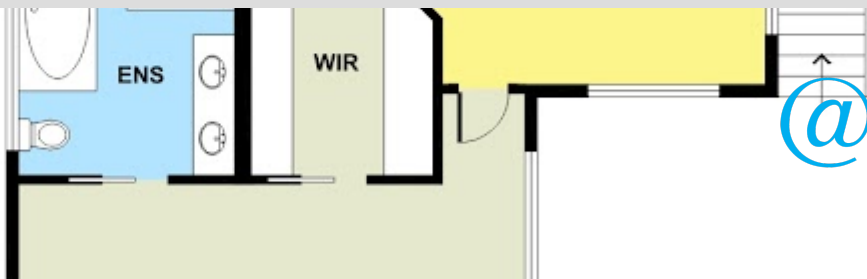


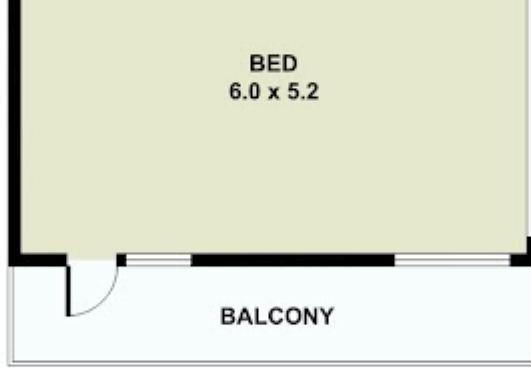
George Shehata
0452460733
george.shehata@atrealty.com.au
www.atrealty.com.au



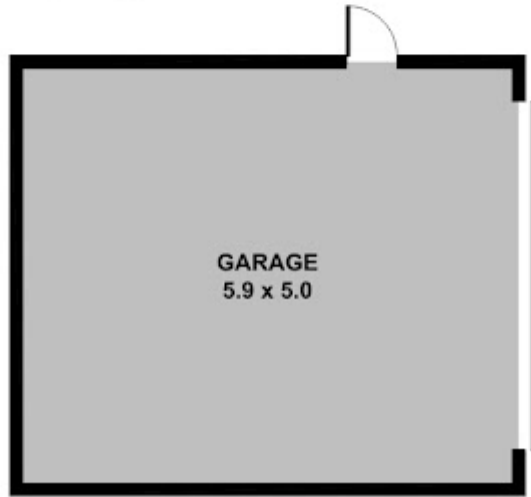
Disclaimer: Please note this floor plan is for marketing purposes and is to be used as a guide only. All dimensions are estimates only and may not be exact measurements.

George Shehata
 0452460733
 george.shehata@atrealty.com.au
 www.atrealty.com.au





FIRST FLOOR



GROUND FLOOR