



**SOLD**

## BRING THE CARAVAN, STUNNING HOME IN DREAM LOCATION

Wow, this immaculate Highbury Homes double storey residence is only three houses from the beachfront in this exclusive and tightly held pocket of Secret Harbour and is the epitome of quality lifestyle living.

The upper storey features a large open plan living/activity room with ocean views and includes a kitchenette, powder room and spacious balcony with glorious ocean views. This space could easily be converted to a guest bedroom or luxurious first floor master bedroom suite.

The Alfresco area features a fabulous outside kitchen with a built in BBQ, sink with hot & cold water, exhaust fan, soft close cabinetry and granite benchtop.

Designed to accommodate a large caravan or boat, there is access to a covered hardstand to the rear of the garage with high ceiling for additional clearance.

Accommodation briefly comprises;

- \* Large home office/study located at the front of the property, potential nursery/4th double bedroom
- \* Gorgeous welcoming entrance hallway, with generous under stairs storage
- \* Spacious theatre room with recessed ceiling, quality carpet and window treatments
- \* Immaculately presented open plan casual living area with high ceilings, spacious living areas and direct access to alfresco
- \* Superb chefs kitchen with heaps of cabinet space and granite benchtops
- \* 2 further queen-sized bedrooms with plenty of robe space
- \* Modern family bathroom and large laundry with ample linen storage

This property features exceptional power and water saving measures such as;

- \* 1.5kw solar panel system, 7 panels
- \* Double insulation
- \* Temperzone 18KW fully ducted reverse cycle air conditioning with 11 outlets
- \* Automatic roller shutters on west side of house
- \* French doors and passage doors throughout to provide additional privacy and control of cooling/heating

**3 BED | 2 BATH | 2 CAR**

**PRICE:**  
**\$790,000**

**OPEN FOR INSPECTION:**  
**N/A**



**Lisa Drylie**  
**0433048512**

[lisadrylie@atrealty.com.au](mailto:lisadrylie@atrealty.com.au)

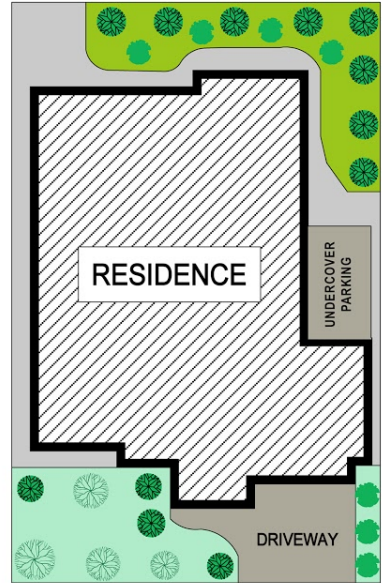
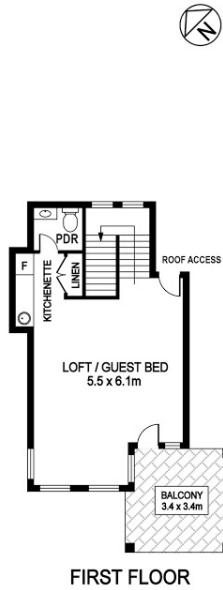
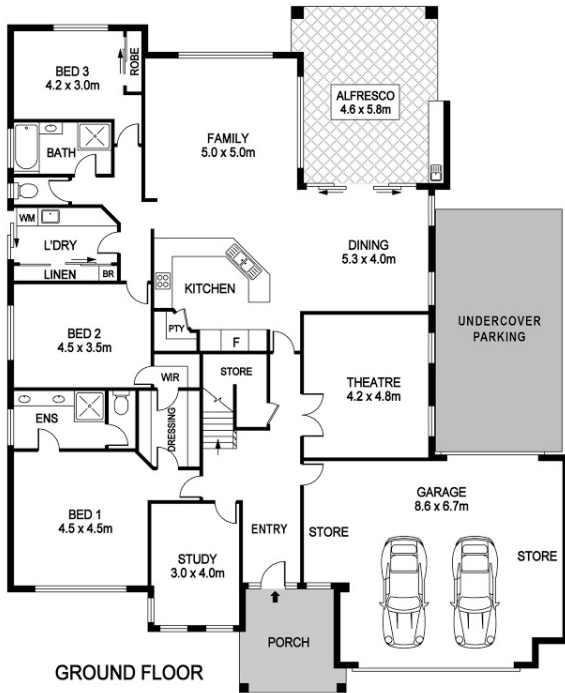
[www.lisadrylierealestate.com](http://www.lisadrylierealestate.com)

# 8 Margaret Road SECRET HARBOUR

Block Size 640m<sup>2</sup> | 4 Bedrooms | 2 Bathrooms | 3 W.C | 2 Car

Lisa Drylie | 0433 048 512

Internal 270m<sup>2</sup> | External 106m<sup>2</sup> | Total 376m<sup>2</sup>



REAL ESTATE FLOOR PLANS | [houseguru.com.au](http://houseguru.com.au)

Whilst every attempt has been made to ensure the accuracy of the floor plan contained here, measurements of doors, windows, rooms and any other items are approximate and no responsibility is taken for error, omission or mis-statement. This plan is for illustrative purposes only and should only be used as such by any prospective purchaser. The services systems and appliances shown have not been tested and no guarantee as to their operability or efficiency can be given.

Disclaimer: Please note this floor plan is for marketing purposes and is to be used as a guide only. All dimensions are estimates only and may not be exact measurements.