

**SOLD**

## LUXURIOUS LOW-MAINTENANCE LIVING IN FORSYTH PARK

Sure to set hearts racing is this gorgeous home has all the bells and whistles and is positioned perfectly with everything at your fingertips; Westbourne Grammar, Al-Taqwa college, Truganina primary schools, local shops, Forsyth park medical centres and child care, Wyndham village shopping centre, Williams landing train station & Tarneit train station with an easy access to freeway and just 19km approx...from Melbourne CBD.

Presenting:

- Three fitted bedrooms, master with full ensuite and walk in robe
- Two other bedrooms with built in robes
- Second bathroom
- Modern kitchen with top quality 900 mm stainless steel appliances with tile splashback, pantry, dishwasher, cupboard space etc. overlooking the huge family and meals area.
- Spacious tiled family area leads out to a low maintenance backyard.
- Ducted heating & split system cooling
- Single remote control lock up garage with internal access.

This home is rented currently month to month and returning \$370 per week and open for home occupiers and smart investors to secure their place in highly popular Forsyth Park estate in Truganina.

Contact Joseph Hanna on 0423 966 320 to secure this property today!

**3 BED | 2 BATH | 2 CAR**

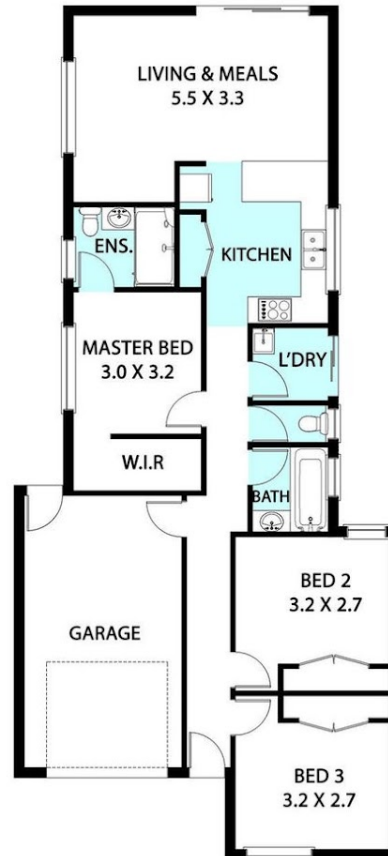
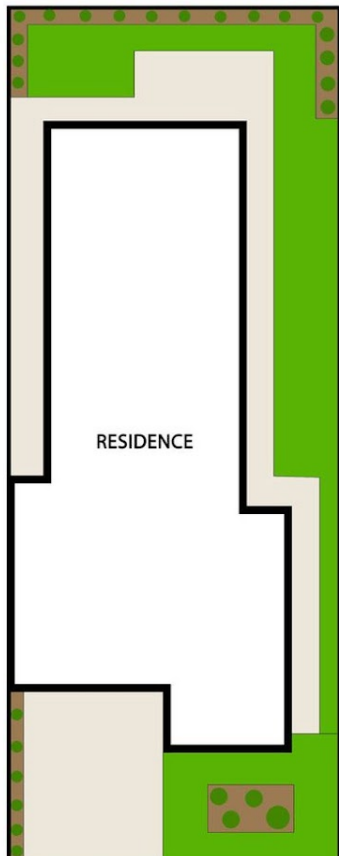
**PRICE:**  
\$462,000

**OPEN FOR INSPECTION:**  
N/A



**Joseph Hanna**  
**0423966320**  
joseph@atrealty.com.au  
[www.atrealty.com.au](http://www.atrealty.com.au)

# 4 Elsham Grove, Truganina



PLEASE NOTE: ALL STATED DIMENSIONS ARE APPROXIMATE ONLY. PROSPECTIVE BUYERS ARE ADVISED TO MAKE THEIR OWN INQUIRIES.

Disclaimer: Please note this floor plan is for marketing purposes and is to be used as a guide only. All dimensions are estimates only and may not be exact measurements.