



**SOLD**

## LOVELY SPACIOUS HOME IN AWARD WINNING PARK WITH VERY LARGE WORKSHOP/ANNEX.

Open plan with 3 bedrooms, bathroom and second toilet, laundry and air conditioning throughout.

Large open plan kitchen, dining and lounge, raked ceilings with fans, airconditioned and tiled. All bedrooms have fans, air conditioning and built-in wardrobes.

Huge north facing covered entertaining deck 9 x 3 metres.

Outside there is a large lawn area with a dog fence along with a rain water tank nearby to the huge fully lined annex/workshop.6.2 x9 metres with lighting and power.

Two large double carports with cover for 3 vehicles and high enough for an R V or caravan if necessary.

Central location in the R V park and close to all amenities.

The R V Park boasts a swimming pool, Clubhouse, Men's shed, commercial kitchen, 300 acres to explore wetlands, 9 hole Golf course,8 Ball Pool Hall, Art and craft studio, undercover BBQ areas, Gym area and Dance floor along with a games room and library for the free use of al residents.

With no stamp duty, no incoming or exit fees, no Council rates, sewage or rubbish fees, no Body Corporate this is the next best place to paradise!.

Call for more information or better still book a viewing as this will not last long with a motivated vendor.

**3 BED | 1 BATH | 2 CAR**

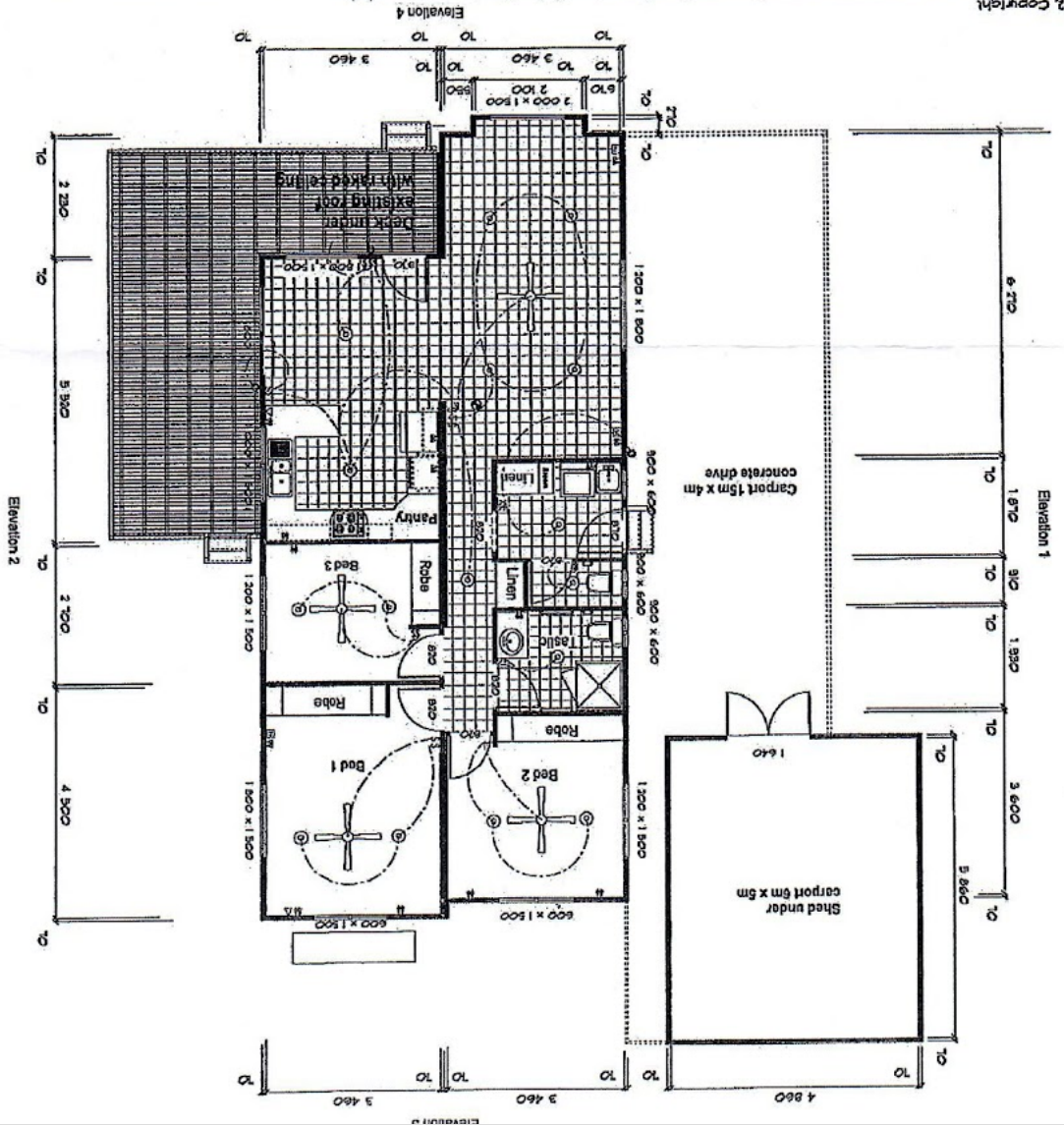
**PRICE:**  
**\$292,000**

**OPEN FOR INSPECTION:**  
**N/A**



**Murgha Mack**  
**0414666970**  
murghamack@atrealty.com.au  
[www.atrealty.com.au](http://www.atrealty.com.au)

12. Copyright - These drawings are not to be reproduced in part or whole without express permission.  
 East Coast Village Homes Pty Ltd  
 40 Enterprise Ave, Expo Park, Tweed Heads South NSW 2486  
 Tel: 07 5524 5443  
 Fax: 07 5524 5329  
 Mob: 0418755690/0418727103  
 Proposed Home for:  
 Site 75  
 CMCA Village  
 Casino NSW  
 Date: 08/11/08  
 Scale: 1:125



Disclaimer: Please note this floor plan is for marketing purposes and is to be used as a guide only. All dimensions are estimates only and may not be exact measurements.

15