



SOLD

DREAM HOME

AS GOOD AS NEW AND LESS THAN A YEAR OLD. A DISAPPOINTED VENDOR CAN NOT TAKE THIS HOME WITH HIM AND NEW OWNER WILL BE MORE THAN IMPRESSED. THE QUALITY OF FINISHES WILL IMPRESS THE FUSSIEST OF BUYERS. STUNNING VIEWS OVER PARKS AND GARDENS, IDEAL TO EXERCISE OR WALK THE DOG. OPEN KITCHEN MEALS FAMILY ROOM IS A FEATURE OF THE HOME WITH HIGH CEILINGS, HUGE WINDOWS AND DUCTED REVERSE CYCLE AIR- CONDITIONING KEEPS THE HOME THE RIGHT TEMPERATURE ALL YEAR ROUND. CLASSY KITCHEN WITH STONE BENCHTOP. AND THE BEST OF PRODUCTS. THREE LARGE BEDROOMS WITH THE MAIN HAVING WALK THROUGH ROBE TO BEAUTIFUL APPOINTED EN-SUITE WITH FLOOR TO CEILING TILING AND A 3 WAY BATHROOM FINISHED TO RESORT STYLE FINISHES. JUST OFF THE LIVING AREA IS A 4TH BEDROOM THAT COULD BE A 2ND LIVING AREA OR IDEAL AS AN OFFICE. ALFRESCO AREA HAS BEEN DESIGNED FOR SOCIAL LIVING, JUST A GREAT PLACE TO ENTERTAIN. EASY CARE GARDEN WITH AUTOMATIC WATERING SYSTEM. LOW MAINTENACE YARD, IDEAL FOR THE RETIREE DOUBLE GARAGE UNDER THE MAIN ROOF WITH INSIDE ACCESS MODERN COLOURS AND ON TREND FLOOR COVERINGS, COMPLEMENT THE HOME. INSPECTION WILL IMPRESS

RLA 269823

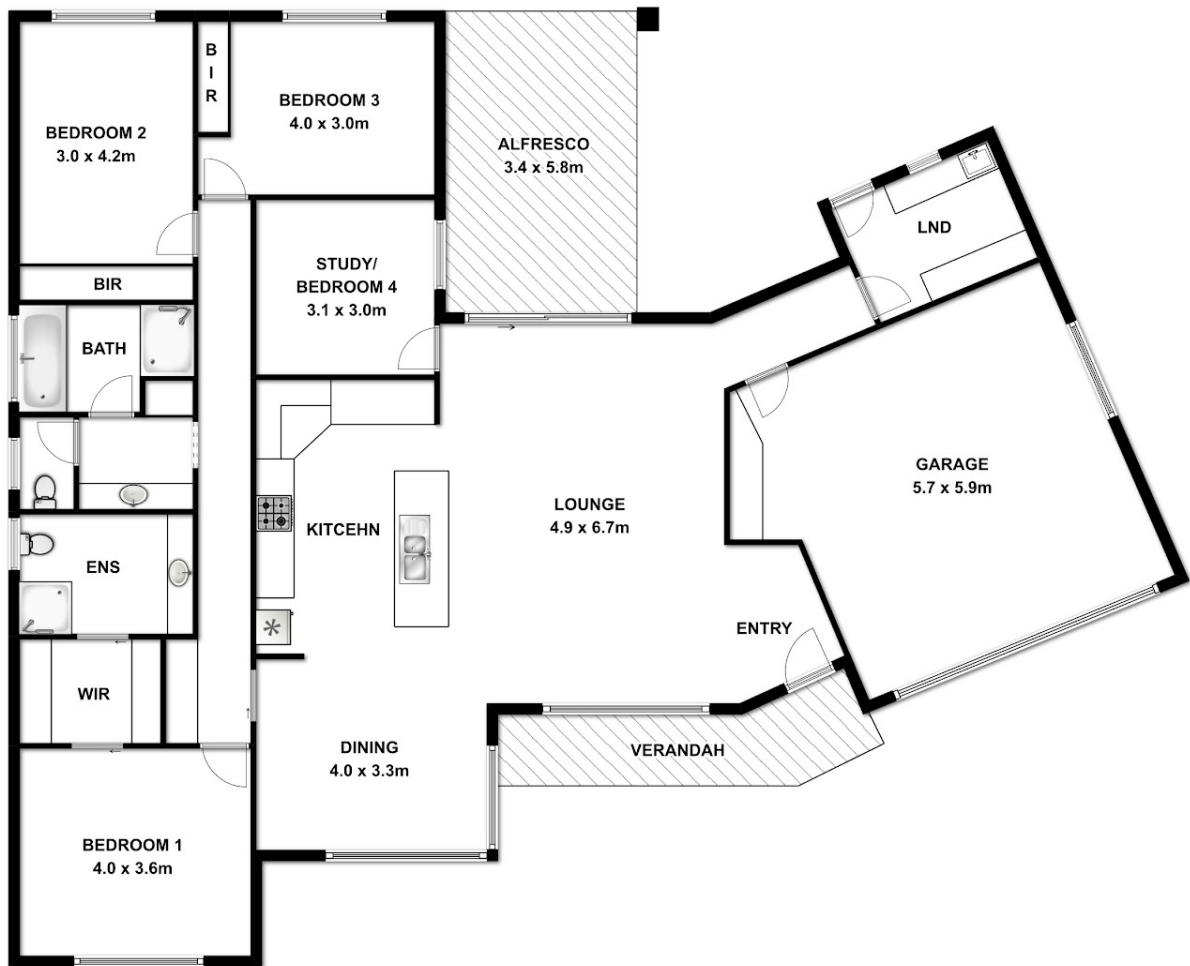
4 BED | 2 BATH | 2 CAR

PRICE:
\$450,000

OPEN FOR INSPECTION:
N/A



Peter Dempsey
0418854393
peterdempsey@atrealty.com.au
peterdempseyatrealty.com
RLA: 269823



This drawing is for illustration purpose only. All measurements are approximate only and information intended to be relied upon should be independently verified.

Disclaimer: Please note this floor plan is for marketing purposes and is to be used as a guide only. All dimensions are estimates only and may not be exact measurements.