

FOR SALE

24TH FLOOR - BEACH FRONT APARTMENT! PLAN FOR THE FUTURE AT TODAY'S PRICE

Commanding spectacular sweeping panoramic vistas of the Gold Coast hinterland and surrounds, this two bedroom, two bathroom South East facing apartment is situated on a high floor in the popular 'Imperial Surf' on The Esplanade surrounded by the excitement of Surfers Paradise.

The resort is perfectly located, stroll across the road to the patrolled Surfers Paradise golden sands beach, laze in the sun or surf in the brilliant blue surf. Later head out to Cavill Mall for coffee or lunch followed by kicking up your heels as the bustling night entertainment scene comes alive with great restaurants, bars with live music, and nightclubs to visit.

The apartment offers:

- Large master bedroom with built-ins robes and ensuite
- Second bedroom
- Main bathroom with bath & shower
- Air conditioning
- Large balcony commanding views to Coolangatta, Surfers Paradise and the Hinterland
- Open plan dining and living area with 180 deg view south east & south west
- Kitchen
- Broadband internet access
- Internal laundry
- Approximately 122 sqm
- One secure basement parking
- There is also the opportunity to update and add your own touches.

Permanent rental appraisal: \$26,000 - \$28,600 per year = \$500 - \$550 per week. The property is currently rented for \$500 per week with a tenant in place until May 2021. Or, later if you wish to place the apartment as a holiday rental this opportunity is also available.

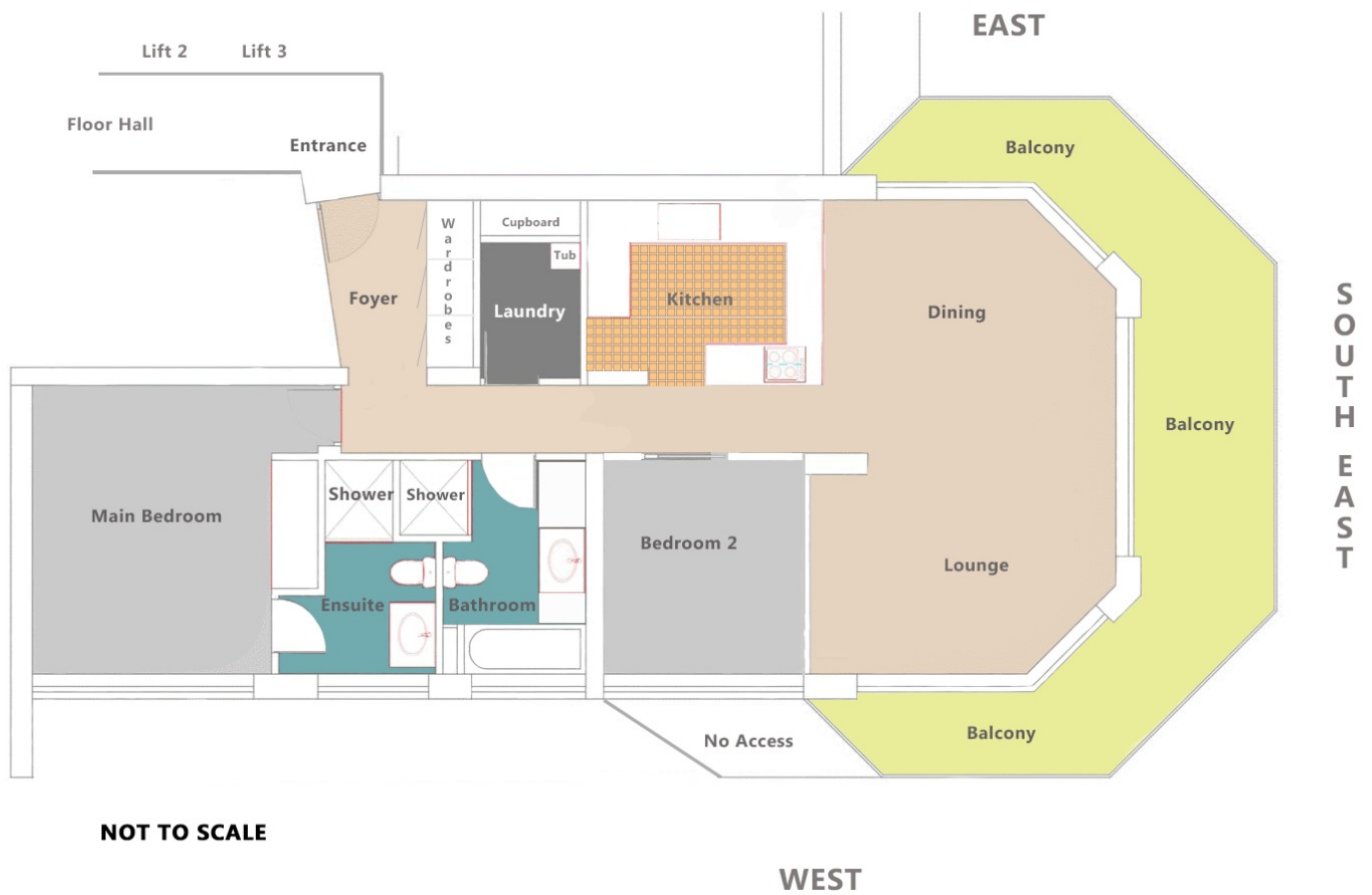
2 BED | 2 BATH | 1 CAR

PRICE:
\$567,000

OPEN FOR INSPECTION:
N/A



Lynne Wenban
0409008272
lynnewenban@atrealty.com.au
www.atrealty.com.au



Disclaimer: Please note this floor plan is for marketing purposes and is to be used as a guide only. All dimensions are estimates only and may not be exact measurements.