



SOLD

STUNNING APARTMENT WITH PANORAMIC VIEWS!

If you are looking for an apartment that ticks all the boxes then look no further!

This spacious 135m2 apartment is located on the top level of the complex, providing panoramic views over the surrounding suburbs. Villa Olimpia is a boutique complex of 8 apartments, located only a short stroll to Clayfield train Station and the popular Clayfield markets.

The apartment takes up the entire back section of the top level and is set back from the units underneath, meaning privacy is assured. The extra-large 26m2 covered balcony is located directly off the combined living and dining areas, making it the perfect extension to the already spacious living area. If you love to watch the sunset then this is the property for you!

If you love to cook then you will love the kitchen in this apartment as it is open plan and allows you to either watch the tv, kids or take in the view as you prepare food. For added convenience a door has been added for direct access from the kitchen to the balcony.

The oversized master bedroom has its own private walk in wardrobe and spacious shower in the en suite. For added privacy bedrooms 2 & 3 are located away from the master bedroom.

- Convenient lift located in the complex
- Daiken Air Conditioning to living area and all 3 bedrooms
- Bosch induction cooktop, oven & dishwasher
- Stiebel Eltron Instantaneous hot water system
- Side by side double carparks in secure parking
- Intercom system located at front entrance for added security
- Laundry area has a 3rd toilet and sink added for convenience
- Foxtel and NBN to the apartment
- Body Corporate fees \$685.50 per quarter
- Rates \$ 415.96 per quarter

3 BED | 2 BATH | 2 CAR

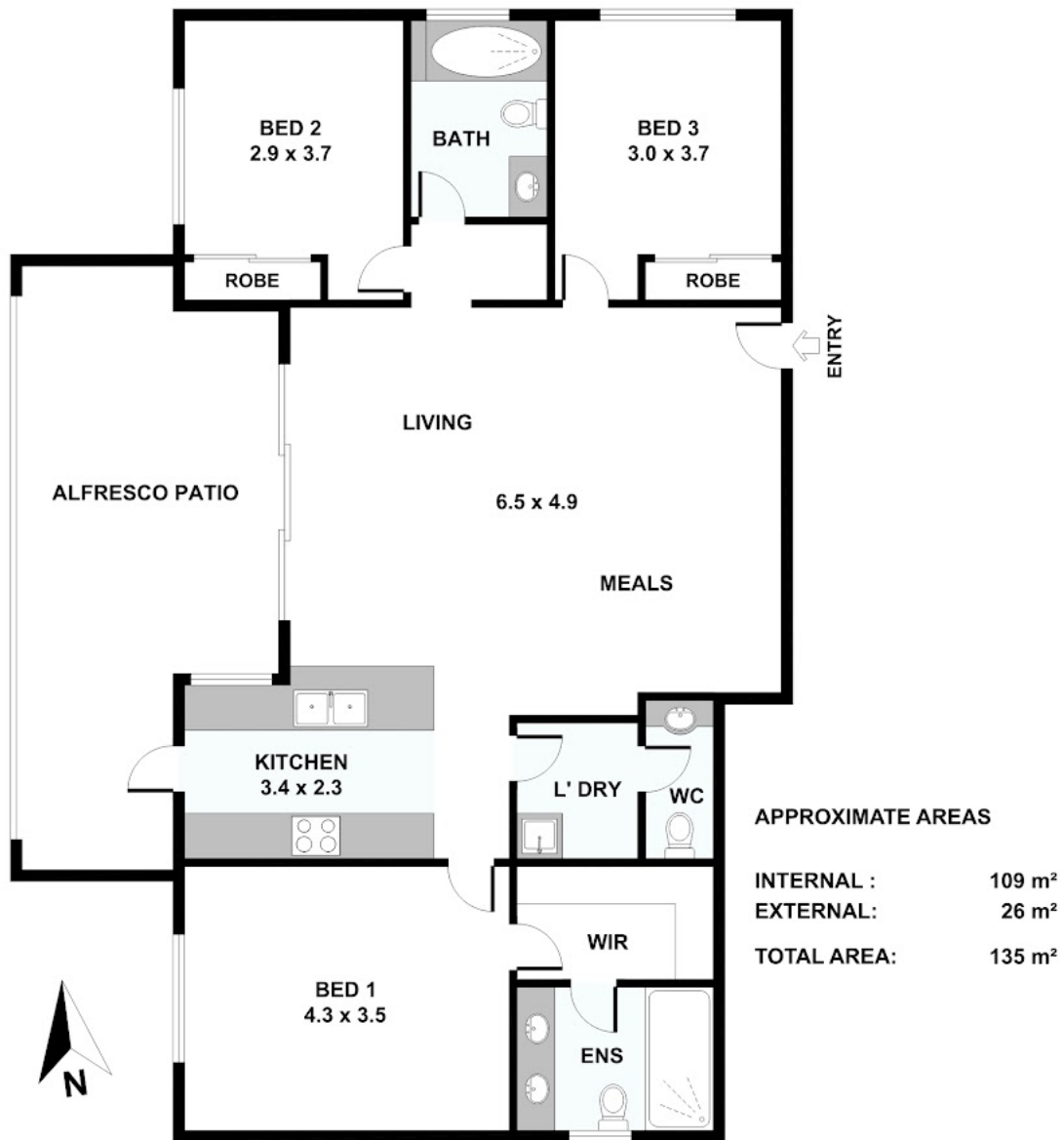
PRICE:
\$690,000

OPEN FOR INSPECTION:
N/A



Michael Stewart
0416448213
michaelstewart@atrealty.com.au
michaelstewartproperties.com.au

8/9 Wolseley Street, Clayfield



Disclaimer: Please note this floor plan is for marketing purposes and is to be used as a guide only. All dimensions are estimates only and may not be exact measurements.