



SOLD

TRUE FAMILY LIVING AT IT'S FINEST!

This double-storey residence, located in the new and popular Jubilee estate, provides a spacious and modern home perfect for any lifestyle. Being only recently built (2 years old) means the facilities are designed for a contemporary environment and provide a wealth of inclusions.

The features in this home are built with practicality in mind. All five bedrooms in the home are accompanied by a walk-in wardrobe, with two rooms containing ensuites (one upstairs and one downstairs). The kitchen contains a large walk in pantry and plenty of cupboards for storage, a stone kitchen bench-top, stainless steel appliances including a 5-burner gas cook-top, an oven and dishwasher. In addition to this, the front contains a space that can be utilised as an office/study, perfect for young families with children at school or adults who work from home. A focal point of this home is the spacious backyard with an alfresco extending out from the family room, perfect for indoor-outdoor entertainment in the warmer months. Ducted heating throughout the house, evaporative cooling throughout the top floor and a split system downstairs ensures your comfort through the seasons.

With close access to the recently refurbished Manor Lakes Shopping centre, Jubilee's Club One Aquatic centre (resident only swimming access), current and future government, independent and Catholic schools and public transport make the area highly desirable. Jubilee also provides close access to Werribee plaza, Werribee Zoo, Princes Freeway (M1) and a approximately 35 min drive to Melbourne CBD. This area contains exciting potential with the planned Jubilee Business Park being designated as a new employment hub for the West.

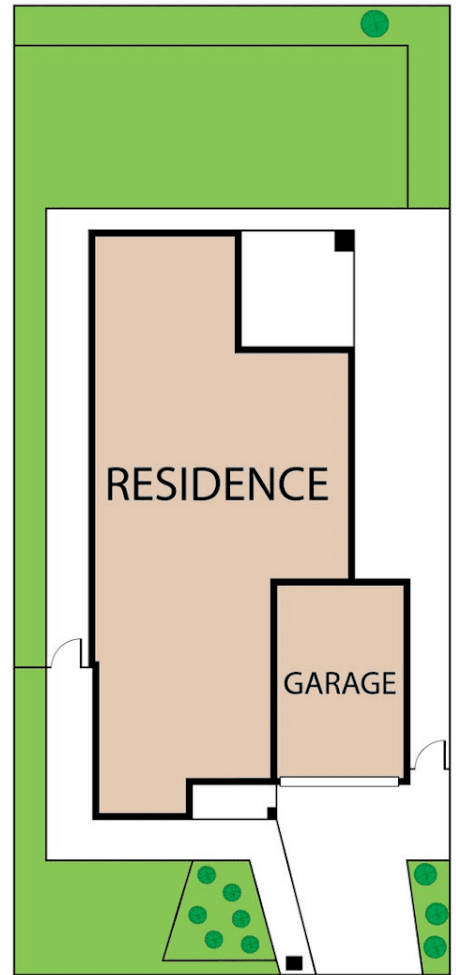
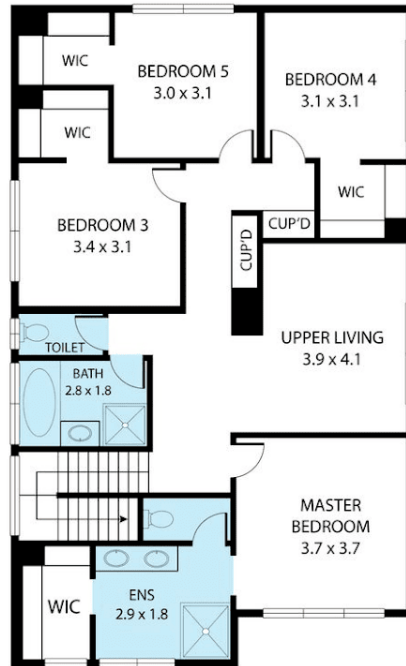
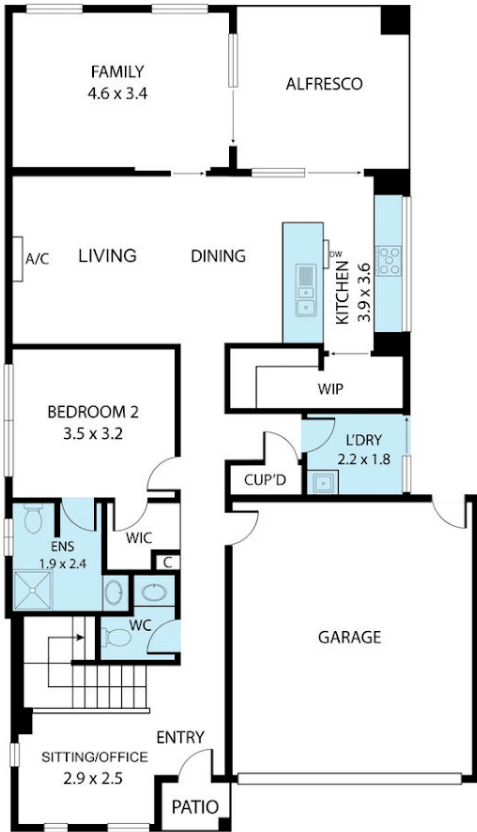
5 BED | 3 BATH | 4 CAR

PRICE:
\$680,000

OPEN FOR INSPECTION:
N/A



Joseph Hanna
0423966320
joseph@atrealty.com.au
www.atrealty.com.au



2 Westvale Way, Wyndham Vale 3024

TOTAL APPROX. FLOOR AREA 213 SQ.M

Whilst every attempt has been made to ensure the accuracy of the floor plan contained here, measurements of doors, windows, rooms and any other items are approximate and no responsibility is taken for any error, omission, or misstatement. This plan is for illustrative purposes only and should be used as such by any prospective purchaser.

Disclaimer: Please note this floor plan is for marketing purposes and is to be used as a guide only. All dimensions are estimates only and may not be exact measurements.