



SOLD

BALDIVIS BEAUTY!

+++++SOLD IN 2 OPENS BY NANCY BIRD !!! +++++++

Nancy Bird is proud to present this beautifully presented modern chic "AS NEW" 4 Bedroom 2 Bathroom, 2 driveways, 4 Car storage or lock up side access for that caravan boat or Ute. This property is a Beauty and has too many features to list, like light & bright living areas, fresh modern neutral décor, big bedrooms, Large Theatre room, Huge Plan Living with high ceilings, Spacious kitchen with Stone benchtops and quality Stainless steel appliances, Split system Reverse cycle Air conditioning in EVERY Living Area and all 4 Bedrooms, wide stylish Skirting Boards throughout, Gorgeous Alfresco Area plus low maintenance gardens with room for a pool plus so much more !

Quality built by Celebration Homes in 2013 with pristine "AS NEW" presentation, this Gorgeous family home is situated in the prestigious Baldivis Quarter, a quiet family orientated pocket of Baldivis surrounded by well kept properties and pretty parks, minutes drive to a variety of local shops, cafes and numerous Primary and Secondary schools with easy freeway access to Perth CBD.

This property is a "MUST SEE" as the fussiest of buyers will be impressed, with nothing to do and just move in and enjoy!

Call Nancy Bird anytime to register your interest & book your viewing ! BE QUICK !...as first who views will buy ! As this will impress even the most fussiest of Buyers! Call Nancy Bird on 041 555 8594

Features include :

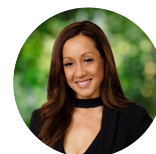
-Beautifully presented and finished with stylish fittings and fixtures like Modern fresh new paint throughout, neutral décor, wide skirting boards throughout, white shutters and white wooden blinds, downlighting and high ceilings

-Statement separate tiled entrance hallway with downlighting, finished stylishly with wide skirting boards and direct garage access

4 BED | 2 BATH | 4 CAR

PRICE:
\$450,000

OPEN FOR INSPECTION:
N/A



Nancy Bird
0415558594
nancybird@atrealty.com.au
www.atrealty.com.au



155 Smirk Road, Baldvis

HOUSE INTERNAL - 155m²
 GARAGE - 31m²
 PORCH - 2m²
 ALFRESCO - 15m²
 TOTAL AREA - 203m²
 LAND SIZE - 433m²



PLAN IS APPROXIMATE AND REPRESENTATIONAL ONLY

WWW.TATEFLOORPLANS.COM.AU

Disclaimer: Please note this floor plan is for marketing purposes and is to be used as a guide only. All dimensions are estimates only and may not be exact measurements.