



SOLD

GREAT FAMILY HOME OR INVESTMENT OPPORTUNITY.

Unassuming from the front, this home has a beautiful feel from the moment you step inside, with high ceilings and an easy flow design. . .

The bedrooms are all generous in size and the open plan living, kitchen and dining flow out onto the spacious back deck, creating another room for entertaining. Large windows bring the outside in, drawing in light and the timber look laminate flooring and neutral tones result in a home that is gentle and natural.

This home blends seamlessly into your own little rainforest canopy and has been positioned perfectly to capture those cool summer breezes whilst ensuring privacy.

The new owner will feel each day living here is an escape from the outside world. This well designed plan ensures there is no wasted space and there is plenty of storage throughout. There is nothing to do but move in and enjoy the sounds of nature, entertain off the back deck or tinker around your garden.

Internal

- 4 Bedrooms , Main with walk in robe, 2 with built ins.
- Ensuite
- Open plan Living/Kitchen/Dining
- High ceilings
- Secure mesh screens on front and side doors.
- Spacious Kitchen with plenty of drawers (19 to be exact)
- Electric oven and stove top
- Provision for a dishwasher
- Main bathroom
- Timber look laminate flooring throughout.
- Reverse cycle air con
- Stainless steel ceiling fans throughout Living, Dining and Bedrooms
- Large deck partially covered
- Large laundry
- Spacious single lock up garage with access to back deck

External

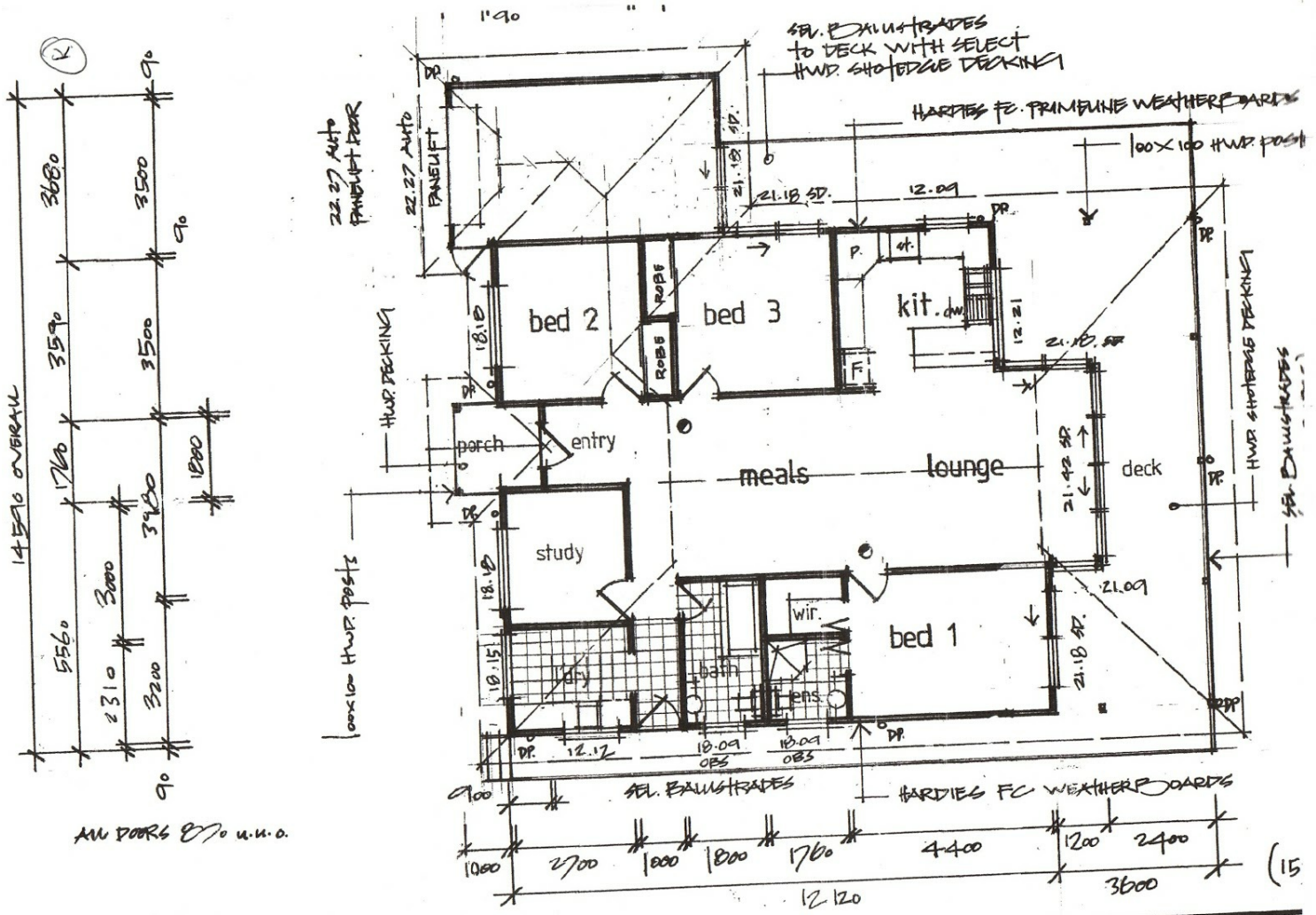
4 BED | 2 BATH | 1 CAR

PRICE:
\$550,000

OPEN FOR INSPECTION:
N/A



Karin Smith
0403012639
 karin.smith@atrealty.com.au
www.atrealty.com.au



Disclaimer: Please note this floor plan is for marketing purposes and is to be used as a guide only. All dimensions are estimates only and may not be exact measurements.