



SOLD

BE THE PROUD OWNERS OF THIS FABULOUS HOME

Astute buyers will love it. Owned by the same family for 30 years, the home is beautifully presented, affordable and ready to move in and enjoy. Proudly situated on an elevated block, with stunning views to the Darling Ranges, the property is in the hub of an exciting major shopping centre re-development at Kardinya. Boasting Stylish modern living with a light, bright and breezy ambience, you will love the relaxed lifestyle of this superb location.

There is plenty of off-street parking on this large block with a wide gated frontage plus extra room for a boat or a caravan. The back garden is secure for children and pets.

Will currently suit a smaller family, couples, first home buyers and the shrewd investor but there is so much opportunity for this property to become a substantial family home also.

Easy access to Perth CBD, Fremantle, major shops, medical and transport services.

DON'T MISS OUT – WILL NOT LAST LONG!

Features:

- Queen sized main bedroom with walk in robe, new bathroom
- Bedrooms two and three have wall to wall carpet and built in robes
- Two separate elegant and spacious open plan living areas
- Freshly painted throughout with new carpet and drapes
- Extensively renovated kitchen with abundant storage
- New five burner gas cooktop and electric wall oven
- Reverse cycle air conditioner in the family room
- Economical gas hot water - modern LED lighting
- Cosy wood heater for extra heating in family room
- Designated wood shed plus large garden shed
- Double gated carport with extra parking
- Substantially paved patio and courtyard
- Low maintenance gardens with automatic reticulation
- Constructed from brick and tile
- Built: 1988
- Land size: 700m²
- City of Melville Shire rates: \$1752.83 .00
- Current Water Rates: \$1445.20 approx.

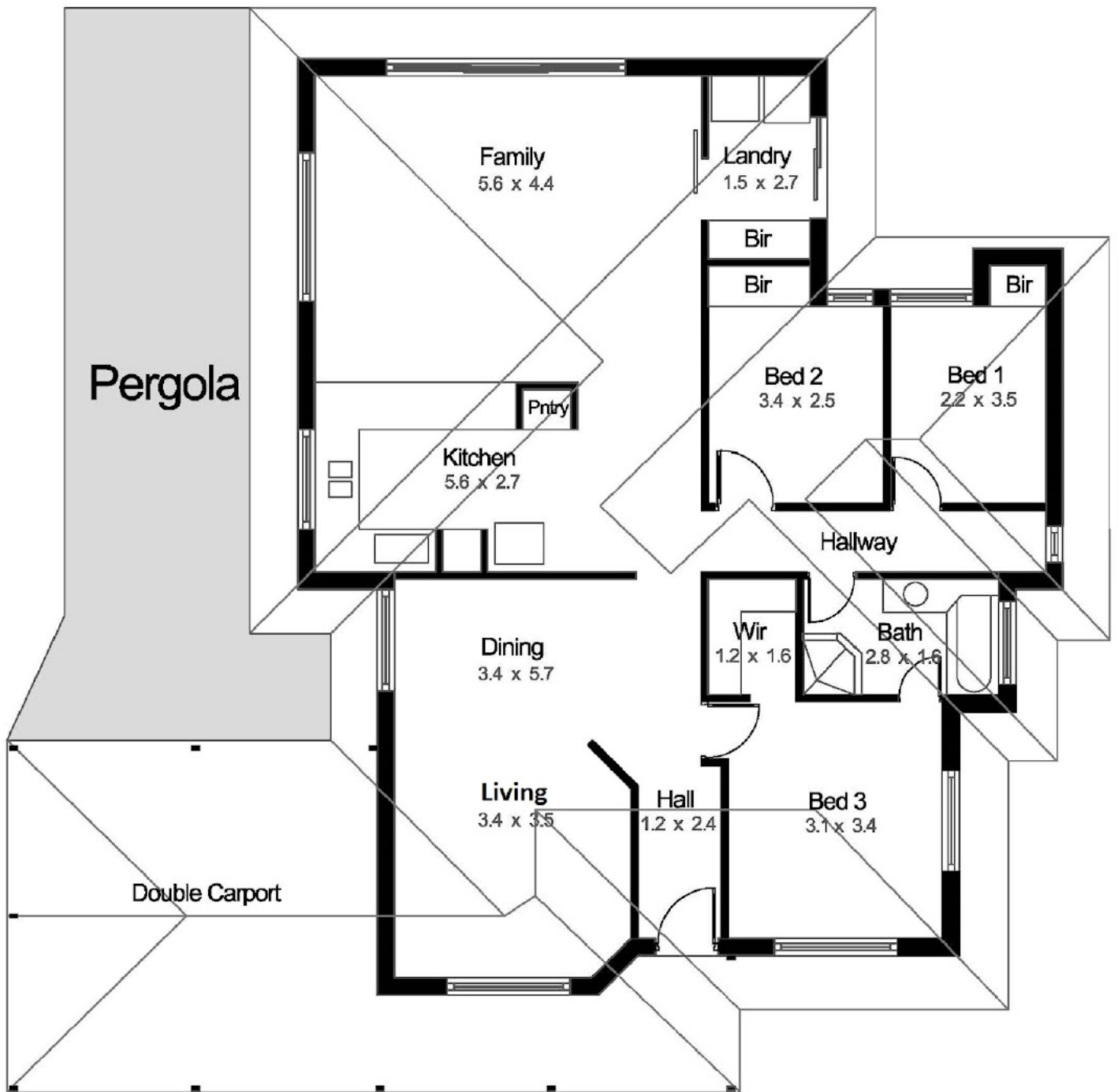
3 BED | 1 BATH | 2 CAR

PRICE:
\$615,000

OPEN FOR INSPECTION:
N/A



Helen Richardson
0417262788
helen@atrealty.com.au
www.atrealty.com.au



61 Garling Str Kardinya 6163

Disclaimer: Please note this floor plan is for marketing purposes and is to be used as a guide only. All dimensions are estimates only and may not be exact measurements.

Measurements are approximate, and no warranty is given to the accuracy thereof. Drawn for illustration purposes only.