



SOLD

CURRENT BID \$680K - 1 QUALIFIED BIDDER

CURRENT BID \$680,000 - 1 QUALIFIED BIDDERS. The Openn Negotiation is underway (online auction with flexible terms for qualified buyers) and the property can sell as early as tomorrow. Contact the Agent immediately to become qualified and avoid disappointment.

Have you been searching for the perfect coastal home? Don't let this immaculate property get away! Stunning views and vistas will be yours forever, while you enjoy the property's exceptional location in Venus Bay.

This extremely well constructed family home offers up 256sqm of space on it's elevated low maintenance block of 574sqm. Great design elements are everywhere you look, and we think you'll love the extra height and enormous garage and work shop that forms the entire ground floor of the property with tons of room to store a boat and caravan securely, not to mention all the other toys you'll be shopping for your new coastal lifestyle!

The practical floor plan has been designed to maximize those spectacular views! If you are a keen photographer, you could create some amazing work here without setting foot off of the wrap around timber decked balcony. Front and rear decks provide for plenty of entertaining space and you'll enjoy a large open plan living and dining area, linked to the well designed kitchen with tons of storage, pantry and some clever design touches.

The owners have maintained this property to an extremely high standard that really has to be seen to be appreciated - early inspection is a must!

For sale by Openn Negotiation (flexible conditions online auction). The Openn Negotiation is under way and the property can sell at any time. Contact the sales agent immediately to become qualified and avoid disappointment. Open to all buyers, including finance, subject to seller approval.

3 BED | 2 BATH | 2 CAR

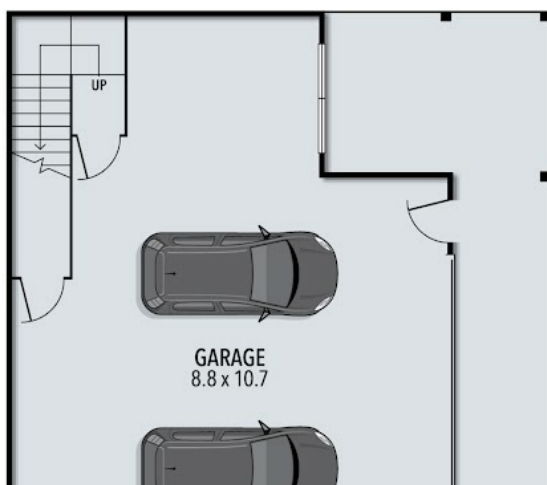
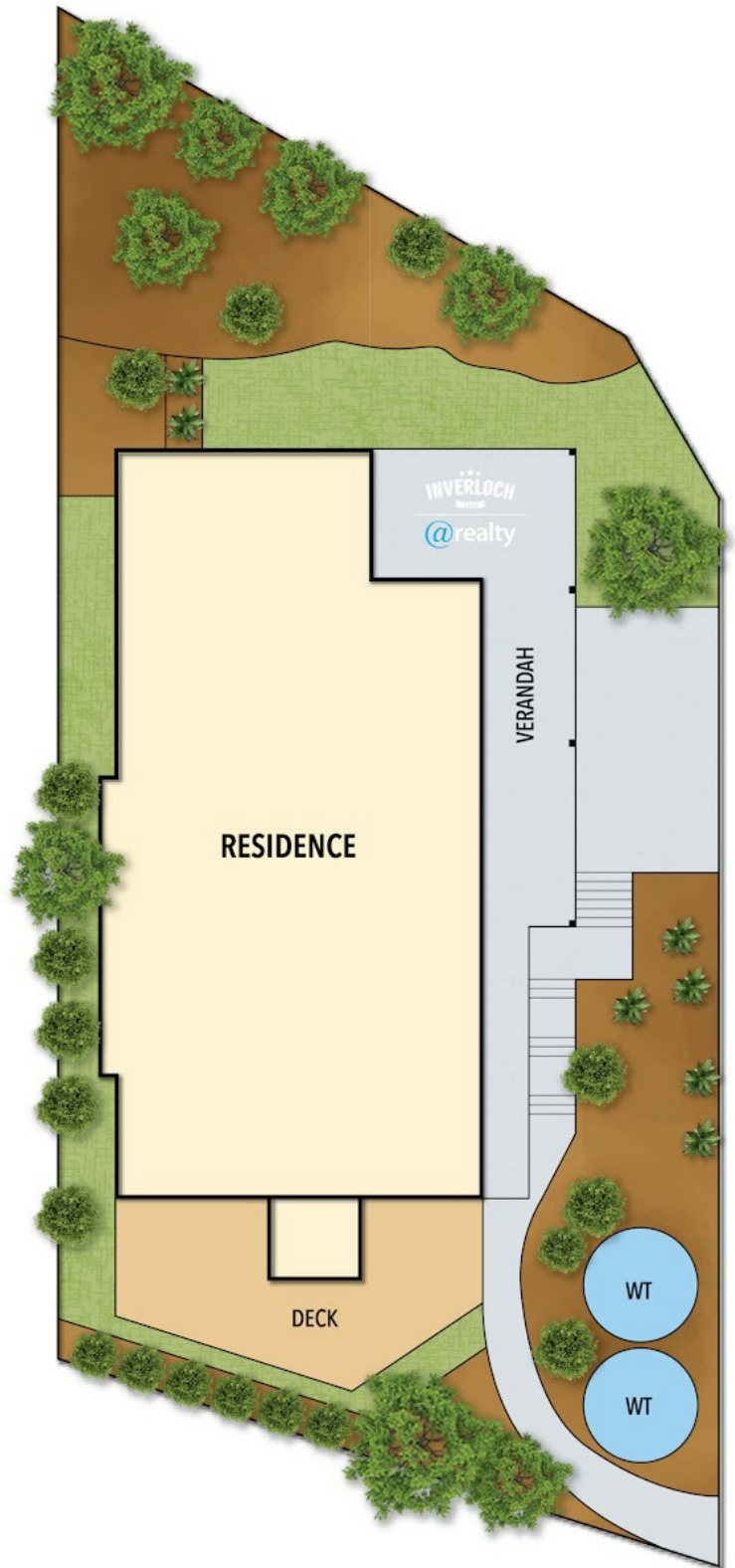
PRICE:
\$690,000

OPEN FOR INSPECTION:
N/A



Leo Edwards
0472523445
leo@atrealty.com.au
www.atrealty.com.au

157 LEES ROAD VENUS BAY VIC



Disclaimer: Please note this floor plan is for marketing purposes and is to be used as a guide only. All dimensions are estimates only and may not be exact measurements.

GROUND FLOOR

Leo Edwards
0472523445
leo@atrealty.com.au
www.atrealty.com.au

THE ABOVE PLAN IS AN ARTIST'S IMPRESSION ONLY, IT INCLUDES ELEMENTS THAT ARE FOR DISPLAY PURPOSES ONLY AND MAY NOT BE TO SCALE. LANDSCAPING SHOWN IS INDICATIVE ONLY. DIMENSIONS ARE APPROXIMATE.

@realty