

37 CHIPPEWA CIRCUIT, MUDGEERABA, QLD, 4213



SOLD

SOLD

Set privately behind a mature hedge and easy-care gardens that are bordered by a dry-stone wall, you'll find this beautifully presented 4 bedrooms, 2 bathroom home on a generous 806m² block.

Tiled living and dining areas flow seamlessly from the kitchen at the heart of the home out to the covered entertaining deck. The family-friendly backyard is fully fenced, has side access and a large, level grassed area with room for a pool. Parking is secure with a garage under the main roof and plenty of space for additional parking on the front grass pad.

Well-maintained and with air conditioning, ceiling fans and built-in robes, this home is move-in ready. Conveniently situated in sought after Mudgeeraba, and only minutes from schools, shops and the M1, inspection is a must.

Be sure to check out the video and virtual tour for an even better idea of the home. Available inspection times are listed under "open homes".

Disclaimer:

In preparing this information we have used our best endeavours to ensure the information contained herein is true and accurate, but we accept no responsibility and disclaim all liability in respect to any errors, omissions, inaccuracies, or misstatements that may occur. Prospective purchasers should make their own enquiries to verify the information contained herein.

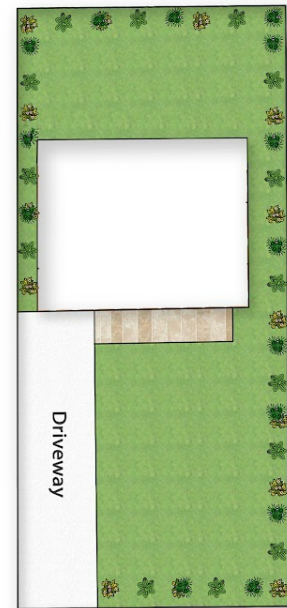
4 BED | 2 BATH | 1 CAR

PRICE:
\$620,000

OPEN FOR INSPECTION:
N/A



Tayla McCarthy
0466880138
tayla@atrealty.com.au
www.atrealty.com.au



37 Chippewa Circuit, Mudgeeraba
 INTERNAL FLOOR AREA 139m²
 EXTERNAL FLOOR AREA 51m²
 TOTAL AREA 190m²



Tayla McCarthy 0466 880 138

Whilst every attempt has been to ensure the accuracy of the floor plan contained here, measurements of doors, windows, rooms, and any other items are approximate and no responsibility is taken for any error, omission, or mis-statement. This is for illustrative purposes only and should be used as such by any prospective purchaser. www.picsandmortar.com

Disclaimer: Please note this floor plan is for marketing purposes and is to be used as a guide only. All dimensions are estimates only and may not be exact measurements.

Tayla McCarthy
 0466880138
 tayla@atrealty.com.au
www.atrealty.com.au

