



**SOLD**

## SIX MOUNTAIN VIEWS – NOOSA HINTERLAND GEM

Taking in views of six of the Sunshine Coast's iconic mountains, this spacious, contemporary home is perfectly positioned for absolute privacy, rural lifestyle and sustainable living.

Enjoy the meandering drive to the thoughtfully designed, pavilion-style home featuring large decks and ample indoor/ outdoor living spaces for enjoyable subtropical living.

The three-bedroom, three-bathroom home with professionally landscaped native gardens, are designed to capture the best of the Noosa Hinterland views and coastal breezes while remaining unobtrusively nestled into the highest point of the almost five-acre block.

Low maintenance and full enjoyment are the order of the day throughout. The home is unique by design and includes a sparkling in-ground pool, numerous areas for quiet enjoyment and spaces for large family gatherings.

The main floor open plan living is complemented by a large lower-level living space complete with cosy fireplace for the cooler winter evenings, dry bar and private deck.

The central designer kitchen features Caesar stone benchtops, gas cooktop and built-in conveniences. It is a delightful heart of the home providing the entertainment hub with its central location facing across the expansive living area, exterior decks, gardens, and views.

The home features three generous bedrooms with hinterland views, one of which provides possibilities of an office or studio or ideal guest accommodation. The multipurpose hallway cleverly combines laundry/storage and reading nook with no loss of access or utility.

The established gardens include plantings of native finger limes, Davidson plums and Tamarind which are in full production. The solar powered bore can produce 4000 litres per hour of crystal-clear water; enough to nourish the most dedicated gardeners!

Located just minutes to the thriving township of Cooran, with desirable access to major Highway, rail transport and both regional and international airport facilities .... enjoy a rural lifestyle with all the modern conveniences close by...culture, shopping world famous beaches and entertainment

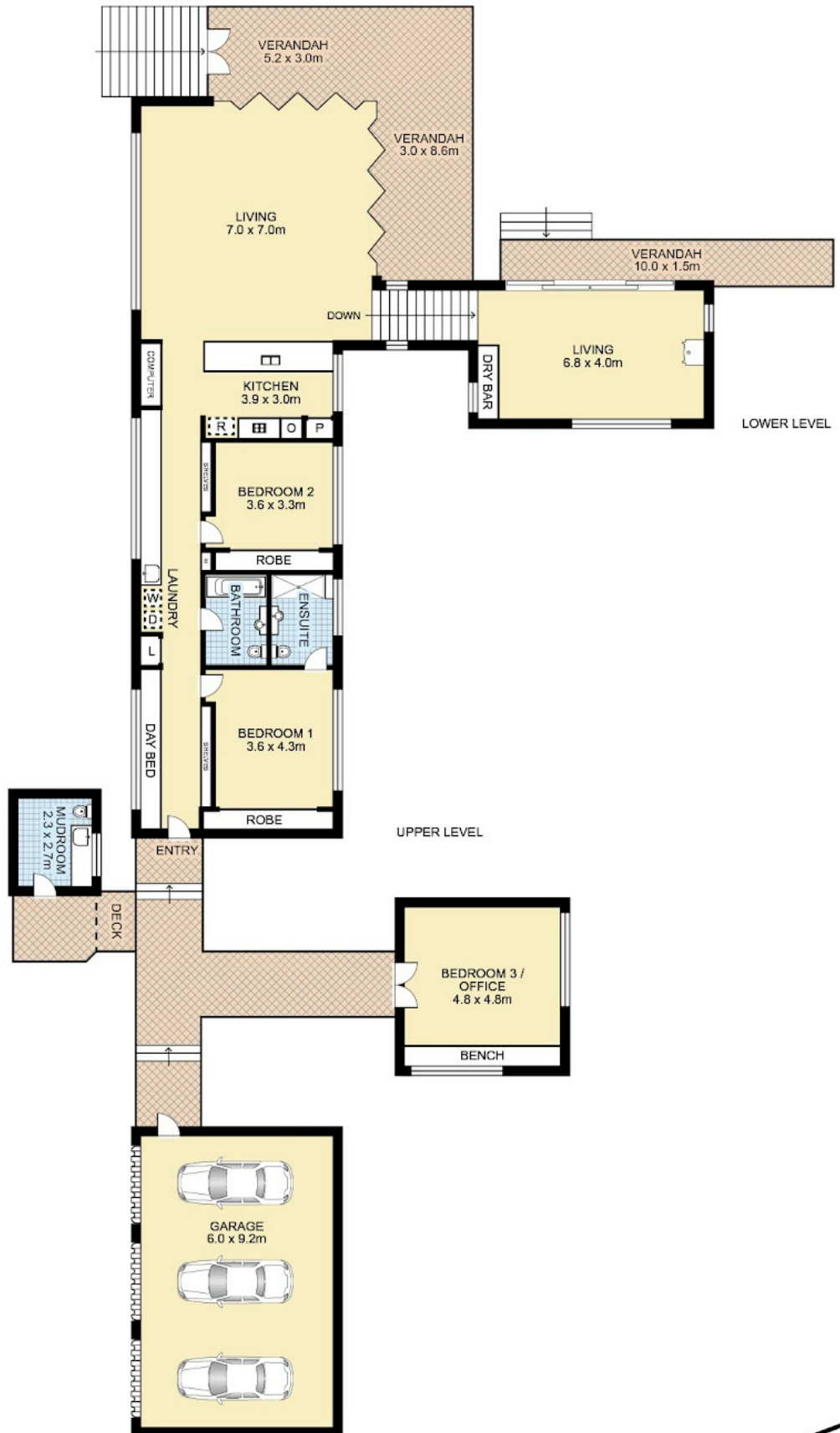
**3 BED | 3 BATH | 6 CAR**

**PRICE:**  
**\$1,130,000**

**OPEN FOR INSPECTION:**  
**N/A**



**Jim Ennis**  
**0402587298**  
jimennis@atrealty.com.au  
[www.atrealty.com.au](http://www.atrealty.com.au)



Disclaimer: Please note this floor plan is for marketing purposes and is to be used as a guide only. All dimensions are estimates only and may not be exact measurements.

Garage Area : 55.2m<sup>2</sup>

...warranties of any nature whatsoever are given or intended. Any person using this information should rely on their own enquiries. Floor Plans by SURROUNDPIX.

**Jim Ennis**  
 0402587298  
 jimennis@atrealty.com.au  
[www.atrealty.com.au](http://www.atrealty.com.au)

