



# Sold

4  | 2  | 2 

11 MCLAREN CLOSE, MURRAY BRIDGE, SA, 5253

ANSELL  
Real Estate



## STUNNING VIEWS & ROOM TO MOVE

Located among other quality homes and walking distance to the Avoca Dell river reserve this home is the perfect home for the growing family. Set on approximately 3,500m<sup>2</sup> of prime east side land the four bedroom home has stunning views down the river and boasts modern amenities and generously proportioned room sizes.

A large, decked entertaining area sits in the middle of the house and looks over the landscaped rear yard. A space sure to impress the discerning entertainer.

What we love about this property:

- Large home with generous room sizes
- Multiple living spaces
- Large allotment with rooms to move
- Modern, stylish and neutral
- Stunning views of the Murray River
- Heating and cooling
- Double garage with remote roller door
- Walking distance to Avoca Dell river reserve RLA 269823

PRICE:  
\$521,000




OPEN FOR INSPECTION:  
N/A

# Callum Ansell // 0468671665

callum@ansellrealestate.com.au // [www.ansellrealestate.com.au](http://www.ansellrealestate.com.au) // RLA 305012



# Sold

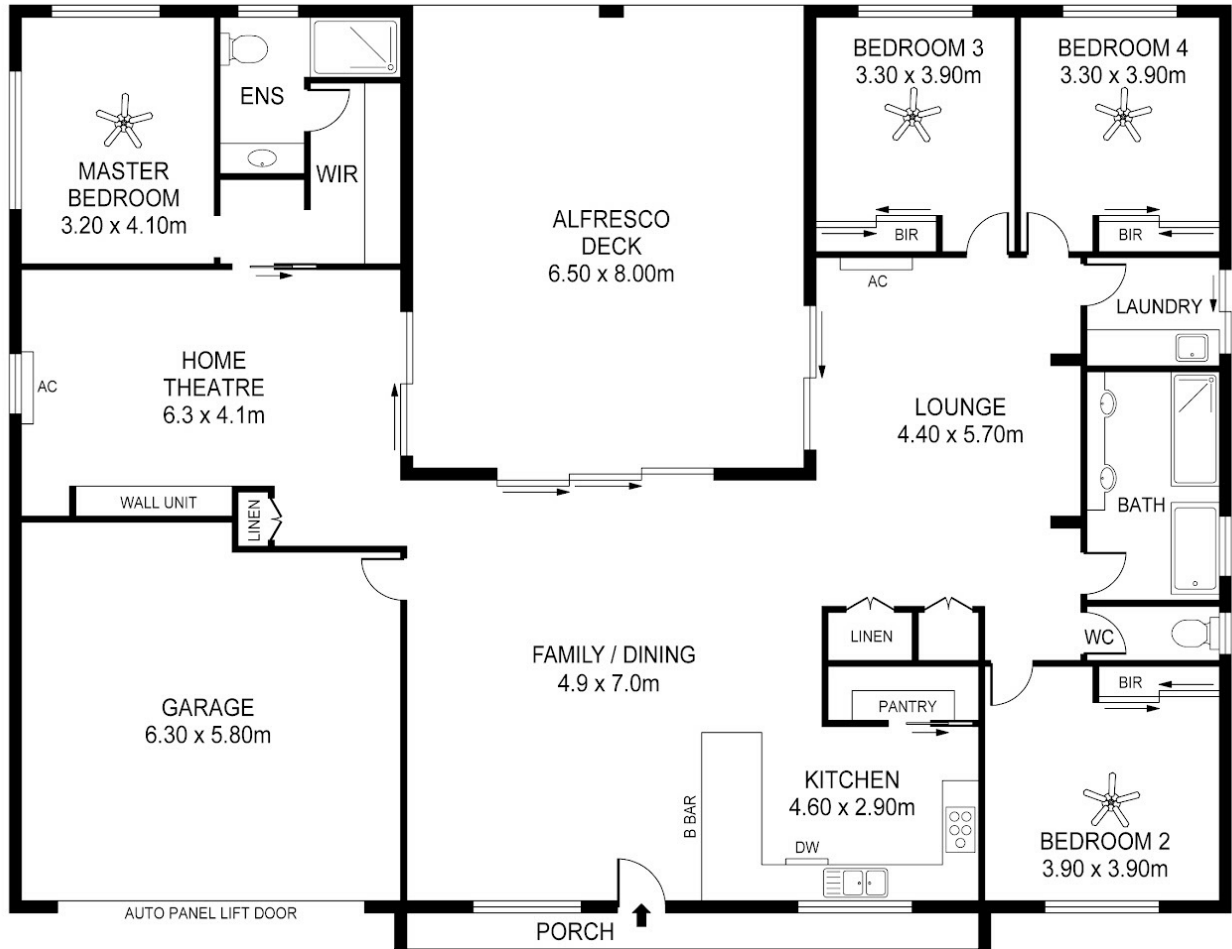
4  | 2  | 2 

# ANSELL

Real Estate



11 MCLAREN CLOSE, MURRAY BRIDGE, SA, 5253



#### APPROXIMATE AREAS

LIVING	200 Sq M
ALFRESCO DECK	52 Sq M
GARAGE	38 Sq M
PORCH	6 Sq M
TOTAL	296 Sq M

11 MCLAREN CLOSE, AVOCA DELL



## Callum Ansell // 0468671665

callum@ansellrealestate.com.au // [www.ansellrealestate.com.au](http://www.ansellrealestate.com.au) // RLA 305012