

SOLD

MODERN HOME IN POPULAR ESTATE!

This 5 year old home is situated in modern estate only minutes from all amenities and offers easy access to the Bruce Highway. The home offers 4 good sized bedrooms all with built in robes, ceiling fans, ensuite, open plan living area with air-conditioning. Complimented by a modern kitchen with plenty of cupboard space and dishwasher. The alfresco area extends your living space and is fabulous for outdoor entertaining. The yard is fully fenced and has side access. The Tenants take great pride in looking after this property and currently pay \$395.00 per week, they would be keen to stay.

Features include:

- Master bedroom with ensuite
- Spacious bedrooms with built in robes
- Modern kitchen with dishwasher, brand new oven & plenty of cupboard space
- Ceiling fans & air-conditioning
- Double remote garage
- Outdoor Undercover alfresco area
- Currently rented for \$395 per week
- Low maintenance block 465m²
- Built in 2015

Location:

- Catchment area for Burpengary SS & Burpengary State Secondary College
- Close to Parks and Playgrounds
- Minutes to Burpengary train station
- 5 minute drive to Burpengary Shops incl Kmart, Coles, Woollies Aldi and Banks
- 5 minutes to Bruce Highway

This Quality home is located minutes from Burpengary and Morayfield shopping centres, Schools and transport, and has easy Highway Access. If you're looking for a Modern spacious home, then this is the place for you! If you're looking for an Ideal Investment, then this is definitely the place for you!

Call Phill Healey to arrange your Private Inspection on 0414 452 244

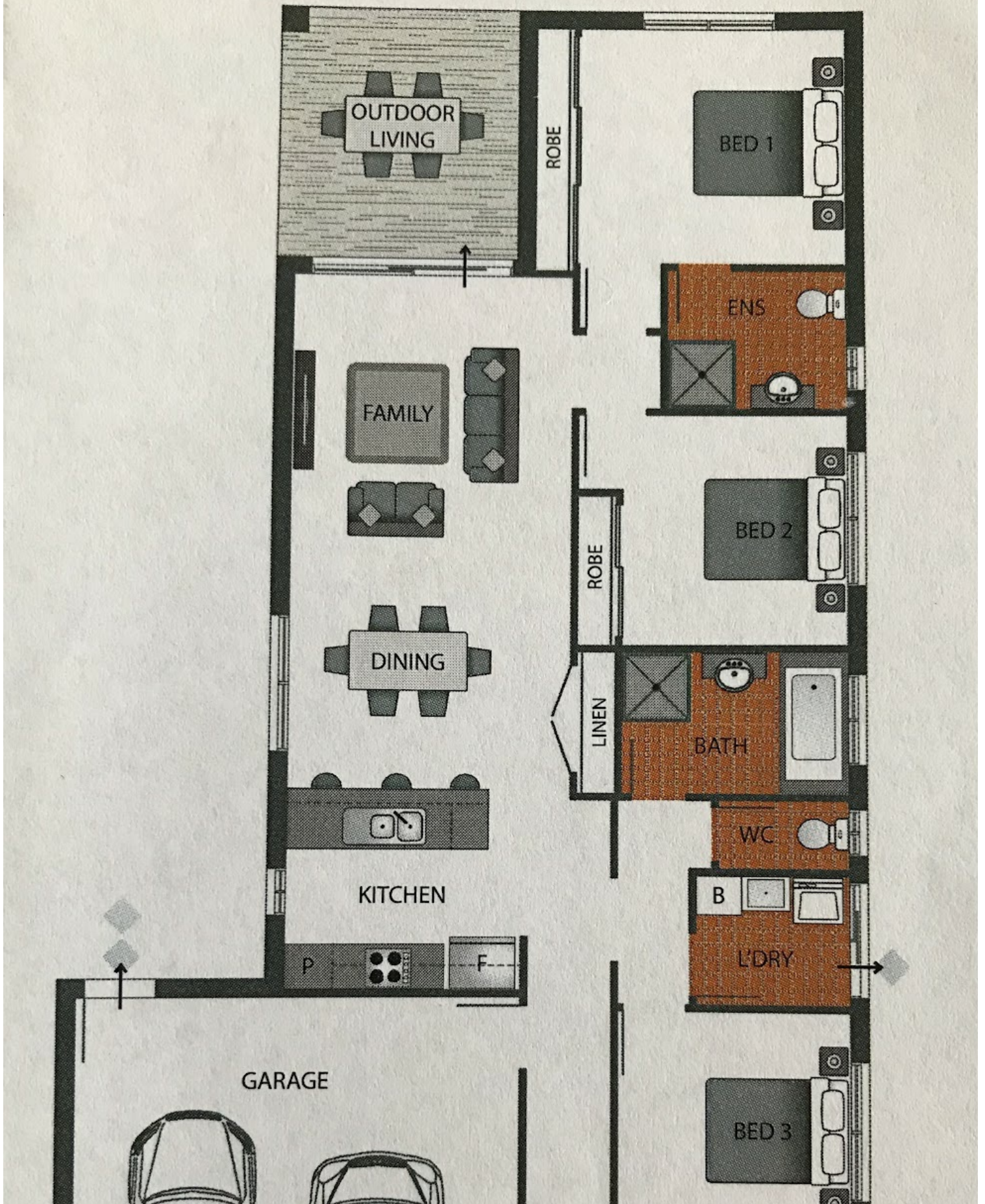
4 BED | 2 BATH | 2 CAR

PRICE:
\$445,000

OPEN FOR INSPECTION:
N/A



Phill Healey
0414452244
phill.healey@atrealty.com.au
www.atrealty.com.au



Disclaimer: Please note this floor plan is for marketing purposes and is to be used as a guide only. All dimensions are estimates only and may not be exact measurements.

