

**SOLD**

## LUXURY LIFESTYLE – PRIVATE VIEWS

This private and immaculate home is for the most discerning buyer.

Located at Emerald Lakes, The Cove, a high quality secure estate with 11kms of lakeside walks and beautiful pool by the lake with resident clubroom and gym.

Mostly owner occupied and highly sought after. Pet friendly.

Very spacious living and dining, 2 bedrooms plus flexiroom or study.

Living to large covered alfresco with leafy views.

High quality kitchen, stone benches, gas hob, water to the fridge and feature cabinetry.

Main bedroom with ensuite. Second queen bedroom with family bathroom, separate laundry.

Close to shopping and transport. Aldi, Woolies, and the markets. Take a walk or ride your bicycle to the Emerald Lakes markets every Thursday 3-7pm for fresh produce or a meal at one of the cafes or market stalls.

Two car parking, secure garage plus driveway parking. Extra parking in the estate.

Hard to find in this price range, excellent quality throughout, freshly painted and decorated, as new contemporary finishes.

Gas BBQ point in the alfresco, sandstone tiles, intercom, air conditioning.

Lovely heated pool, BBQ and resident entertaining area plus gym.

Secure for the relaxed lifestyle in this high quality estate.

**3 BED | 1 BATH | 1 CAR**

**PRICE:**  
\$435,000

**OPEN FOR INSPECTION:**  
N/A



**Colin Longton**  
**0412514131**  
colinlongton@atrealty.com.au  
[www.atrealty.com.au](http://www.atrealty.com.au)

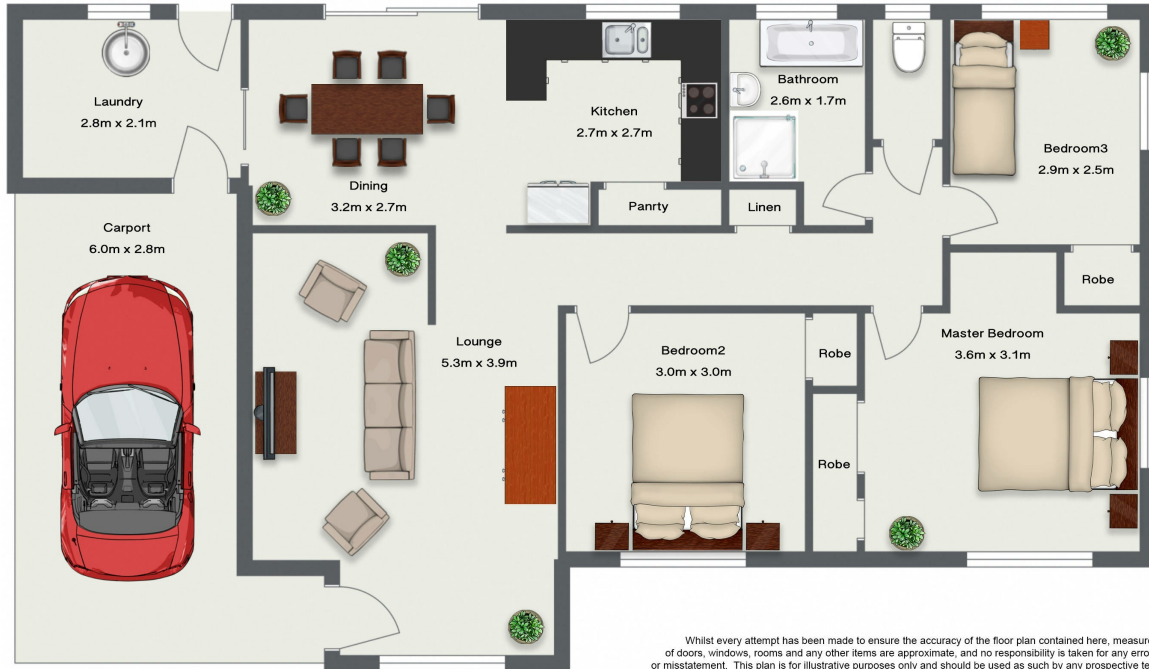
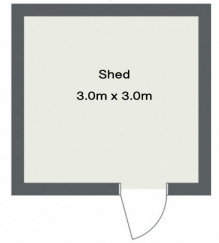
18 Augusta St, Crestmead

3 Bedrooms, 1 Bathroom, 1 Toilets, 1 Carport

Floor Space: 105m<sup>2</sup> Approx



(Not in position)



Whilst every attempt has been made to ensure the accuracy of the floor plan contained here, measurements of doors, windows, rooms and any other items are approximate, and no responsibility is taken for any error, omission, or misstatement. This plan is for illustrative purposes only and should be used as such by any prospective tenant or owner. The services, systems and appliances shown have not been tested and no guarantee as to their operability or efficiency can be given.

Disclaimer: Please note this floor plan is for marketing purposes and is to be used as a guide only. All dimensions are estimates only and may not be exact measurements.