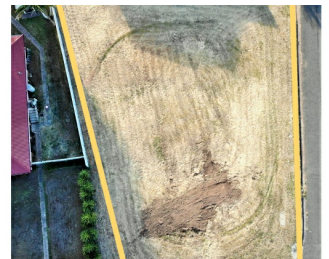


Sample
Duplex View
on two frontages



You could build a
duplex accessing
both frontages
like this

36.32 metres



26.67 metres



FOR SALE

BEST VALUE LAND IN SINGLETON

With new developments in the immediate vicinity, this is a great opportunity for an astute investor to own a level block with two street frontages in downtown Singleton. You can build one property, or build a set of duplexes and rent one or both out for guaranteed regular income!

- 702sqm level corner plot with access from two street frontages
- Town services in place
- Potential to build a single dwelling or duplexes (STCA)
- Only 600m to TAFE and popular food outlets
- Three minute drive to Singleton Square shopping centre
- Train station is only 1.3km's away

This is a smart investment opportunity as you can build a large 4 bedroom home with a rental return potential of \$450 per week or you can build two duplexes subject to Council approval and each one would return between \$360 - \$390 per week!

Get in touch today to find out more about this great development opportunity

Disclaimer

This information has come from the Vendor and we cannot guarantee the accuracy of the information provided. Purchasers should make every effort to conduct their own independent enquiries and investigations and satisfy themselves of all aspects of such information including without limitation, any income, rentals, dimensions, areas, zoning and permits related to this property

0 BED | 0 BATH | 0 CAR

PRICE:
\$138,500

OPEN FOR INSPECTION:
N/A



Alicia Vaughan
0406814596
alicia@atrealty.com.au
www.atrealty.com.au