



**SOLD**

## MODERN, STYLISH AND SPACIOUS FAMILY HOME

Local Agents Andrew Emms and Gerrie Bowden presents...

- \* Ultra-stylish and modern family home
- \* Four large bedrooms and two well-appointed bathrooms
- \* Designed to showcase glorious views to the North Pine River
- \* Just three years old with must-have features throughout
- \* Designer kitchen with high-end appliances and stone benchtops
- \* A separate lounge room plus a study nook
- \* Covered entertaining area and a fully fenced backyard
- \* Good-size 515sqm north-facing block with side access
- \* Moments from schools, shops and public transport links

Welcome to this sleek, stylish and spacious family home with all the modern conveniences you could ever wish for. Just three years old and beautifully presented, this is your chance to enjoy all the benefits of a near-new residence along with a prized family-friendly location.

The four-bedroom, two-bathroom layout is light-filled and large with multiple living spaces on offer. You will love to gather in the open-plan kitchen, dining and living area or move through to the separate carpeted lounge room.

Cooking is made easy thanks to the suite of stainless steel Beko European appliances along with the sweeping stone benchtops, glass backsplash, double sink and butler's pantry. From here, you can overlook the living and dining room nestled under a tall pitched ceiling or move outside to the covered entertaining area and child-friendly backyard.

At the end of the day, you will love to retire to the luxe master suite with a walk-in robe and a beautifully finished ensuite. The main bathroom has a separate bath and shower while the long list of extra features is extensive.

Craving more? There's also:

- \* A double garage with an automatic door

**4 BED | 2 BATH | 2 CAR**

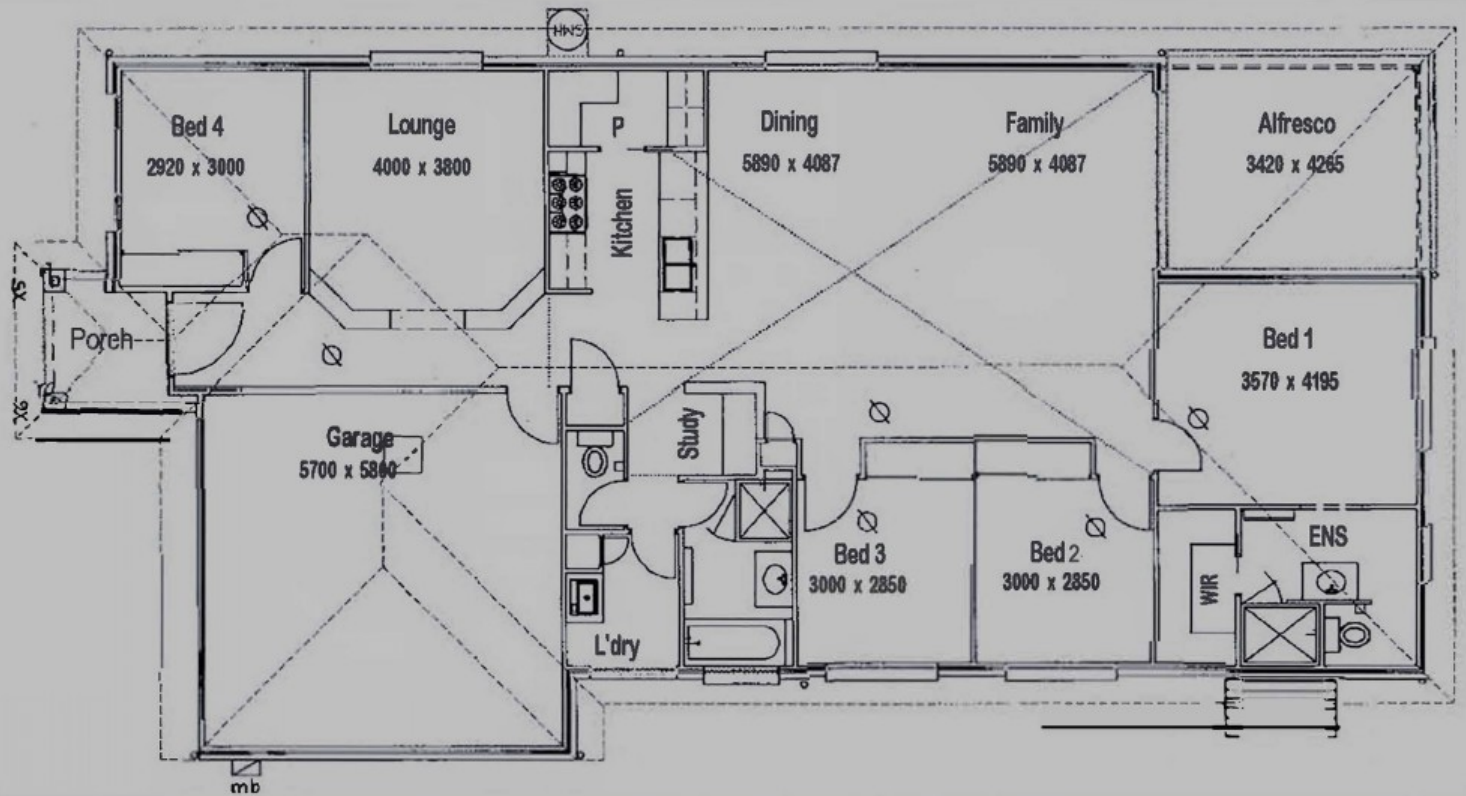
**PRICE:**  
\$595,000

**OPEN FOR INSPECTION:**  
N/A



**Andrew Emms**  
**0427734743**  
andrew.emms@atrealty.com.au  
[www.atrealty.com.au](http://www.atrealty.com.au)

# 9 Oxbow Crescent, Lawnton



Floor plan measurements are approximate and for illustration purposes only. Scale in metres.

@realty

Disclaimer: Please note this floor plan is for marketing purposes and is to be used as a guide only. All dimensions are estimates only and may not be exact measurements.